

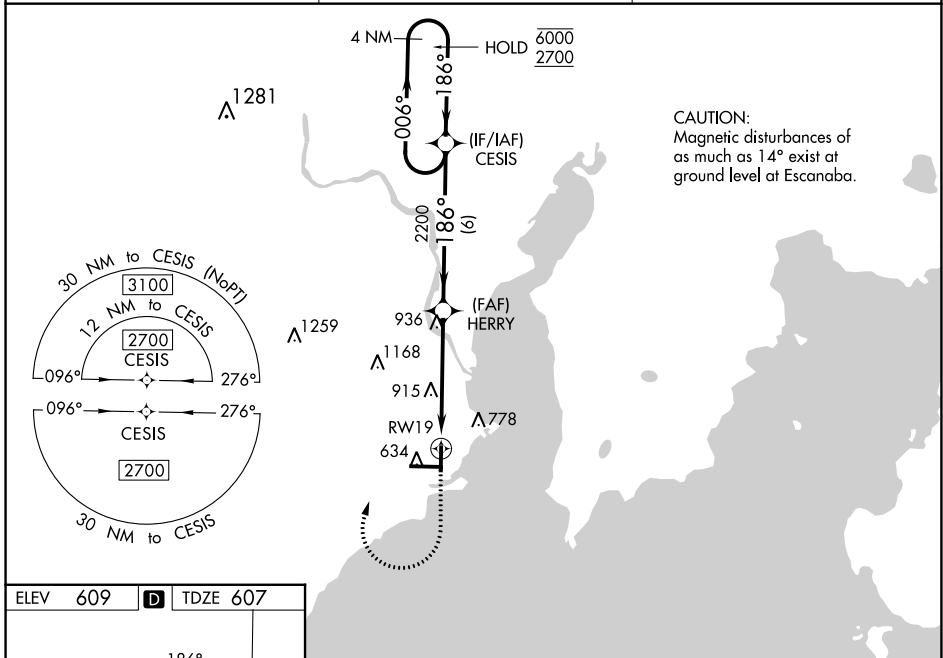
APP CRS	Rwy Idg	<b>5015</b>
<b>186°</b>	TDZE	<b>607</b>
	Apt Elev	<b>609</b>

# RNAV (GPS) RWY 19

DELTA COUNTY (E/SC)

RNP APCH - GPS.	MISSED APPROACH: Climb to 1100, then climbing right turn to 2700 direct CESIS and hold.
-----------------	--------------------------------------------------------------------------------------------

AWOS-3PT <b>121.425</b>	MINNEAPOLIS CENTER <b>127.65</b>	UNICOM <b>122.8</b> (CTAF) <b>0</b>
----------------------------	-------------------------------------	----------------------------------------

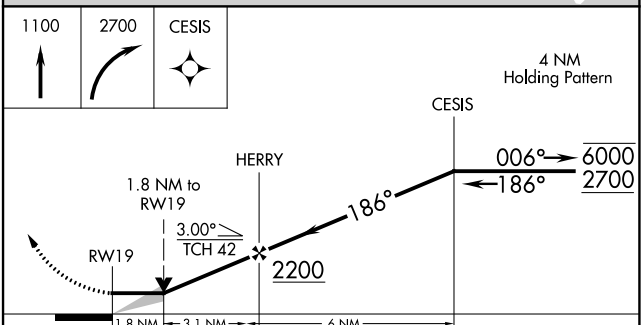
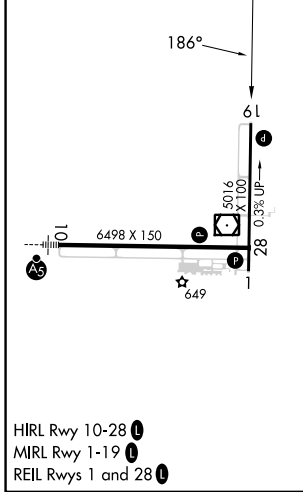


CAUTION:  
Magnetic disturbances of as much as 14° exist at ground level at Escanaba.

EC-1, 22 FEB 2024 to 21 MAR 2024

EC-1, 22 FEB 2024 to 21 MAR 2024

ELEV 609	<b>D</b>	TDZE 607
----------	----------	----------



CATEGORY	A	B	C	D
LNAV MDA	1220-1	613 (700-1)	1220-1 <sup>3</sup> / <sub>4</sub>	613 (700-1 <sup>3</sup> / <sub>4</sub> )
<b>C</b> CIRCLING	1220-1	611 (700-1)	1280-1 <sup>3</sup> / <sub>4</sub> 671 (700-1 <sup>3</sup> / <sub>4</sub> )	1480-2 <sup>3</sup> / <sub>4</sub> 871 (900-2 <sup>3</sup> / <sub>4</sub> )