

LOC I-FNF <b>110.1</b>	APP CRS <b>219°</b>	Rwy Idg 8001
		TDZE 31
		Apt Elev 33

# ILS Z or LOC Z RWY 22

ELLINGTON (EFD)

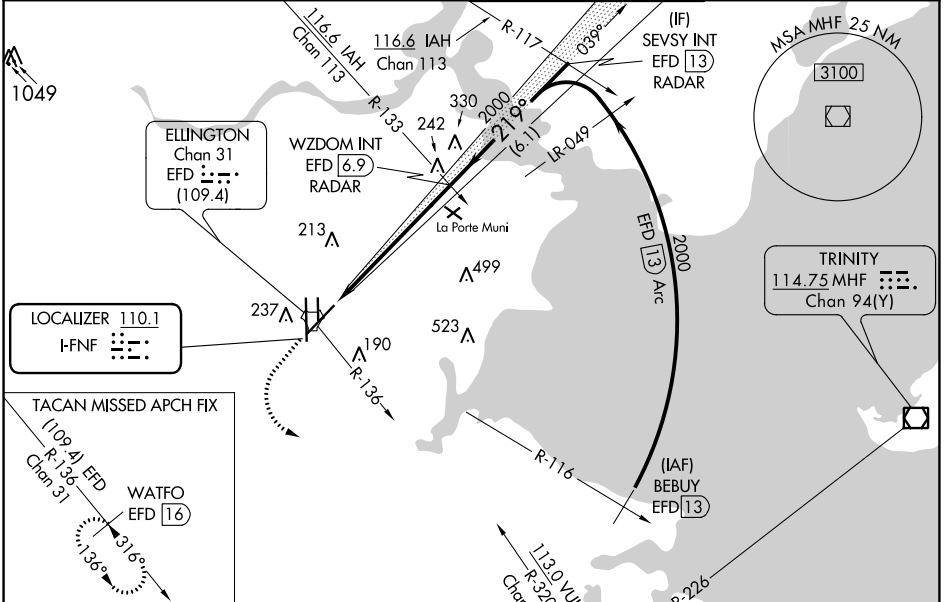
**RADAR required for procedure entry.**

**⚠ Circling NA west of Rwy 17R-35L. DME from EFD TACAN. Simultaneous reception of I-FNF and EFD DME required. For inop ALS, increase S-ILS 22 Cat E visibility to RVR 4000 and S-LOC 22 Cat E visibility to 1½ SM.**

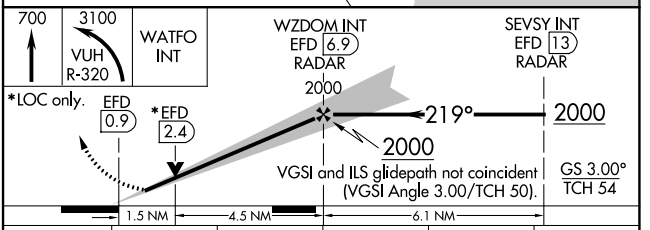
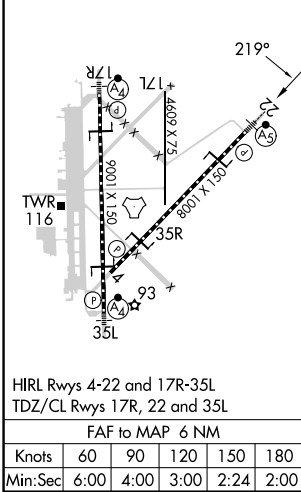
**MALSR**

**MISSED APPROACH:** Climb to 700 then climbing left turn to 3100 on VUH VOR/DME R-320 to WATFO INT/VUH 9.3 DME and hold. (TACAN aircraft climb to 700 then climbing left turn to 3100 on EFD TACAN R-136 to WATFO/EFD 16 DME and hold southeast, left turn, 316° inbound.)

ATIS <b>135.575 269.9</b>	HOUSTON APP CON <b>134.45 284.0</b>	ELLINGTON TOWER <b>126.05 253.5</b>	GND CON <b>121.6 275.8</b>
------------------------------	--	--	-------------------------------



ELEV 33	<b>D</b>	TDZE 31
---------	----------	---------



CATEGORY	A	B	C	D	E
S-ILS 22	231/18 200 (200-½)				
S-LOC 22	560/24	529 (600-½)	560/55	529 (600-1)	
<b>C</b> CIRCLING	560-1	527 (600-1)	580-1½ 547 (600-1½)	640-2 607 (700-2)	700-2¼ 667 (700-2¼)

SC-5, 22 FEB 2024 to 21 MAR 2024

SC-5, 22 FEB 2024 to 21 MAR 2024