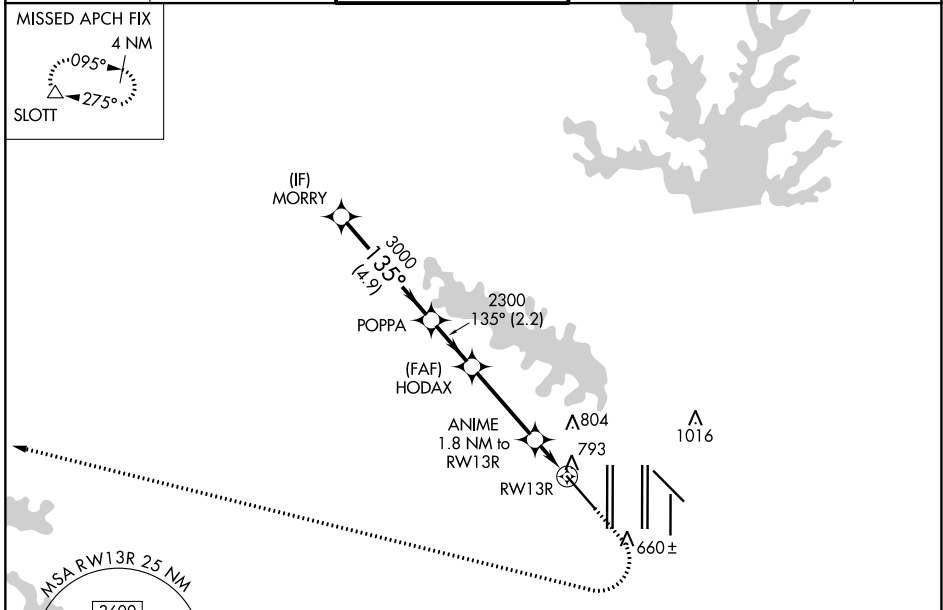


WAAS CH <b>72742</b> <b>W13A</b>	APP CRS <b>135°</b>	Rwy Idg <b>9300</b> TDZE <b>591</b> Apt Elev <b>606</b>
----------------------------------------	------------------------	---------------------------------------------------------------

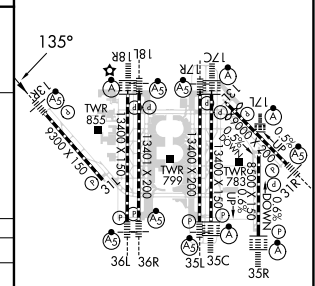
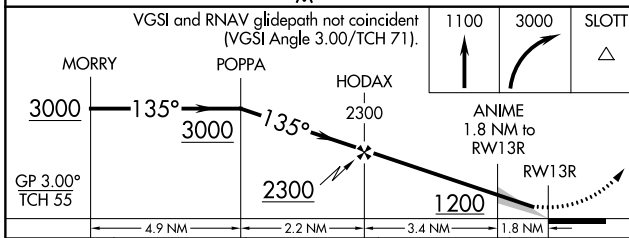
# RNAV (GPS) Y RWY 13R

DALLAS-FORT WORTH INTL (DFW)

RNP APCH - GPS. ▼ For uncompensated Baro-VNAV systems, LNAV/VNAV NA below -8° C or above 54° C. For inop ALS, increase LNAV/VNAV all Cats visibility to RVR 6000 and LNAV Cat C/D visibility to 1/8 SM.		MALSRL AS	MISSED APPROACH: Climb to 1100 then climbing right turn to 3000 direct SLOTT and hold.		
D-ATIS ARR <b>123.775</b> DEP <b>135.925</b>	REGIONAL APP CON <b>133.15 118.1</b>	DFW TOWER <b>126.55 127.5 EAST</b> <b>124.15 134.9 WEST</b>	GND CON <b>121.65 121.8 EAST</b> <b>121.85 WEST</b>	CLNC DEL <b>128.25</b>	CPDLC



ELEV 606	<b>D</b> TDZE 591
----------	-------------------



CATEGORY	A	B	C	D
LPV DA		791/18	200 (200-1/2)	
LNAV/VNAV DA		991/35	400 (400-3/8)	
LNAV MDA	1080/24	489 (500-1/2)	1080/50	489 (500-1)

HIRL all Rwys  
REIL Rws 13L and 31L  
TDZ/CL all Rws except 13L and 31L

SC-2, 22 FEB 2024 to 21 MAR 2024

SC-2, 22 FEB 2024 to 21 MAR 2024