

APP CRS	Rwy Idg	<b>2660</b>
<b>296°</b>	TDZE	<b>30</b>
	Apt Elev	<b>30</b>

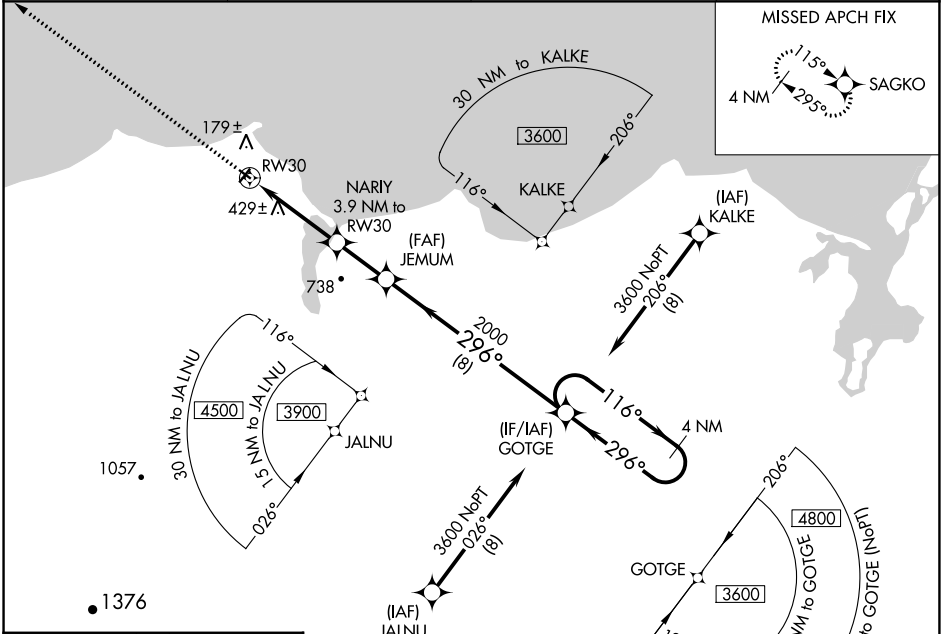
# RNAV (GPS) RWY 30

DEERING (DEE)(PADE)

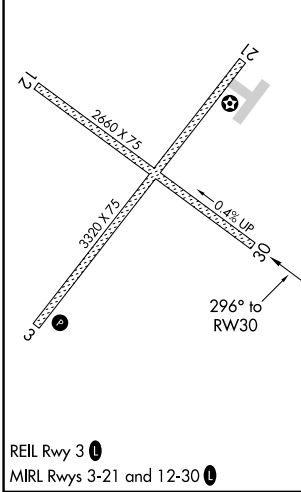
DME/DME RNP-0.3 NA.  
 Rwy 30 helicopter visibility reduction below 1 SM NA.  
 -40°C Straight-in Rwy 12 NA at night, Circling Rwy 12, 30 NA at night.

MISSED APPROACH: Climb to 3000 direct SAGKO and hold.

ASOS <b>135.5</b>	ANCHORAGE CENTER <b>119.2 263.0</b>	KOTZEBUE RADIO <b>122.25</b>	CTAF <b>122.9</b>
----------------------	--	---------------------------------	----------------------



ELEV 30	TDZE 30
---------	---------



 3000 SAGKO Visual Segment - Obstacles.	GOTGE 4 NM Holding Pattern 116° → 3600 ← 296°			
	JEMUM	NARIY	RWY 30	
	3.9 NM	2.2 NM	8 NM	
CATEGORY	A	B	C	D
LNAV MDA	740-1	710 (800-1)	740-2 710 (800-2)	NA
CIRCLING	740-1 710 (800-1)	840-1 810 (900-1)	840-2¼ 810 (900-2¼)	NA

AK, 25 JAN 2024 to 21 MAR 2024

AK, 25 JAN 2024 to 21 MAR 2024