

DODGE CITY, KANSAS

AL-676 (FAA)

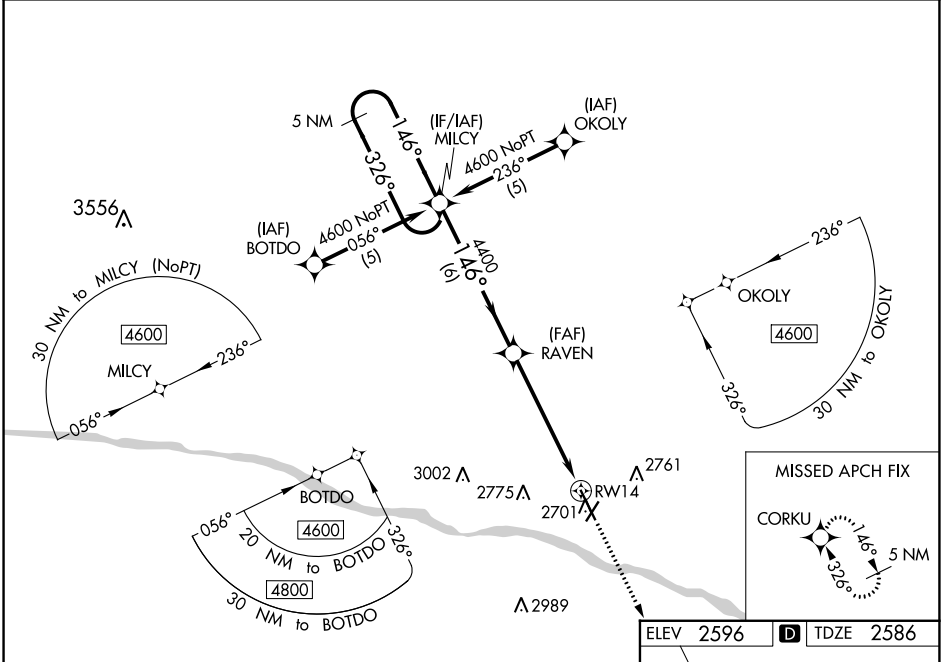
23110

WAAS CH 65609 W14A	APP CRS 146°	Rwy Idg TDZE Apt Elev	6329 2586 2596
--	------------------------	-----------------------------	---

RNAV (GPS) RWY 14

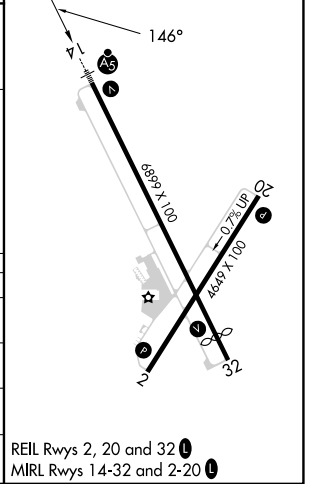
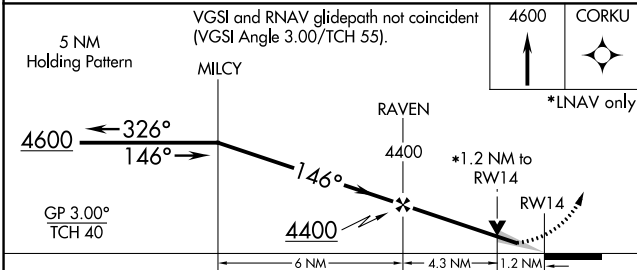
DODGE CITY RGNL (DDC)

⚠ DME/DME RNP-0.3 NA. For uncompensated Baro-VNAV systems, LNAV/VNAV NA below -19°C (-2°F) or above 54°C (130°F). For inop ALS, increase LPV all Cats visibility to ¾ SM and LNAV/VNAV all Cats visibility to 1 ¾ SM.		MALSR 	MISSED APPROACH: Climb to 4600 direct CORKU and hold.
ASOS 118.525	KANSAS CITY CENTER 125.2 285.425	UNICOM 122.7 (CTAF) 0	



NC-2, 22 FEB 2024 to 21 MAR 2024

NC-2, 22 FEB 2024 to 21 MAR 2024



CATEGORY	A	B	C	D
LPV DA		2836-½	250 (300-½)	
LNAV/VNAV DA		2991-1	405 (400-1)	
LNAV MDA	3020-½	434 (500-½)	3020-¾	434 (500-¾)
C CIRCLING	3040-1 444 (500-1)	3080-1 484 (500-1)	3320-2 724 (800-2)	3320-2¼ 724 (800-2¼)

REIL Rwys 2, 20 and 32 0
MIRL Rws 14-32 and 2-20 0

DODGE CITY, KANSAS
Amdt 1B 17AUG17

37°46'N-99°58'W

DODGE CITY RGNL (DDC)

RNAV (GPS) RWY 14