

TRUPS FOUR ARRIVAL (TRUPS, TRUPS4) 29MAR18

TRUPS FOUR ARRIVAL (RNAV) Transition Routes

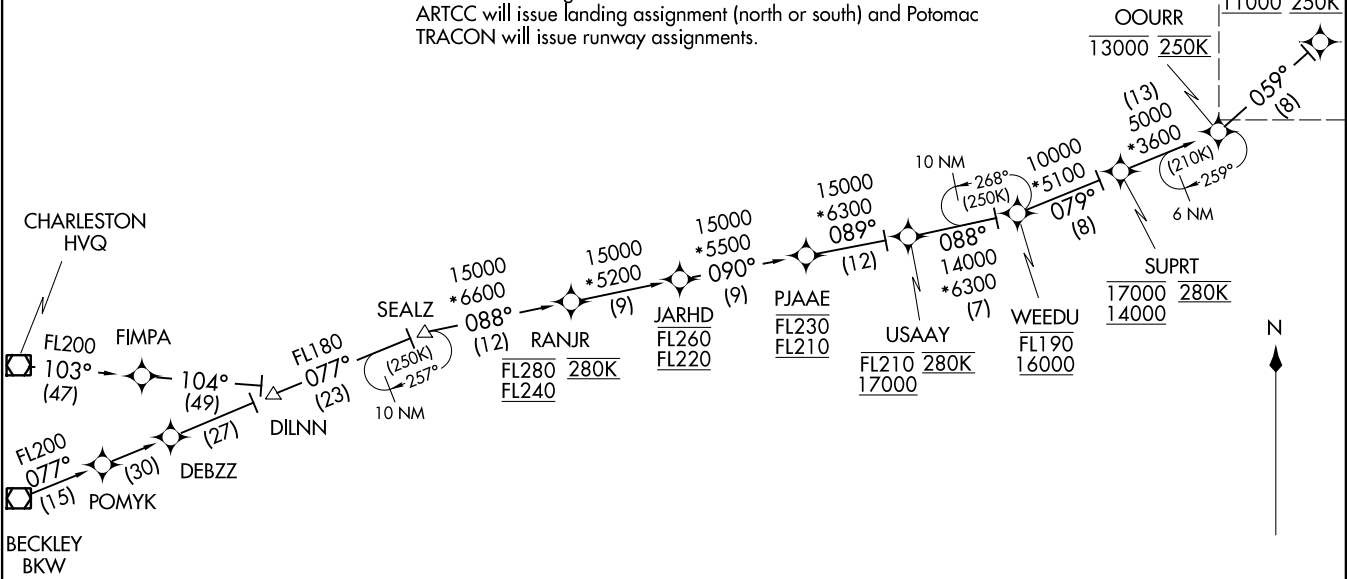
WASHINGTON, DC

POTOMAC APP CON
118.675 323.175
DCA D-ATIS
132.65
KADW D-ATIS
133.675 251.05
*KDAW ATIS
128.175

- NOTE: RADAR required.
 - NOTE: RNAV 1.
 - NOTE: DME/DME/IRU or GPS required.
 - NOTE: Turbojets only; turboprops as assigned by ATC only.
 - NOTE: Prohibited area (P-56) north of DCA-avoid-surface to FL180.
 - NOTE: Maintain last assigned altitude until cleared to "descend via" the TRUPS4.
- ARTCC will issue landing assignment (north or south) and Potomac TRACON will issue runway assignments.

See following page for arrival routes.

| TRUPS | |
|-------|------|
| 11000 | 250K |



BECKLEY TRANSITION (BKW.TRUPS4):
CHARLESTON TRANSITION (HVQ.TRUPS4):

(CONTINUED ON FOLLOWING PAGE)

NOTE: Chart not to scale.

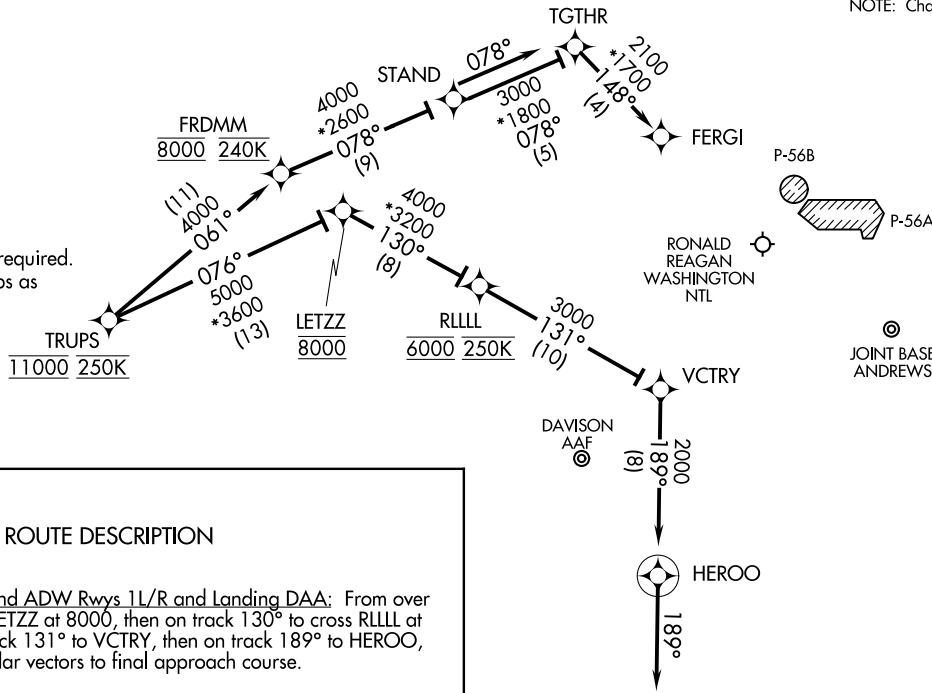
TRUPS, TRUPS4) 21168

TRUPS FOUR ARRIVAL (RNAV) Transition Routes

WASHINGTON, DC

AL-443 (FAA)

NOTE: Chart not to scale.



ARRIVAL ROUTE DESCRIPTION

Landing DCA Rwy 1, 4, 33, and ADW Rwy 11/R and Landing DAA: From over TRUPS on track 076° to cross LETZZ at 8000, then on track 130° to cross RLLLL at 6000 and at 250K, then on track 131° to VCTRY, then on track 189° to HEROO, then on track 189°. Expect radar vectors to final approach course.

Landing DCA Rwy 15, 19, 22: From over TRUPS on track 061° to cross FRDMM at 8000 and 240K, then on track 078° to STAND, then on track 078° to TGTHR, then on track 148° to FERGI. Expect LDA/DME Rwy 19, RNAV/RNP Rwy 19, RIVER VISUAL Rwy 19 or radar vectors to final approach course.

Landing ADW Rwy 19L/R: From over TRUPS on track 061° to cross FRDMM at 8000 and at 240K, then on track 078° to STAND, then on track 078°.

Expect radar vectors to final approach course.

- NOTE: Prohibited area (P-56) north of DCA-avoid surface to FL180.
- NOTE: Maintain last assigned altitude until cleared to "descend via" the TRUPS4. ARTCC will issue landing assignment (north or south) and Potomac TRACON will issue runway assignments.

TRUPS FOUR ARRIVAL (RNAV) Arrival Routes (TRUPS, TRUPS4) 29MARI8

WASHINGTON, DC

TRUPS FOUR ARRIVAL (RNAV) Arrival Routes (TRUPS, TRUPS4) 21224

WASHINGTON, DC

AL-443 (FAA)