

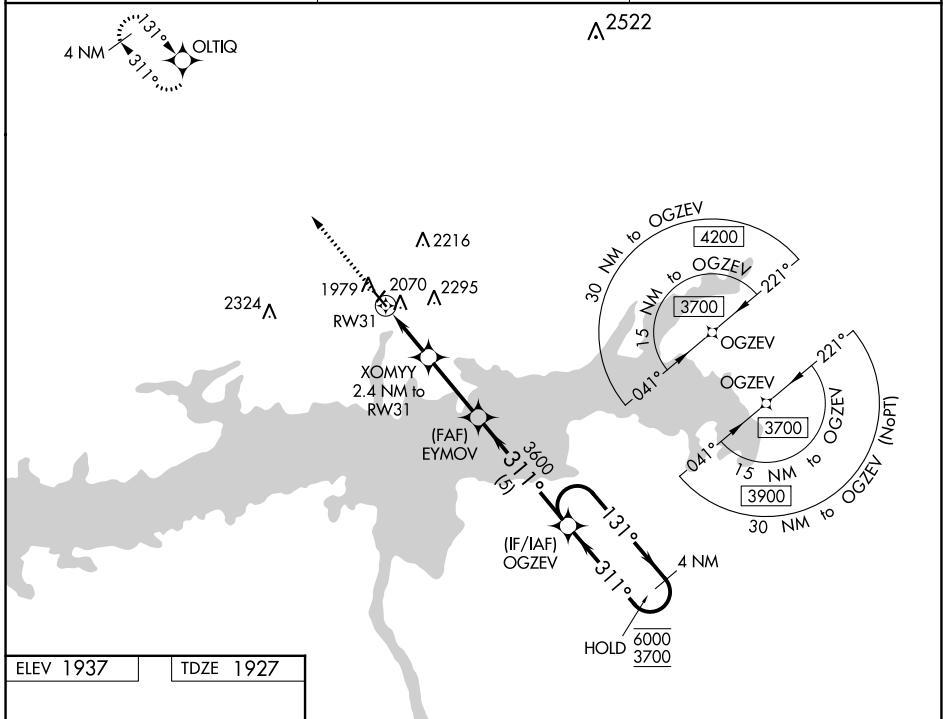
WAAS CH <b>97740</b> W31A	APP CRS <b>311°</b>	Rwy Idg TDZE Apt Elev	<b>3699</b> <b>1927</b> <b>1937</b>
---------------------------------	------------------------	-----------------------------	---

# RNAV (GPS) RWY 31

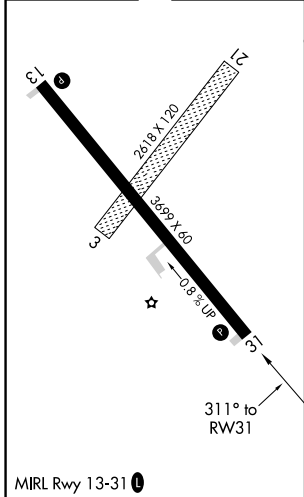
GARRISON MUNI (D05)

RNP APCH	MISSED APPROACH: Climb to 3900 direct OLTIQ and hold.
<p>▼ Circling NA to Rws 3 and 21. Baro-VNAV NA.</p> <p>▲ NA Use Minot Intl altimeter setting.</p>	

MOT ASOS <b>118.725</b>	MINNEAPOLIS CENTER <b>127.6 279.6</b>	CTAF <b>122.9</b>
----------------------------	--	----------------------



ELEV 1937	TDZE 1927
-----------	-----------



3900 OLTIQ VGSi and RNAV glidepath not coincident (VGSi Angle 3.00/TCH 29).

\* LNAV only

EYMOV 3600 4 NM Holding Pattern

XOMYY 2.4 NM to RWY 31

RWY 31 2.8 NM

OGZEV 5 NM

6000 131° → 3700 ← 311°

GP 3.00° TCH 40

CATEGORY	A	B	C	D
LPV DA	2250-1	323 (400-1)		NA
LNAV/VNAV DA	2335-1¼	408 (400-1¼)		NA
LNAV MDA	2460-1	533 (600-1)		NA
<input checked="" type="checkbox"/> CIRCLING	2640-1 703 (800-1)	2720-1 783 (800-1)		NA

NC-1, 22 FEB 2024 to 21 MAR 2024

NC-1, 22 FEB 2024 to 21 MAR 2024