

CODY, WYOMING

AL-5243 (FAA)

23278

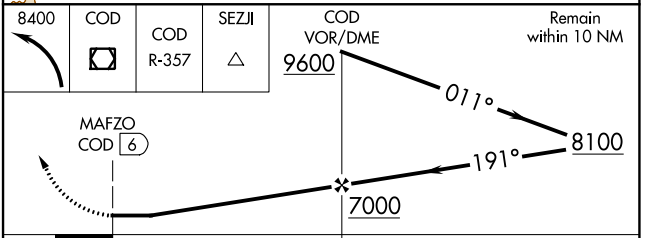
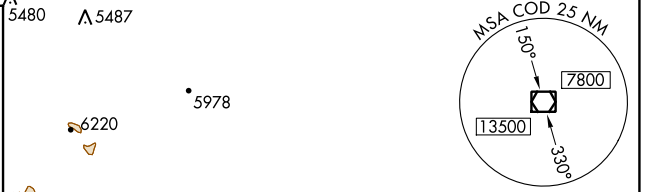
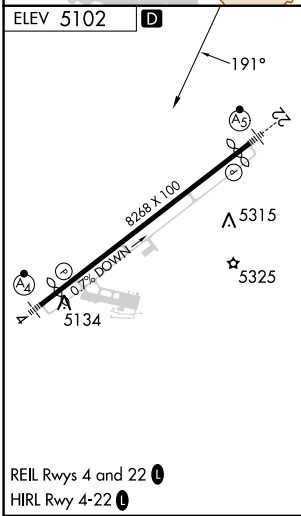
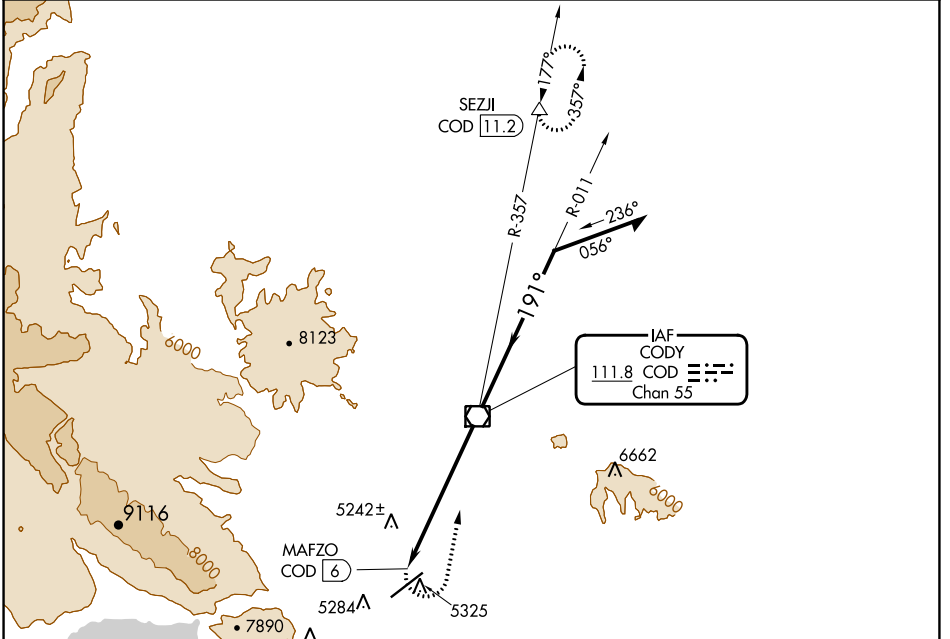
VOR/DME COD 111.8 Chan 55	APP CRS 191°	Rwy Idg TDZE Apt Elev N/A N/A 5102
---	------------------------	--

VOR-A

YELLOWSTONE RGNL (COD)

DME required.		MISSED APPROACH: Climbing left turn to 8400 direct COD VOR/DME and on COD VOR/DME R-357 to SEZJI/COD 11.2 DME and hold.
-10°C		

AWOS-3PT 135.075	SALT LAKE CENTER 127.75 351.9	UNICOM 122.8 (CTAF) 0
----------------------------	---	---------------------------------



CATEGORY	A	B	C	D
C CIRCLING	5780-1 678 (700-1)	5920-1¼ 818 (900-1¼)	5940-2½ 838 (900-2½)	6940-3 1838 (1900-3)

CODY, WYOMING
Amdt 9 26MAR20

44°31'N-109°01'W

VOR-A

YELLOWSTONE RGNL (COD)

NW-1, 22 FEB 2024 to 21 MAR 2024

NW-1, 22 FEB 2024 to 21 MAR 2024