

LOC I-CDB <b><u>110.3</u></b>	APP CRS <b>146°</b>	Rwy Idg <b>10179</b> TDZE <b>75</b> Apt Elev <b>100</b>
----------------------------------	------------------------	---

ILS or LOC RWY 15  
COLD BAY (CDB) (PACD)

DME required.

**▼** Circling NA for Cats B/C/D southwest of Rwy 15-33. DME from CDB VORTAC.  
**▲** Simultaneous reception of I-CDB and CDB DME required. DME values will decrease then increase prior to reaching missed approach point. Circling NA for Cat A southwest of Rwy 15-33 at night. For inop ALS, increase S-LOC 15 Cats C and D visibility to RVR 5500.  
 #RVR 1800 authorized with use of FD or AP or HUD to DA.

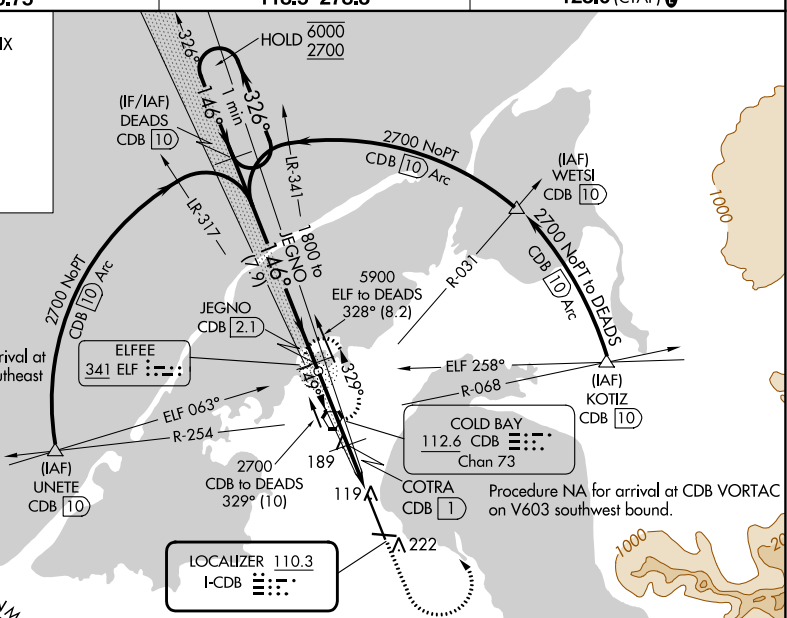
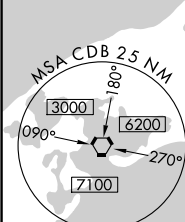
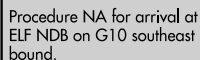
MALSP



**MISSED APPROACH:** Climb to 1100 then climbing left turn to 2700 direct CDB VORTAC and hold, continue climb-in-hold to 2700.

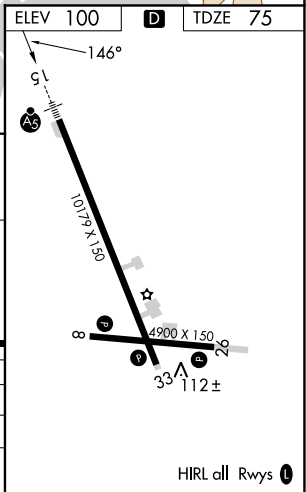
ASOS <b>135.75</b>	ANCHORAGE CENTER <b>118.5 278.3</b>	COLD BAY RADIO <b>123.6 (CTAF) 0</b>
-----------------------	--	---

ALTERNATE  
MISSED APCH FIX



Procedure NA for arrival at CDB VORTAC  
on V603 southwest bound.

CATEGORY	A	B	C	D
S-ILS 15 #	275/24 200 (200-½)			
S-LOC 15	440/24 365 (400-½)	440/35 365 (400-¾)		
CIRCLING	540-1 440 (500-1)	560-1 460 (500-1)	560-1½ 460 (500-1½)	860-2½ 760 (800-2½)



COLD BAY, ALASKA  
Amdt 19 10SEP20

55°12'N-162°44'W

COLD BAY (CDB) (PACD)  
ILS or LOC RWY 15

HIRL all Rwys **L**