

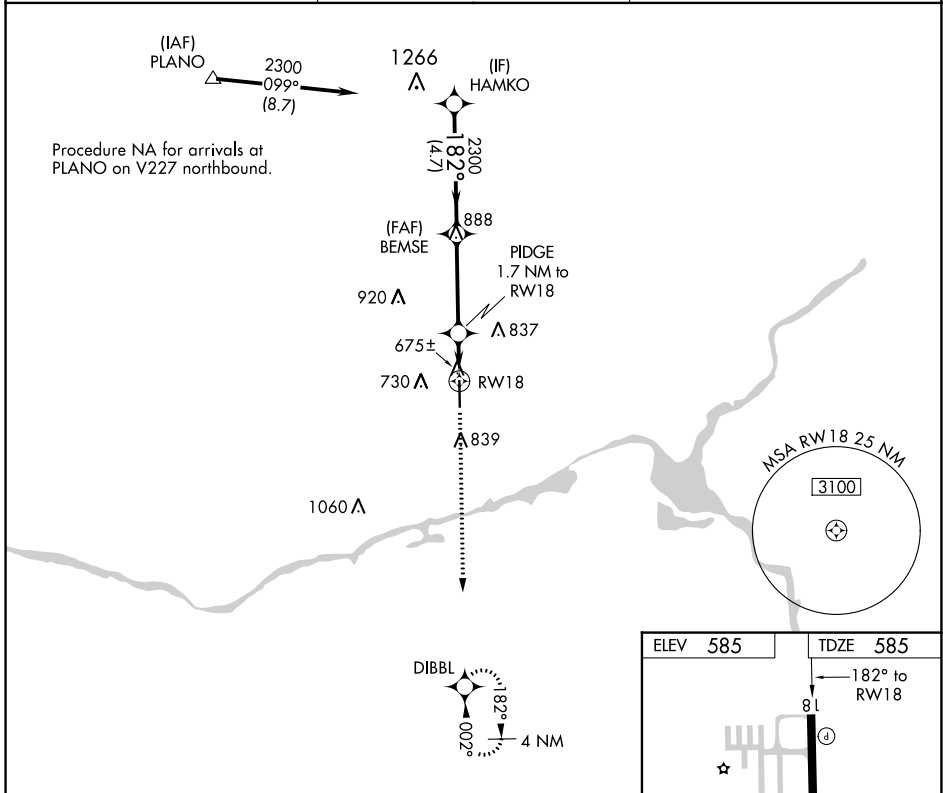
APP CRS	Rwy Idg	5501
182°	TDZE	585
	Apt Elev	585

RNAV (GPS) RWY 18

MORRIS MUNI-JAMES R WASHBURN FLD (C09)

RNP APCH.	<p>▼ Rwy 18 helicopter visibility reduction below 1 SM NA. When local altimeter setting not received, use Joliet altimeter setting and increase all MDA 40 feet, and increase LNAV Cat C visibility 1/8 mile. Straight-in, Circling Rwy 18 NA at night.</p>	<p>▲ MISSED APPROACH: Climb to 2200 direct DIBBL and hold.</p>
-----------	---	--

AWOS-3 118.175	CHICAGO APP CON 119.35 354.075	UNICOM 122.8 (CTAF) 0
--------------------------	--	---------------------------------

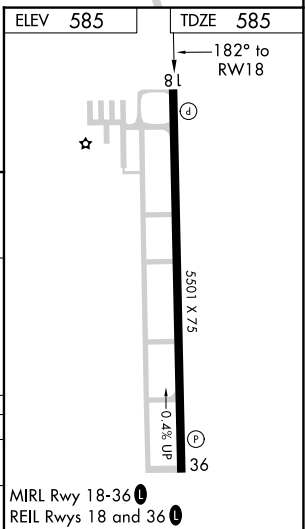


VGSI and descent angles not coincident (VGSI Angle 3.00/TCH 44).

HAMKO	BEMSE	PIDGE 1.7 NM to RW18	RW18
2300	2300	1160	
4.7 NM	3.6 NM	1.7 NM	
182°	3.00° TCH 40		

2200	DIBBL
↑	⊙

CATEGORY	A	B	C	D
LNAV MDA	940-1	355 (400-1)		NA
ⓐ CIRCLING	980-1 395 (400-1)	1140-1 555 (600-1)	1140-1½ 555 (600-1½)	NA



EC-3, 22 FEB 2024 to 21 MAR 2024

EC-3, 22 FEB 2024 to 21 MAR 2024

APP CRS	Rwy Idg	5501
002°	TDZE	570
	Apt Elev	585

RNAV (GPS) RWY 36

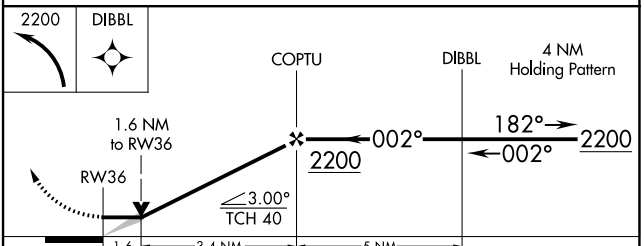
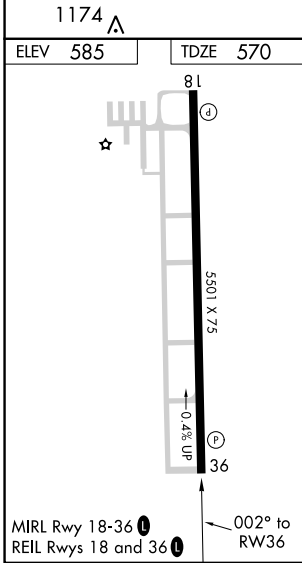
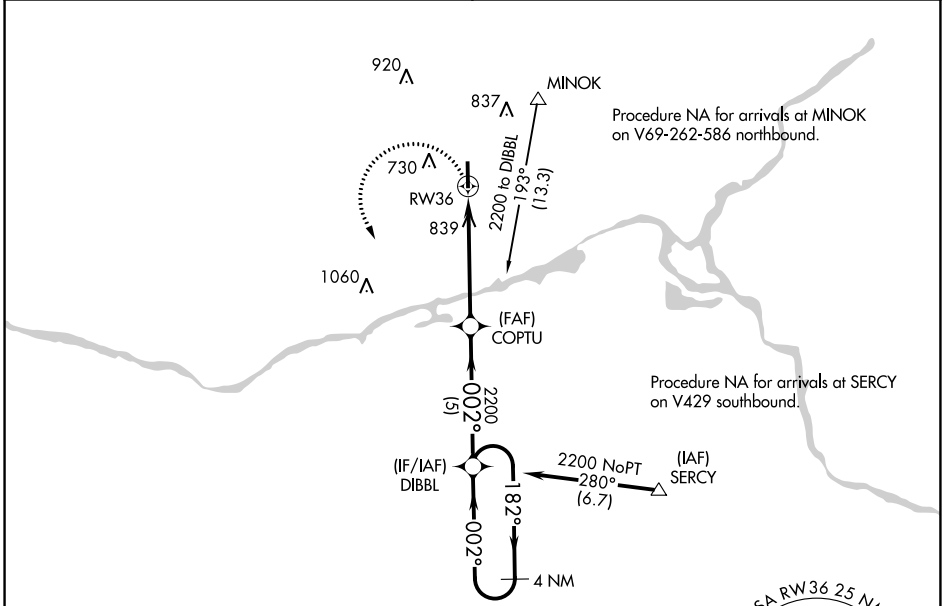
MORRIS MUNI-JAMES R WASHBURN FLD (C09)

▼ Night landing: Rwy 18 NA. DME/DME RNP-0.3 NA. VDP NA with Joliet altimeter setting. When local altimeter setting not received, use Joliet altimeter setting and increase all MDA 40 feet, and increase LNAV and Circling Cat C visibility $\frac{3}{8}$ mile.

▲

MISSED APPROACH: Climbing left turn to 2200 direct DIBBL and hold.

AWOS-3 118.175	CHICAGO APP CON 119.35 354.075	UNICOM 122.8 (CTAF) 0
--------------------------	--	---------------------------------



CATEGORY	A	B	C	D
LNAV MDA	1100-1	530 (600-1)	1100-1½ 530 (600-1½)	NA
CIRCLING	1100-1 515 (600-1)	1140-1 555 (600-1)	1140-1½ 555 (600-1½)	NA

EC-3, 22 FEB 2024 to 21 MAR 2024

EC-3, 22 FEB 2024 to 21 MAR 2024

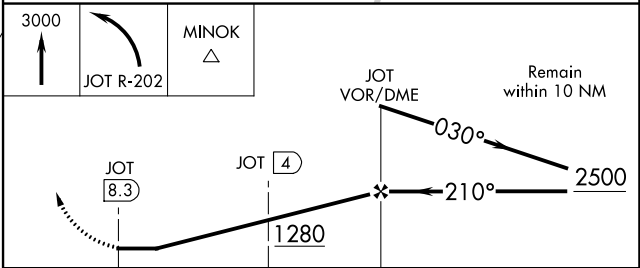
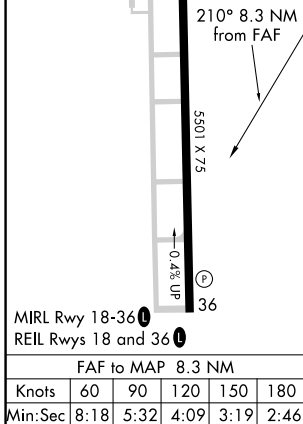
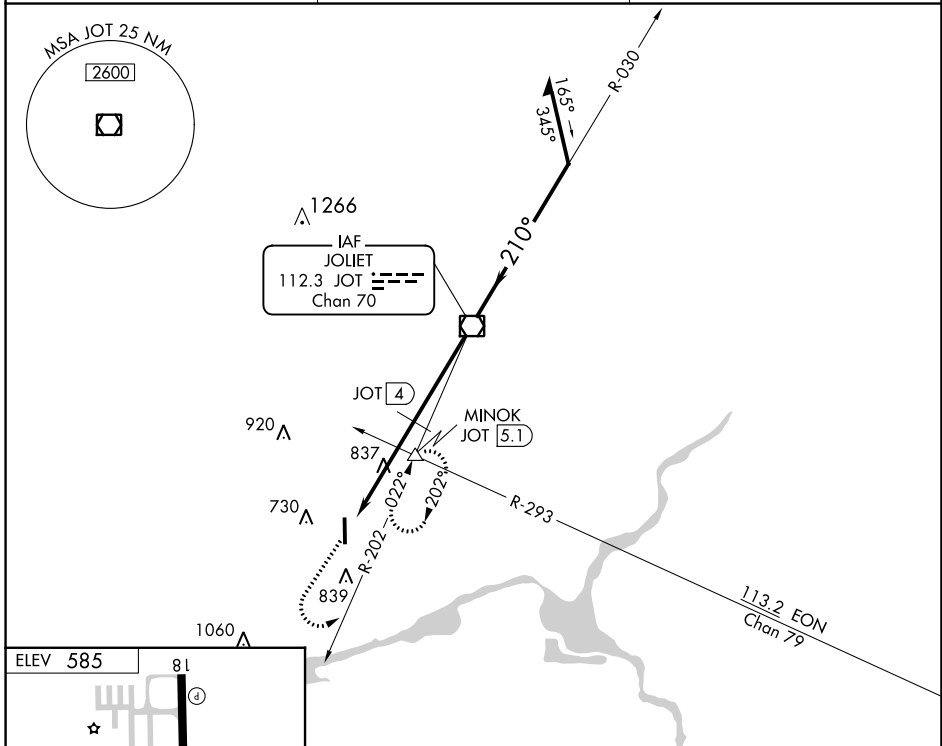
VOR/DME JOT 112.3 Chan 70	APP CRS 210°	Rwy Idg TDZE Apt Elev	N/A N/A 585
---	------------------------	-----------------------------	--

VOR-A

MORRIS MUNI-JAMES R WASHBURN FLD (C09)

▼
MISSED APPROACH: Climb to 3000 then left turn on JOT VOR/DME R-202 to MINOK INT/JOT 5.1 DME and hold.

AWOS-3 118.175	CHICAGO APP CON 119.35 354.075	UNICOM 122.8 (CTAF) 0
--------------------------	--	---------------------------------



CATEGORY	A	B	C	D
CIRCLING	1280-1	696 (700-1)	1280-2	696 (700-2)
DME MINIMUMS				
CIRCLING	1100-1 516 (600-1)	1200-1 616 (700-1)	1200-2 616 (700-2)	NA

VOR-A

EC-3, 22 FEB 2024 to 21 MAR 2024

EC-3, 22 FEB 2024 to 21 MAR 2024