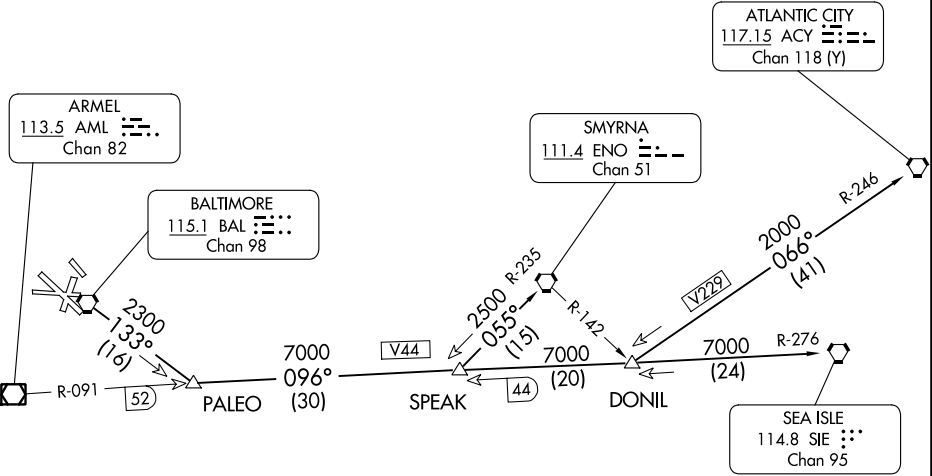


(PALEO3.PALEO) 23334
PALEO THREE DEPARTURE

BALTIMORE/
 WASHINGTON INTL THURGOOD MARSHALL (BWI)
 AL-804 (FAA) BALTIMORE, MARYLAND

D-ATIS 115.1 127.8
 CLNC DEL 118.05
 GND CON 121.9
 BALTIMORE TOWER
 119.4 257.8
 POTOMAC DEP CON
 124.55
 CPDLC



TAKE-OFF MINIMUMS:

Rwys 4, 10, 15L, 15R, 22, 28 STANDARD.
 Rwys 33L, 33R, 1400-3 or STANDARD with minimum
 climb of 250' per NM to 1900'.

NOTE: Rwy 15L: Trees 620' left of DER, 57' AGL/172' MSL.
 NOTE: Rwy 33R: Trees 914' right of DER, 124' AGL/266' MSL.
 Trees 648' left of DER, 106' AGL/248' MSL.

NOTE: Chart not to scale.

DEPARTURE ROUTE DESCRIPTION

TAKE-OFF RWY 28:

JETS: Fly runway heading until 3 DME, then turn left heading 150°. Thence

PROPS: Fly runway heading. Thence

TAKE-OFF ALL OTHER RUNWAYS: Fly runway heading. Thence

. . . . for vectors to transition or assigned route, expect clearance to filed altitude ten minutes after departure.

ATLANTIC CITY TRANSITION (PALEO3.ACY): From over BAL VORTAC via BAL R-133 to PALEO INT, then via SIE VORTAC R-276 to DONIL INT, then via ACY VORTAC R-246 to ACY VORTAC.

SEA ISLE TRANSITION (PALEO3.SIE): From over BAL VORTAC via BAL R-133 to PALEO INT, then via SIE VORTAC R-276 to SIE VORTAC.

SMYRNA TRANSITION (PALEO3.ENO): From over BAL VORTAC via BAL R-133 to PALEO INT, then via SIE VORTAC R-276 to SPEAK INT, then via ENO VORTAC R-235 to ENO VORTAC.

PALEO THREE DEPARTURE
 (PALEO3.PALEO) 05OCT00

BALTIMORE/
 WASHINGTON INTL THURGOOD MARSHALL (BWI)
 BALTIMORE, MARYLAND

NE-3, 22 FEB 2024 to 21 MAR 2024

NE-3, 22 FEB 2024 to 21 MAR 2024