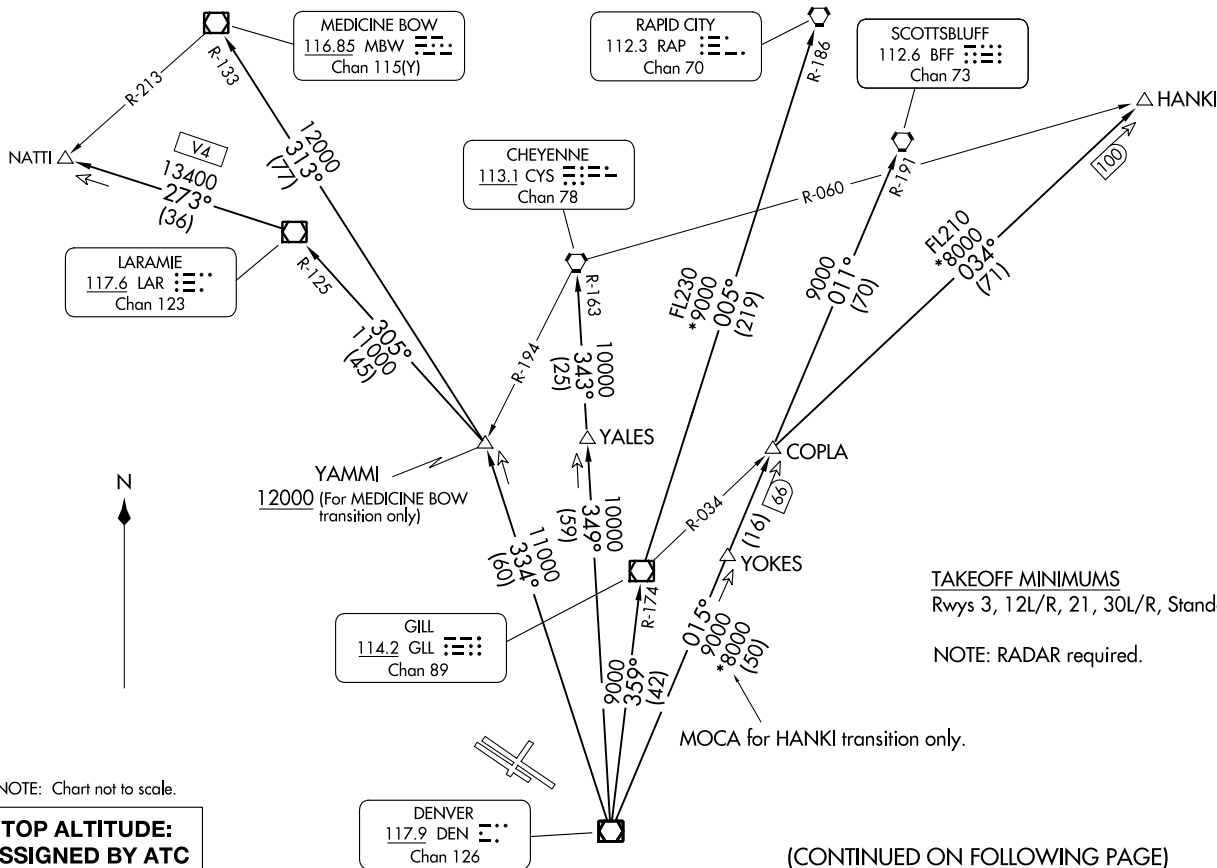


DENVER DEP CON
125.12 263.02
ATIS
126.25
CLNC DEL
132.6

TAKEOFF MINIMUMS
Rwys 3, 12L/R, 21, 30L/R, Standard.

NOTE: RADAR required.

(CONTINUED ON FOLLOWING PAGE)





DEPARTURE ROUTE DESCRIPTION

- TAKEOFF RUNWAY 3: Climb to assigned altitude and heading between 350° CW 150° from DER, thence. . . .
- TAKEOFF RUNWAYS 12L/R: Climb to assigned altitude and heading between 150° CCW 350° from DER, thence. . . .
- TAKEOFF RUNWAY 21: Climbing left turn to assigned altitude and heading between 150° CCW to 024° from DER, thence. . . .
- TAKEOFF RUNWAYS 30L/R: Climbing right turn to assigned altitude and heading between 350° CW 113° from DER, thence. . . .

. . . .RADAR vectors to assigned route. Expect filed altitude 10 minutes after departure.

LOST COMMUNICATIONS: If no transmissions are received within one minute after departure, maintain assigned heading until 7000 feet, then climb to filed altitude direct DEN VOR/DME, then on assigned transition. If filed altitude is above 10000 feet, cross DEN VOR/DME at or above 11000 feet.

- CHEYENNE TRANSITION (YELLO4.CYS): From over DEN VOR/DME on DEN R-349 and CYS R-163 to CYS VORTAC.
- HANKI TRANSITION (YELLO4.HANKI): From over DEN VOR/DME on DEN R-015 and GLL R-034 to HANKI.
- LARAMIE TRANSITION (YELLO4.LAR): From over DEN VOR/DME on DEN R-334 and LAR R-125 to LAR VOR/DME.
- MEDICINE BOW TRANSITION (YELLO4.MBW): From over DEN VOR/DME on DEN R-334 and MBW R-133 to MBW VOR/DME.
- NATTI TRANSITION (YELLO4.NATTI): From over DEN VOR/DME on DEN R-334 and LAR R-125 to LAR VOR/DME, then on LAR R-273 to NATTI.
- RAPID CITY TRANSITION (YELLO4.RAP): From over DEN VOR/DME on DEN R-359 and GLL R-174 to GLL VOR/DME, then on GLL R-005 and RAP R-186 to RAP VORTAC.
- SCOTTSBLUFF TRANSITION (YELLO4.BFF): From over DEN VOR/DME on DEN R-015 and BFF R-191 to BFF VORTAC.