

SKYEE ONE DEPARTURE (RNAV)

AL-5612 (FAA)

ROCKY MOUNTAIN METRO (BJC)
DENVER, COLORADO

ATIS
126.25
CLNC DEL
132.6
DENVER DEP CON
125.12 263.02

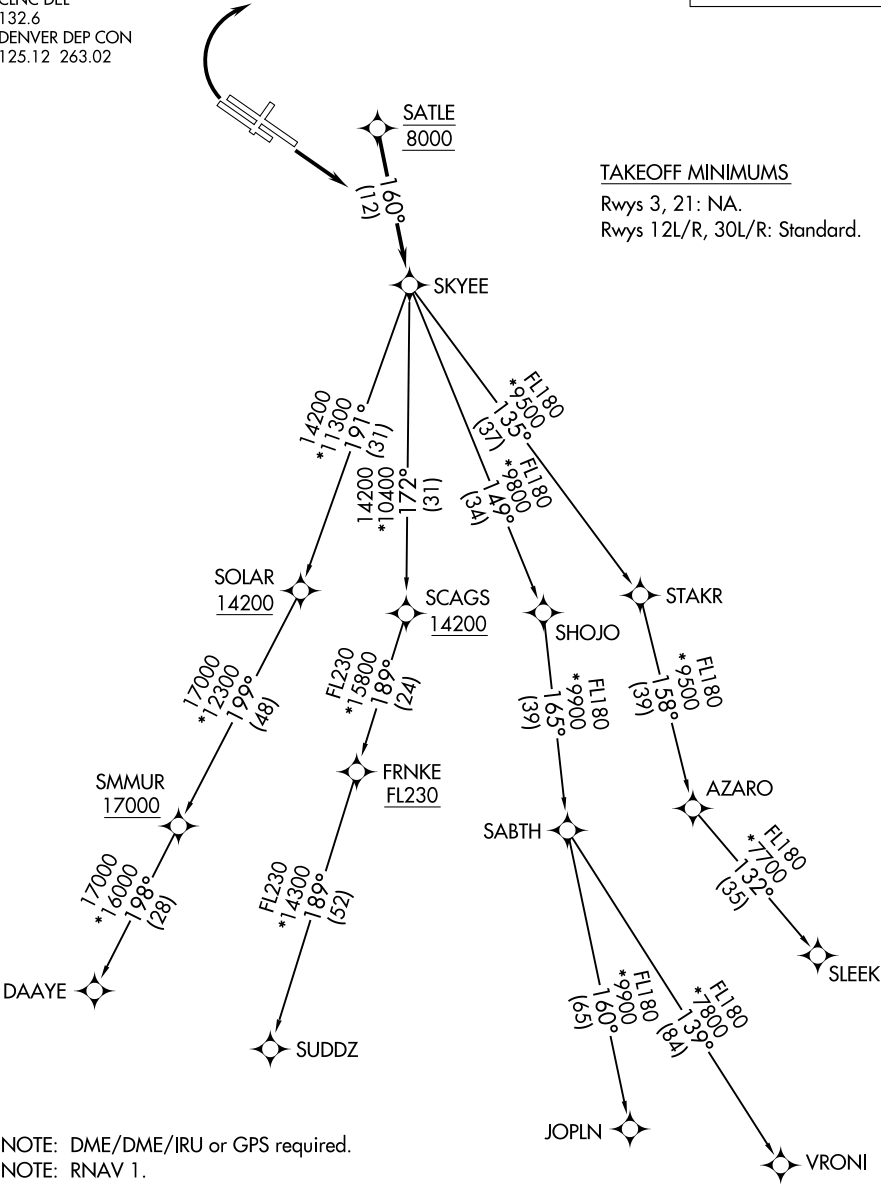
TOP ALTITUDE:
FL230

TAKEOFF MINIMUMS

Rwys 3, 21: NA.
Rwys 12L/R, 30L/R: Standard.

SW-1, 22 FEB 2024 to 21 MAR 2024

SW-1, 22 FEB 2024 to 21 MAR 2024



NOTE: DME/DME/IRU or GPS required.
NOTE: RNAV 1.
NOTE: Turbojets only.
NOTE: RADAR required.

NOTE: Chart not to scale.

(NARRATIVE ON FOLLOWING PAGE)

SKYEE ONE DEPARTURE (RNAV)

(SKYEE1.SKYEE) 26MAR20

DENVER, COLORADO
ROCKY MOUNTAIN METRO (BJC)



DEPARTURE ROUTE DESCRIPTION

TAKEOFF RUNWAYS 12L/R: Climb on a heading between 350° CW 150° as assigned by ATC. Thence. . . .

TAKEOFF RUNWAYS 30L/R: Climbing right turn on a heading between 350° CW 113° as assigned by ATC. Thence. . . .

. . . .expect RADAR vectors to cross SATLE at 8000 then on track 160° to SKYEE then on (transition) maintain FL230 or filed lower altitude. Expect higher filed altitude ten minutes after departure.

DAAYE TRANSITION (SKYEE1.DAAYE)

JOPLN TRANSITION (SKYEE1.JOPLN)

SLEEK TRANSITION (SKYEE1.SLEEK)

SUDDZ TRANSITION (SKYEE1.SUDDZ)

VRONI TRANSITION (SKYEE1.VRONI)

SW-1, 22 FEB 2024 to 21 MAR 2024

SW-1, 22 FEB 2024 to 21 MAR 2024