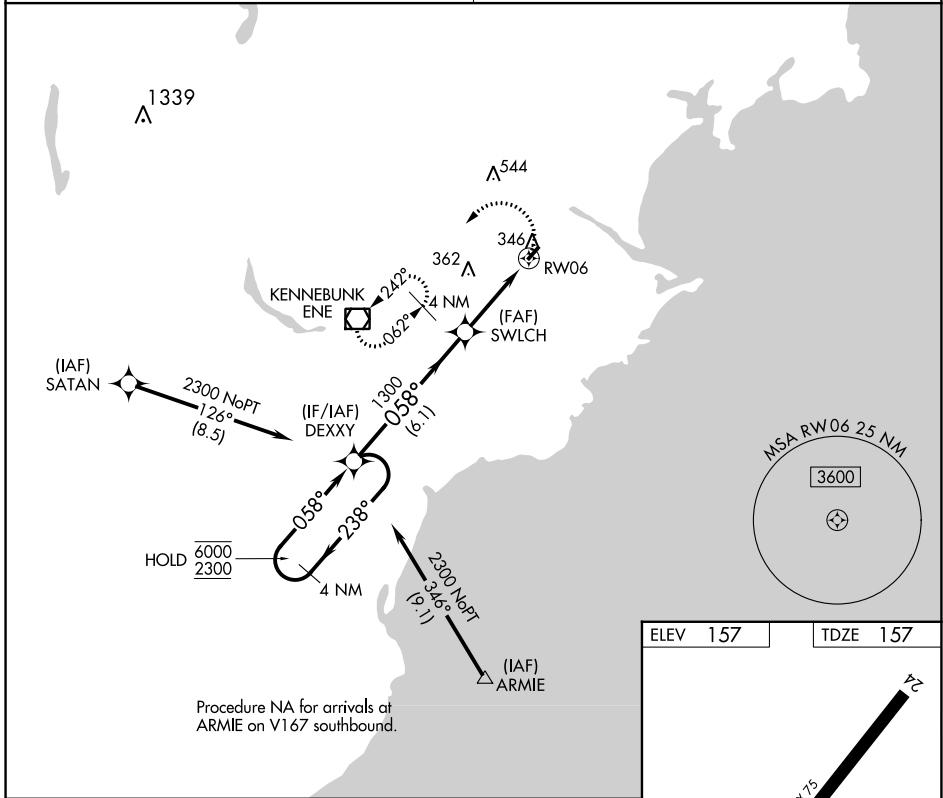


APP CRS	Rwy Idg	3000
058°	TDZE	157
	Apt Elev	157

RNAV (GPS) RWY 6

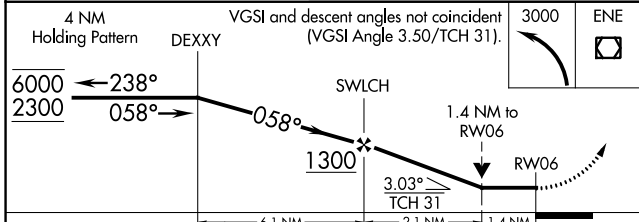
BIDDEFORD MUNI (B19)

RNP APCH.		MISSED APPROACH: Climbing left turn to 3000 direct ENE VOR/DME and hold, continue climb-in-hold to 3000.
▼ Rwy 6 helicopter visibility reduction below 3/4 SM NA. Obtain local altimeter setting on CTAF; when not received use Sanford altimeter setting and increase all MDA 40 feet and LNAV visibility Cat C 1/8 SM, and Circling visibility Cat C 1/4 SM. VDP NA when using Sanford altimeter setting. Circling Rwy 24 NA at night. ▲ NA	PORTLAND APP CON ★ 119.75 269.35	



NE-1, 22 FEB 2024 to 21 MAR 2024

NE-1, 22 FEB 2024 to 21 MAR 2024



ELEV 157	TDZE 157
----------	----------

REIL Rwy 6 1
MRL Rwy 6-24 1

CATEGORY	A	B	C	D
LNAV MDA	680-1	523 (600-1)	680-1½ 523 (600-1½)	NA
CIRCLING	780-1	623 (700-1)	800-1¾ 643 (700-1¾)	NA

VORTAC ENE 117.1 Chan 118	APP CRS 088°	Rwy Idg TDZE Apt Elev	3000 157 157
---	------------------------	-----------------------------	---

VOR RWY 6

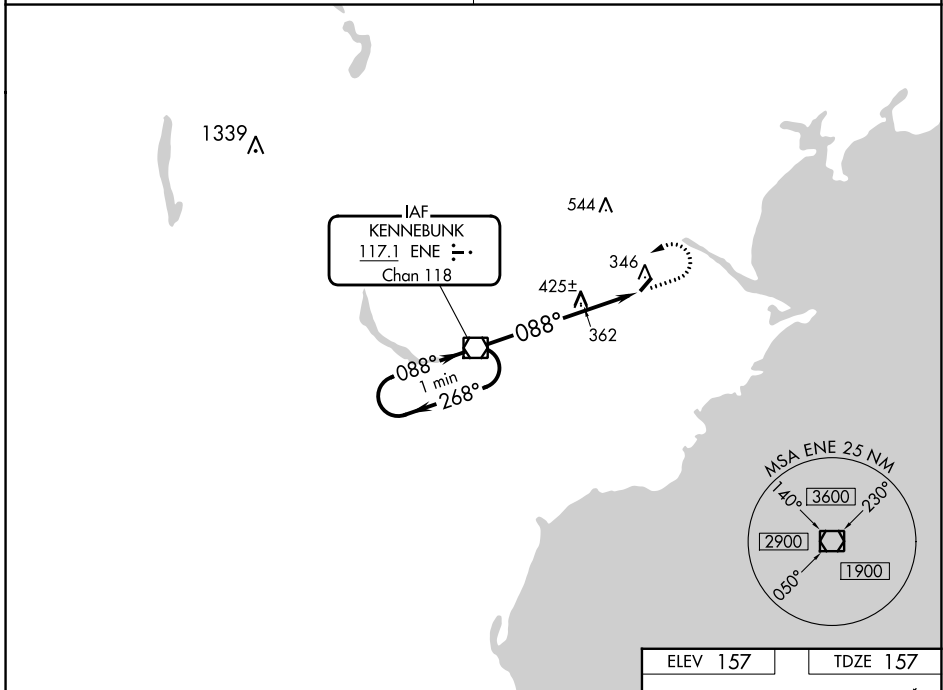
BIDDEFORD MUNI (B19)

NA Obtain local altimeter on CTAF; when not received, use Sanford altimeter setting.
VDP NA when using Sanford altimeter setting. Circling Rwy 24 NA at night.
Rwy 6 helicopter visibility reduction below 3/4 SM NA.

MISSED APPROACH: Climb to 800, then climbing left turn to 2300 direct ENE VOR/DME and hold.

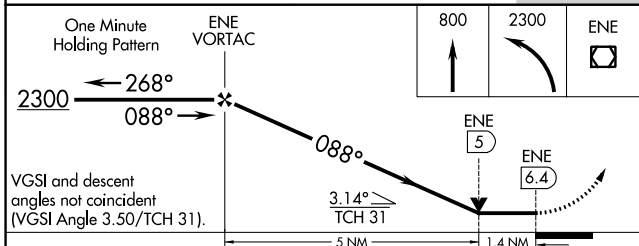
PORTLAND APP CON *
119.75 269.35

UNICOM
123.0 (CTAF) 0



NE-1, 22 FEB 2024 to 21 MAR 2024

NE-1, 22 FEB 2024 to 21 MAR 2024



CATEGORY	A	B	C	D
S-6	700-1	543 (600-1)	700-1 5/8 543 (600-1 5/8)	NA
CIRCLING	700-1 543 (600-1)	720-1 563 (600-1)	800-1 3/4 643 (700-1 3/4)	NA
SANFORD ALTIMETER SETTING MINIMUMS				
S-6	740-1	583 (600-1)	740-1 3/4 583 (600-1 3/4)	NA
CIRCLING	740-1 583 (600-1)	760-1 603 (700-1)	840-2 683 (700-2)	NA

ELEV 157	TDZE 157
REIL Rwy 6 0 MIRL Rwy 6-24 0	
FAF to MAP 6.4 NM	
Knots	60 90 120 150 180
Min:Sec	6:24 4:16 3:12 2:34 2:08