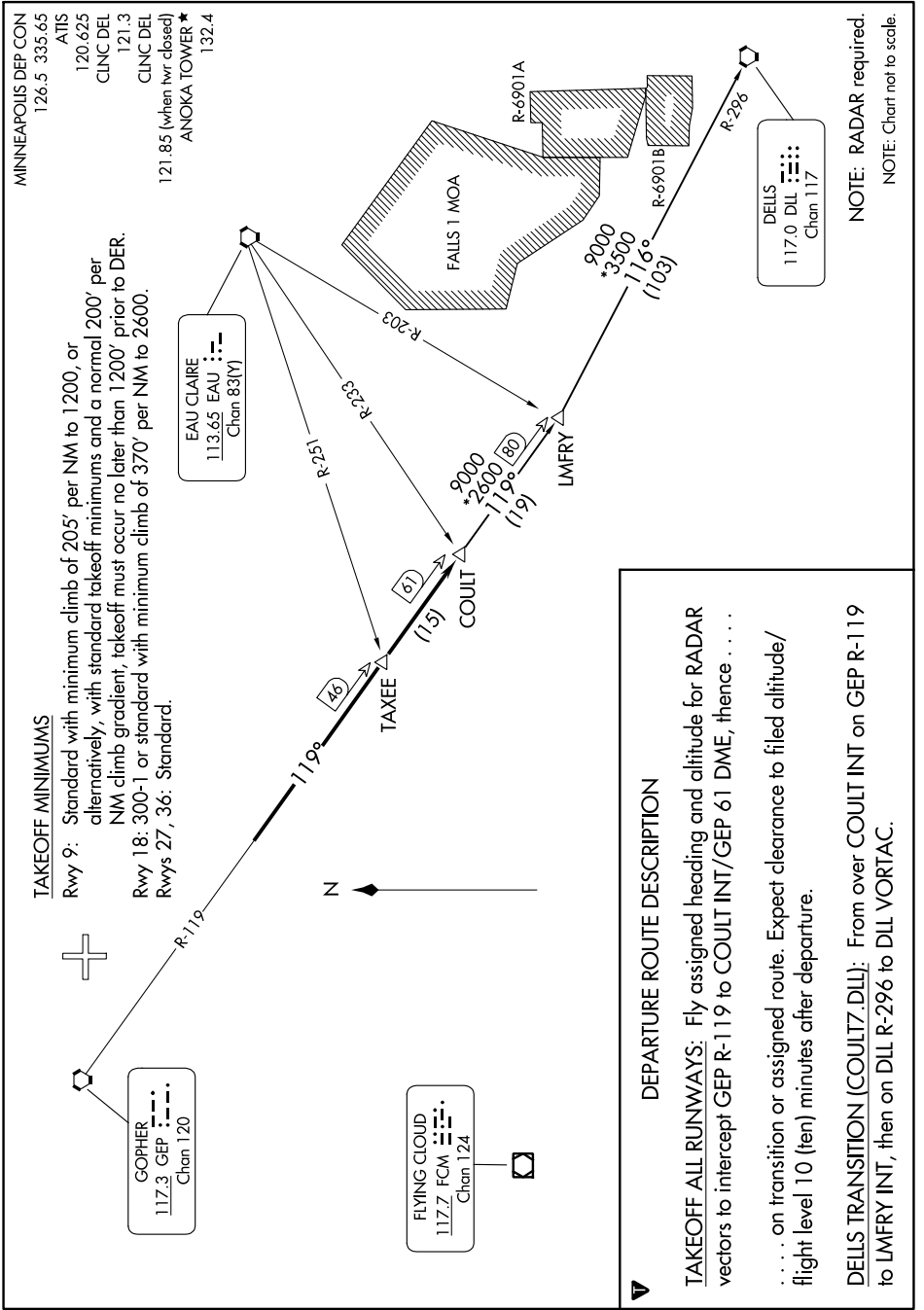


# COULT SEVEN DEPARTURE

NC-1, 22 FEB 2024 to 21 MAR 2024



NOTE: RADAR required.  
NOTE: Chart not to scale.

**DEPARTURE ROUTE DESCRIPTION**

**TAKEOFF ALL RUNWAYS:** Fly assigned heading and altitude for RADAR vectors to intercept GEP R-119 to COULT INT/ GEP 61 DME, thence . . . . . on transition or assigned route. Expect clearance to filed altitude/ flight level 10 (ten) minutes after departure.

**DELLS TRANSITION (COULT.DLL):** From over COULT INT on GEP R-119 to LMFRY INT, then on DLL R-296 to DLL VORTAC.

NC-1, 22 FEB 2024 to 21 MAR 2024