

(KWEEN4.KWEEN) 19003

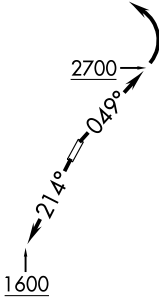
AL-6081 (FAA)

GASTONIA MUNI (AKH)
GASTONIA, NORTH CAROLINA

KWEEN FOUR DEPARTURE (RNAV)

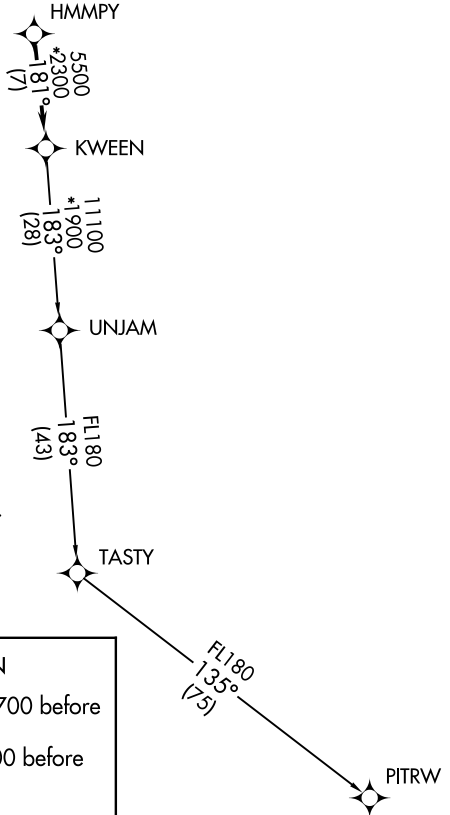
ASOS
135.725
CLNC DEL
127.2
UNICOM (CTAF)
123.0
CHARLOTTE DEP CON
120.05 257.2

**TOP ALTITUDE:
3000**



TAKEOFF MINIMUMS

Rwys 3, 21: Standard.



- NOTE: For turbojets only.
- NOTE: DME/DME/IRU or GPS required.
- NOTE: RNAV 1.
- NOTE: RADAR required.
- NOTE: If unable to accept climb rates, advise ATC on initial contact.
- NOTE: Upon reaching 10000 MSL, accelerate to and maintain 280K, if unable advise ATC.
- NOTE: Transponder code will be issued via PDC or Charlotte CLNC DEL.

DEPARTURE ROUTE DESCRIPTION

TAKEOFF RWY 3: Climbing heading 049° to 2700 before turning left.

TAKEOFF RWY 21: Climb heading 214° to 1600 before proceeding north.

Climb on heading assigned by ATC, expect RADAR vectors to HMMPY, then on track 181° to KWEEN, then on assigned transition, maintain 3000, expect filed altitude within 10 minutes after departure.

PITRW TRANSITION (KWEEN4.PITRW)

UNJAM TRANSITION (KWEEN4.UNJAM)

NOTE: Chart not to scale.

KWEEN FOUR DEPARTURE (RNAV)

(KWEEN4.KWEEN) 03JAN19

GASTONIA, NORTH CAROLINA
GASTONIA MUNI (AKH)

SE-2, 22 FEB 2024 to 21 MAR 2024

SE-2, 22 FEB 2024 to 21 MAR 2024