

APP CRS	Rwy Idg	5350
022°	TDZE	772
	Apt Elev	776

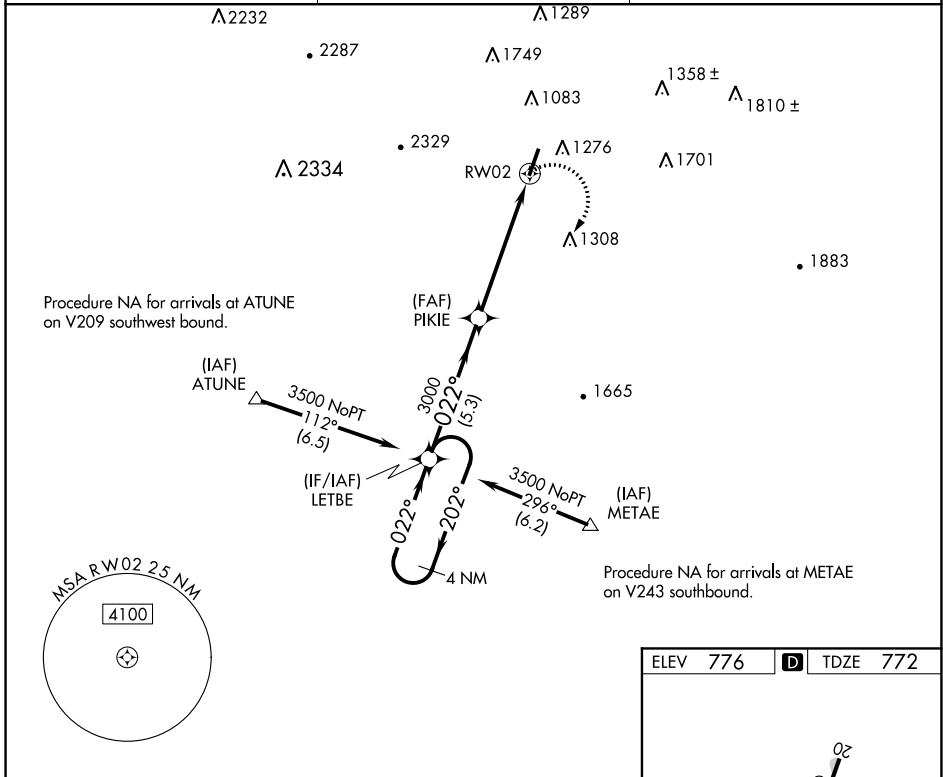
RNAV (GPS) RWY 2

BARWICK LAFAYETTE (9A5)

▽ DME/DME RNP-0.3 NA. Procedure NA at night. Rwy 2 helicopter visibility reduction below 1 SM NA. When local altimeter not received, use Chattanooga altimeter setting and increase all MDA 80 feet and increase Circling visibility ¼ SM.

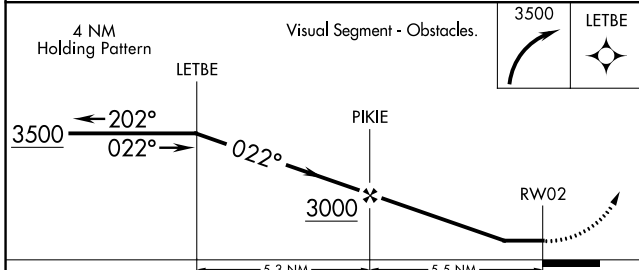
MISSED APPROACH: Climbing right turn to 3500 direct LETBE and hold.

AWOS-3 119.775	CHATTANOOGA APP CON ★ 125.1 379.1	UNICOM 122.8 (CTAF) 0
--------------------------	---	---------------------------------

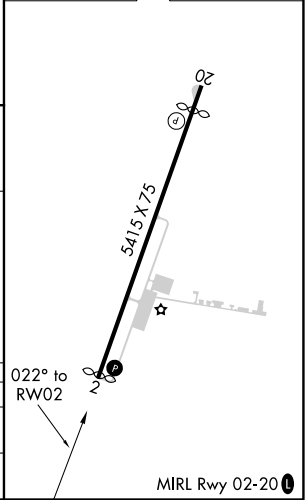


SE-4, 19 MAY 2022 to 16 JUN 2022

SE-4, 19 MAY 2022 to 16 JUN 2022



ELEV 776	D TDZE 772
----------	-------------------



CATEGORY	A	B	C	D
LNNAV MDA	1500-1 728 (800-1)		NA	
C CIRCLING	1660-1 884 (900-1)		NA	

WAAS CH 86241 W20A	APP CRS 203°	Rwy Idg TDZE Apt Elev	4966 776 776
--	------------------------	-----------------------------	---

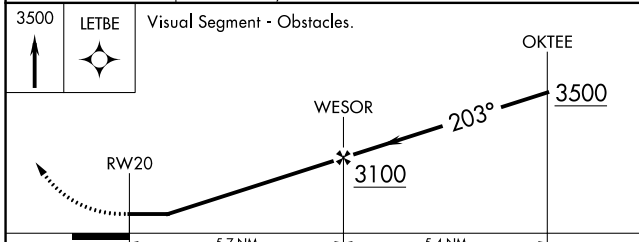
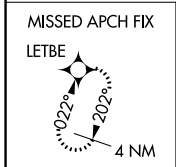
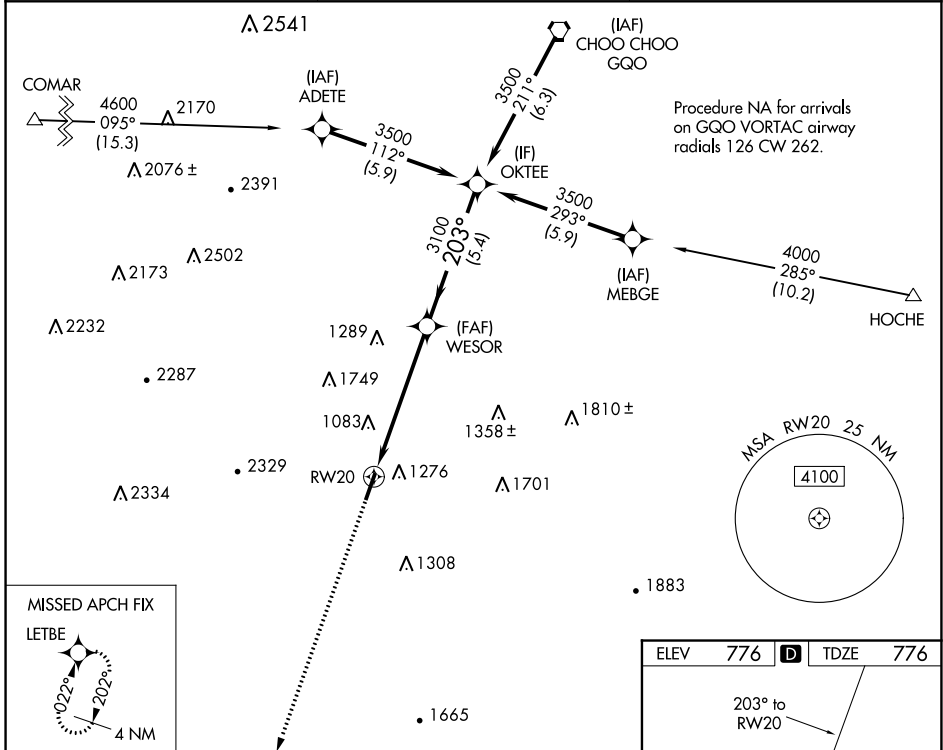
RNAV (GPS) RWY 20

BARWICK LAFAYETTE (9A5)

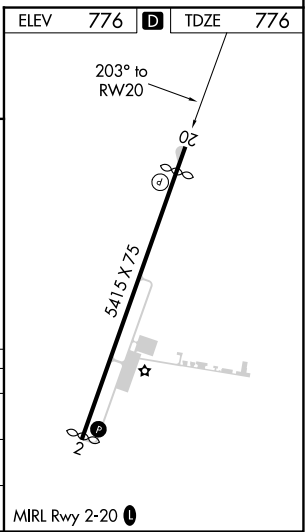
⚠ DME/DME RNP-0.3 NA. Procedure NA at night.
⚠ Rwy 20 helicopter visibility reduction below 1 SM NA.
 When local altimeter setting not received, use Chattanooga altimeter setting and increase all MDA 80 feet and increase Circling visibility 1/4 SM.

MISSED APPROACH: Climb to 3500 direct LETBE and hold.

AWOS-3 119.775	CHATTANOOGA APP CON ★ 125.1 379.1	UNICOM 122.8 (CTAF) 0
--------------------------	---	---------------------------------



CATEGORY	A	B	C	D
LP MDA	1440-1 664 (700-1)		NA	
LNAV MDA	1600-1 824 (900-1)		NA	
C CIRCLING	1660-1 884 (900-1)		NA	



SE-4, 19 MAY 2022 to 16 JUN 2022

SE-4, 19 MAY 2022 to 16 JUN 2022