

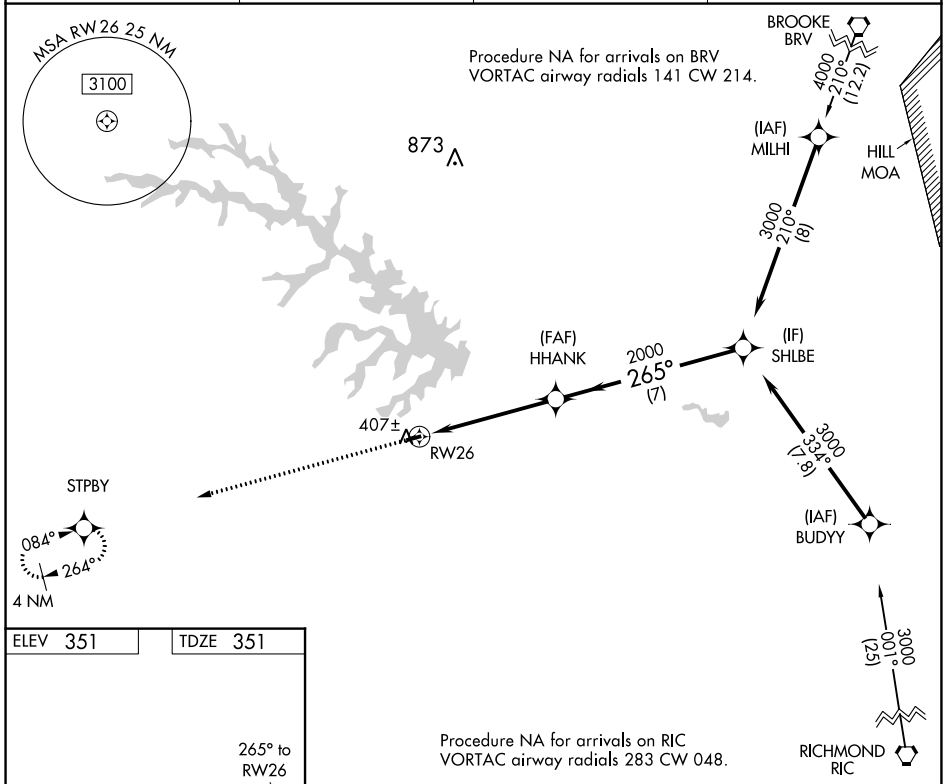
APP CRS	Rwy Idg	<b>2558</b>
<b>265°</b>	TDZE	<b>351</b>
	Apt Elev	<b>351</b>

# RNAV (GPS) RWY 26

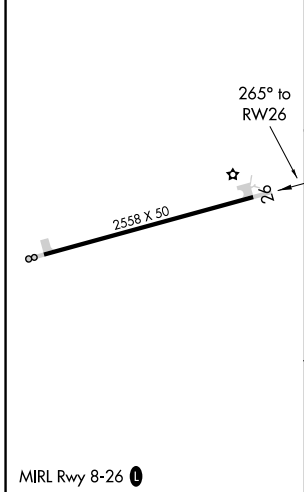
LAKE ANNA (7W4)

RNP APCH.	MISSED APPROACH: Climb to 3000 direct STPBV and hold.
<p>▼ Procedure NA at night. When local altimeter setting not received, use Louisa altimeter setting and increase all MDA 60 feet.</p> <p>▲ Helicopter visibility reduction below 3 SM NA.</p>	

AWOS-3 <b>120.775</b>	LKU AWOS-3 <b>119.475</b>	POTOMAC APP CON <b>126.75 307.2</b>	CTAF <b>122.9 0</b>
--------------------------	------------------------------	----------------------------------------	------------------------



ELEV 351	TDZE 351
----------	----------



	3000	STPBV	Visual Segment - Obstacles.	SHLBE
				3000
			HHANK	
			2000	
			5.1 NM	7 NM
CATEGORY	A	B	C	D
LNAV MDA	1360-3	1009 (1100-3)		NA
CIRCLING	1360-3	1009 (1100-3)		NA

NE-3, 27 JAN 2022 to 24 FEB 2022

NE-3, 27 JAN 2022 to 24 FEB 2022

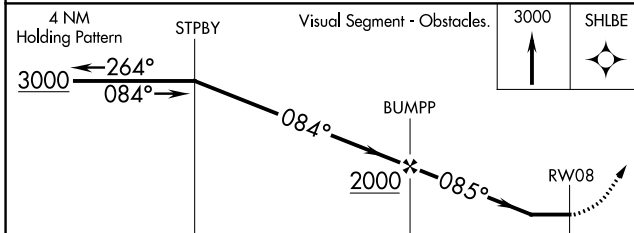
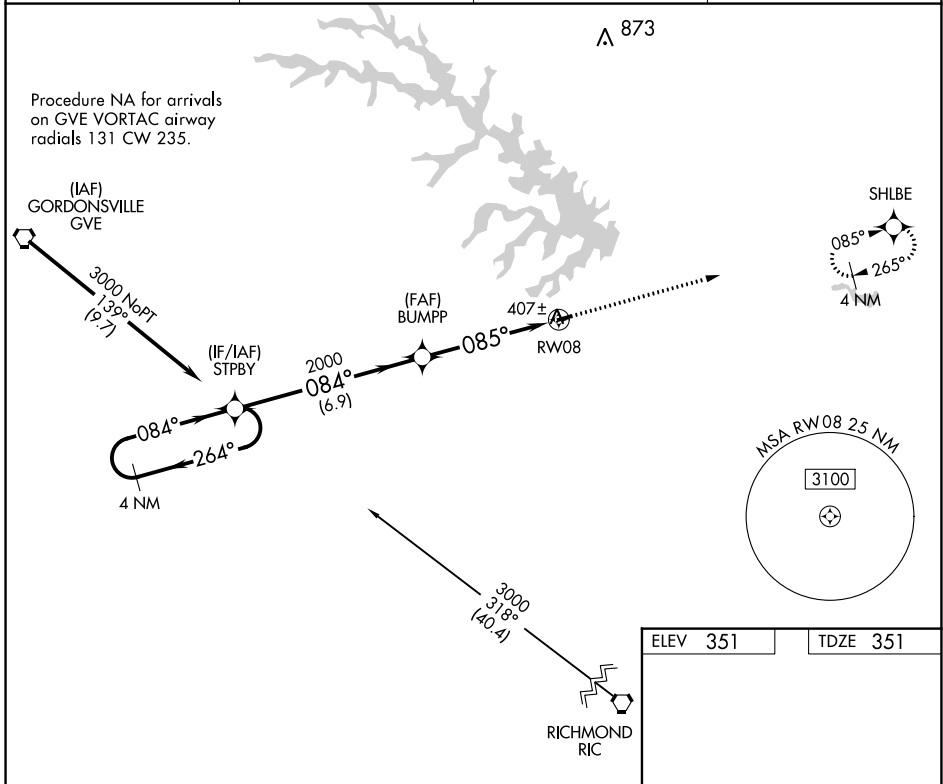
APP CRS	Rwy Idg	<b>2558</b>
<b>085°</b>	TDZE	<b>351</b>
	Apt Elev	<b>351</b>

# RNAV (GPS) RWY 8

LAKE ANNA (7W4)

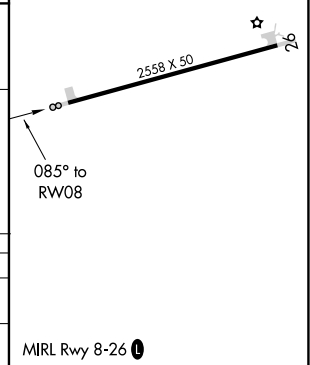
RNP APCH.	<p>Procedure NA at night. When local altimeter setting not received, use Louisa altimeter setting and increase all MDA 60 feet. Helicopter visibility reduction below 3 SM NA.</p>	<p>MISSED APPROACH: Climb to 3000 direct SHLBE and hold.</p>	
<p><b>AWOS-3</b> <b>120.775</b></p>			<p><b>LKU AWOS-3</b> <b>119.475</b></p>

<b>AWOS-3</b> <b>120.775</b>	<b>LKU AWOS-3</b> <b>119.475</b>	<b>POTOMAC APP CON</b> <b>126.75 307.2</b>	<b>CTAF</b> <b>122.9</b>
---------------------------------	-------------------------------------	-----------------------------------------------	-----------------------------



ELEV 351	TDZE 351
----------	----------

CATEGORY	A	B	C	D
LNVA MDA	1360-3	1009 (1100-3)		NA
CIRCLING	1360-3	1009 (1100-3)		NA



NE-3, 27 JAN 2022 to 24 FEB 2022

NE-3, 27 JAN 2022 to 24 FEB 2022