

WAAS CH 97633 W11A	APP CRS 109°	Rwy Idg TDZE Apt Elev	3318 1172 1174
--	------------------------	-----------------------------	---

RNAV (GPS) RWY 11

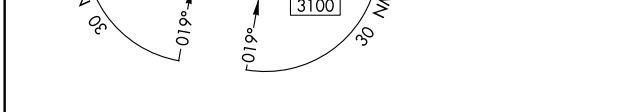
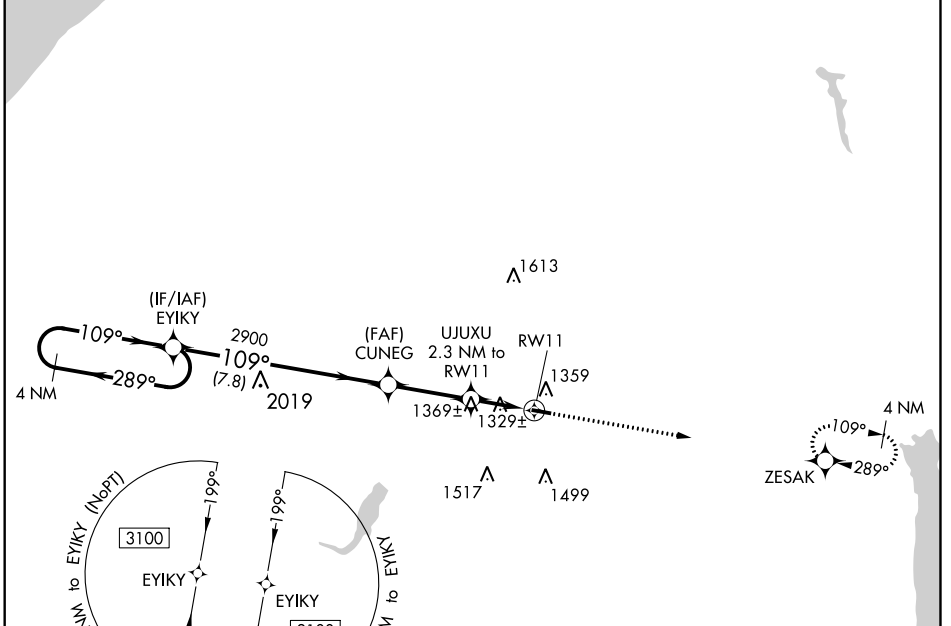
GEAUGA COUNTY (7G8)

NA DME/DME RNP-0.3 NA. Use Youngstown-Warren altimeter setting; when not received use Cuyahoga County altimeter setting and increase all MDA 40 feet, and increase LNAV and Circling Cat C visibility 1/4 mile. Procedure NA at night. Helicopter visibility reduction below 1 SM not authorized.

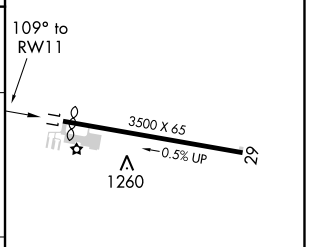
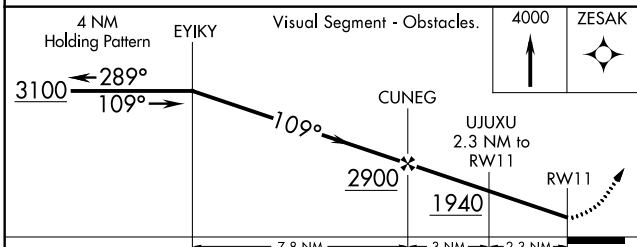
MISSED APPROACH:
Climb to 4000 direct ZESAK and hold.

CLEVELAND APP CON
125.35 354.025

UNICOM
123.0 (CTAF)



ELEV 1174	TDZE 1172
-----------	-----------



CATEGORY	A	B	C	D
LP MDA	1640-1	468 (500-1)	1640-1 3/8 468 (500-1 3/8)	NA
LNAV MDA	1680-1	508 (600-1)	1680-1 3/8 508 (600-1 3/8)	NA
C CIRCLING	1760-1	586 (600-1)	1900-2 726 (800-2)	NA

REIL Rwy 11 and 29 **0**
MIRL Rwy 11-29 **0**

EC-2: 06 DEC 2018 to 03 JAN 2019

EC-2: 06 DEC 2018 to 03 JAN 2019

WAAS CH 61233 W29A	APP CRS 289°	Rwy Idg TDZE 1167 Apt Elev 1174	3500 1167 1174
--	------------------------	---	---

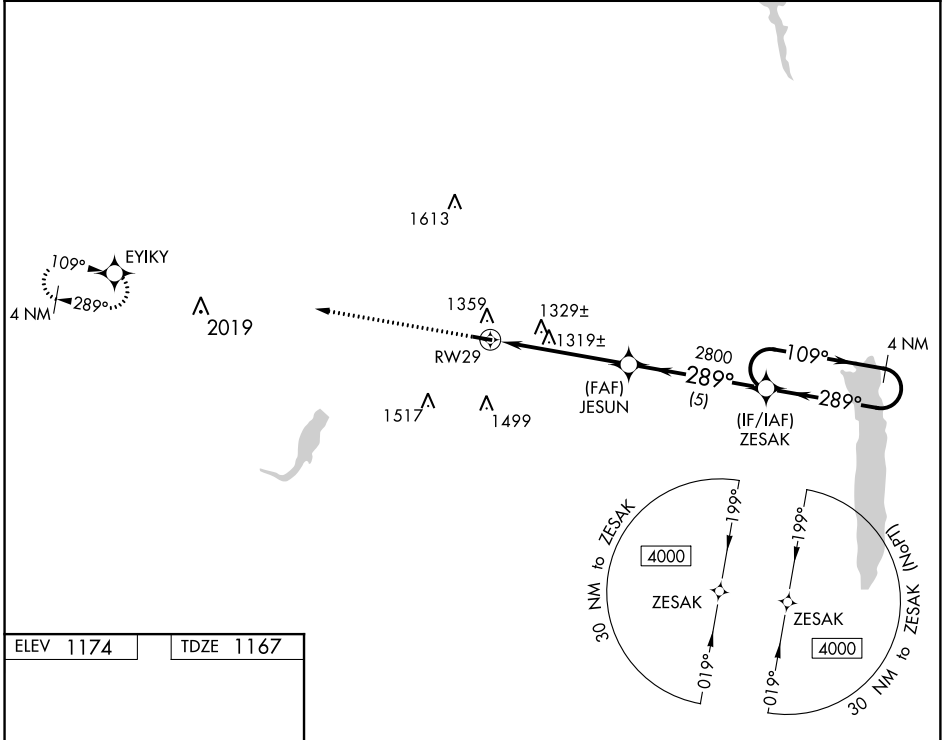
RNAV (GPS) RWY 29

GEAUGA COUNTY (7G8)

NA DME/DME RNP-0.3 NA. Use Youngstown-Warren altimeter setting; when not received use Cuyahoga County altimeter setting and increase all MDA 40 feet and increase LNAV Cat C visibility 1/8 mile and Circling Cat C visibility 1/4 mile. Procedure NA at night. Helicopter visibility reduction below 1 SM NA.

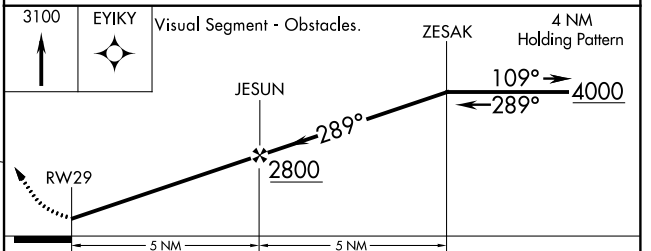
MISSED APPROACH:
Climb to 3100 direct EYIKY and hold.

CLEVELAND APP CON 125.35 354.025	UNICOM 123.0 (CTAF) 0
--	---------------------------------



ELEV 1174	TDZE 1167
-----------	-----------

REIL Rwy 11 and 29 **0**
MIRL Rwy 11-29 **0**



CATEGORY	A	B	C	D
LP MDA	1620-1	453 (500-1)	1620-1 3/8 453 (500-1 3/8)	NA
LNAV MDA	1640-1	473 (500-1)	1640-1 3/8 473 (500-1 3/8)	NA
C CIRCLING	1760-1	586 (600-1)	1900-2 726 (800-2)	NA

EC-2: 06 DEC 2018 to 03 JAN 2019

EC-2: 06 DEC 2018 to 03 JAN 2019

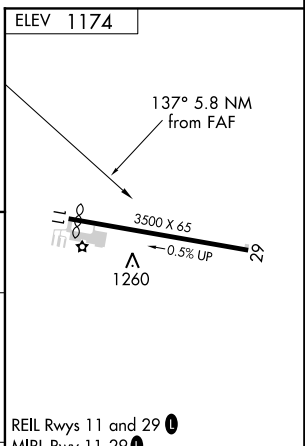
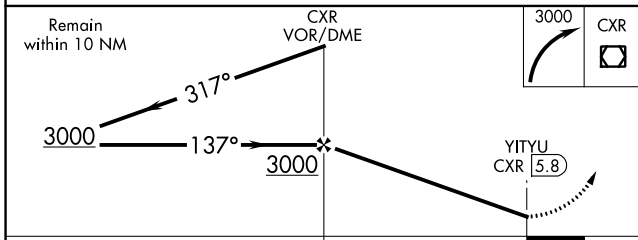
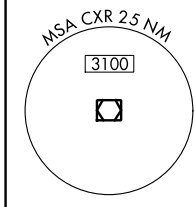
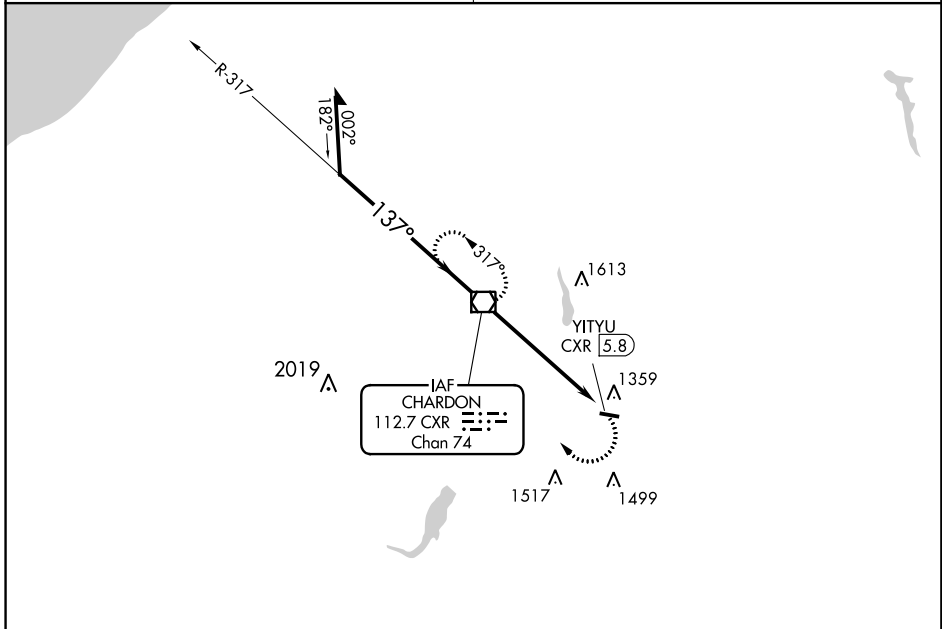
VOR/DME CXR 112.7 Chan 74	APP CRS 137°	Rwy Idg TDZE Apt Elev	N/A N/A 1174
---	------------------------	-----------------------------	---

VOR-A
GEAUGA COUNTY (7G8)

NA Use Youngstown-Warren altimeter setting; when not received use Cuyahoga County altimeter setting and increase all MDA 40 feet and increase Circling Cat C visibility ¼ mile. Procedure NA at night. Helicopter visibility reduction below 1 SM not authorized.

MISSED APPROACH:
Climbing right turn to 3000
direct CXR VOR/DME and hold.

CLEVELAND APP CON 125.35 354.025	UNICOM 123.0 (CTAF)
---	--------------------------------------



CATEGORY	A	B	C	D	FAF to MAP 5.8 NM					
CIRCLING	1880-1	706 (800-1)	1900-2 726 (800-2)	NA	Knots	60	90	120	150	180
					Min:Sec	5:48	3:52	2:54	2:19	1:56

EC-2: 06 DEC 2018 to 03 JAN 2019

EC-2: 06 DEC 2018 to 03 JAN 2019