

NDB	JUY	Rwy Idg	6000
264	APP CRS	TDZE	308
	272°	Apt Elev	310

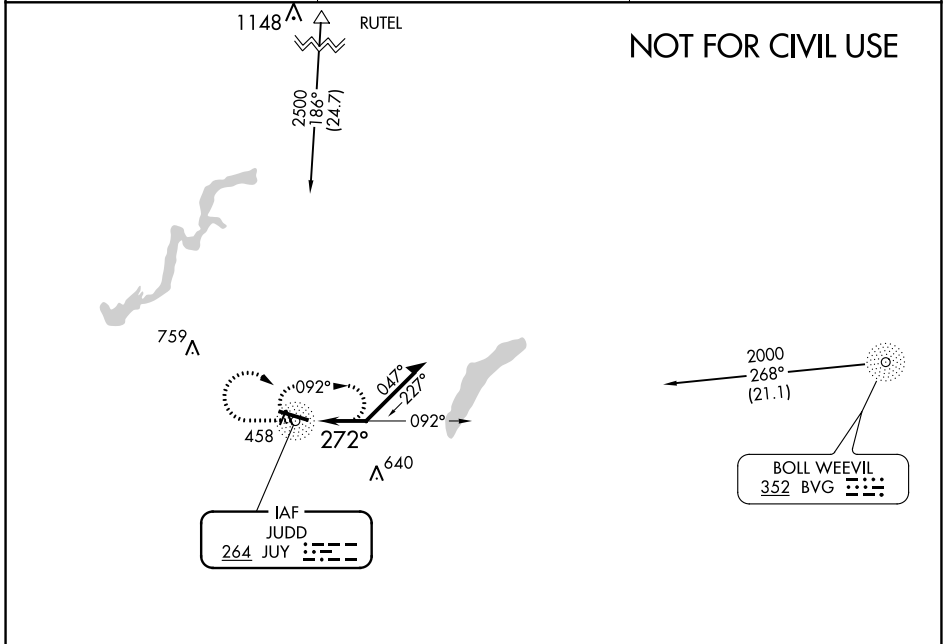
COPTER NDB RWY 29

SOUTH ALABAMA RGNL AT BILL BENTON FLD (79J)

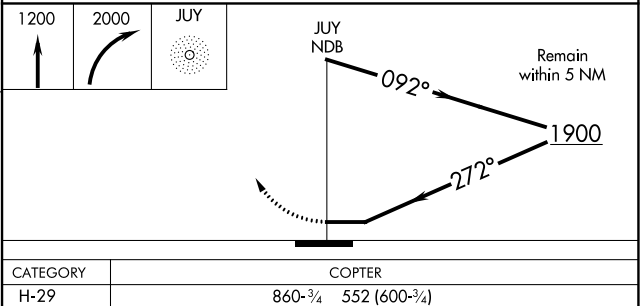
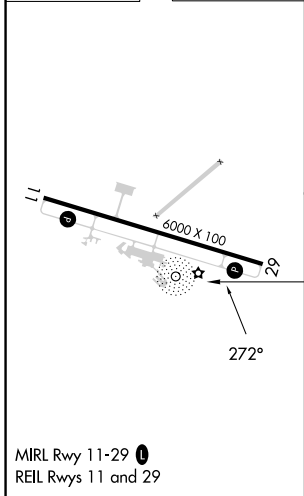
⚠ When local altimeter setting not received, use Cairns AAF (Fort Novosel) altimeter setting and increase all MDA 100 feet.

MISSED APPROACH: Climb to 1200 then climbing right turn to 2000 direct JUY NDB and hold.

ASOS 134.875	CAIRNS APP CON ★ 133.45 239.275	UNICOM 122.8 (CTAF) 0
------------------------	---	---------------------------------



ELEV	310	TDZE	308
------	-----	------	-----



SE-4, 22 FEB 2024 to 21 MAR 2024

SE-4, 22 FEB 2024 to 21 MAR 2024

NDB JUY 264	APP CRS 240°	Rwy Idg TDZE Apt Elev	N/A N/A 310
-----------------------	------------------------	-----------------------------	--

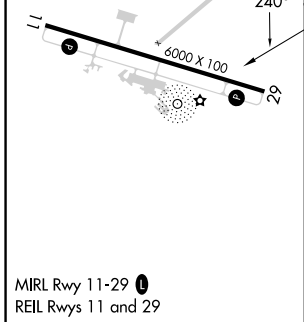
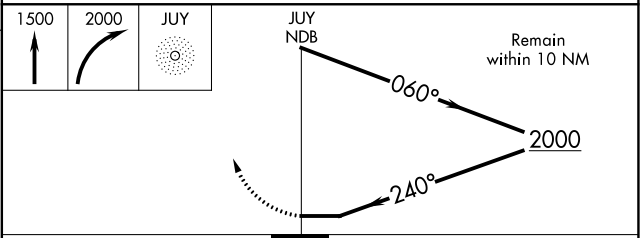
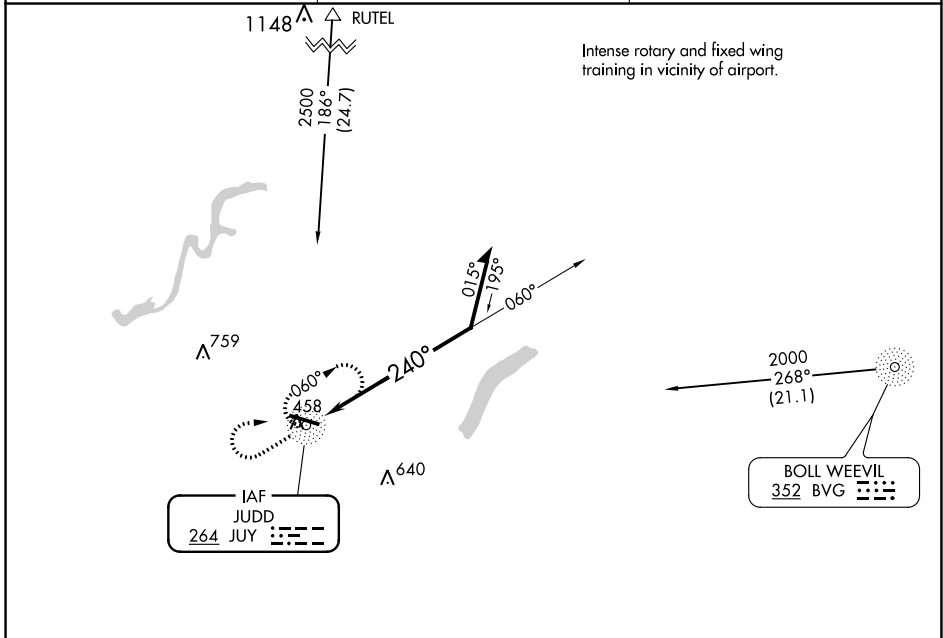
NDB-A

SOUTH ALABAMA RGNL AT BILL BENTON FIELD (79J)

⚠ When local altimeter setting not received, use Cairns AAF (Fort Novosel) altimeter setting and increase all MDA 100 feet.

⚠ MISSED APPROACH: Climb to 1500 then climbing right turn to 2000 direct JUY NDB and hold.

ASOS 134.875	CAIRNS APP CON ★ 133.45 239.275	UNICOM 122.8 (CTAF) 0
------------------------	---	---------------------------------



CATEGORY	A	B	C	D
CIRCLING	980-1	670 (700-1)	980-1¾ 670 (700-1¾)	980-2 670 (700-2)

NDB-A

SE-4, 22 FEB 2024 to 21 MAR 2024

SE-4, 22 FEB 2024 to 21 MAR 2024

WAAS CH 82600 W11A	APP CRS 109°	Rwy Idg TDZE Apt Elev	6000 310 310
--	------------------------	-----------------------------	---

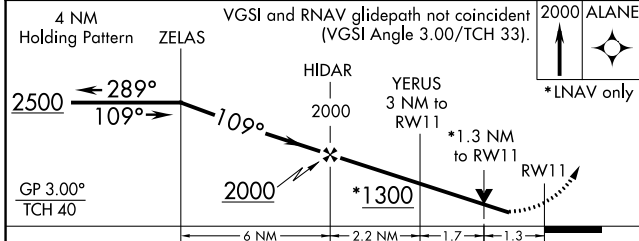
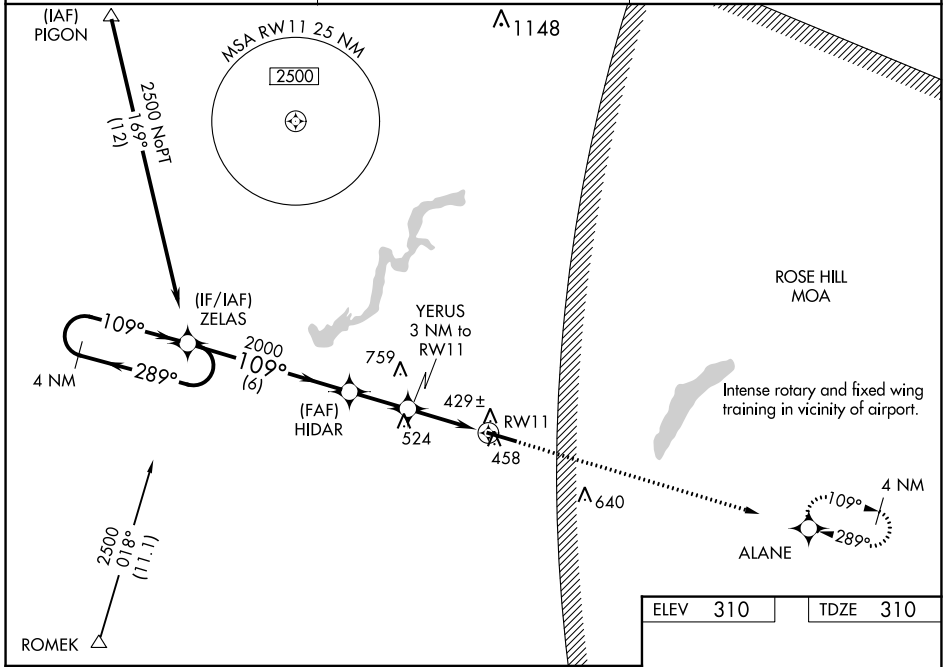
RNAV (GPS) RWY 11

SOUTH ALABAMA RGNL AT BILL BENTON FLD (79J)

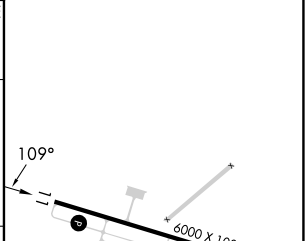
⚠ For uncompensated Baro-VNAV systems, LNAV/VNAV NA below -15°C (5°F) or above 54°C (130°F). DME/DME RNP-0.3 NA. Helicopter visibility reduction below ¼ SM NA. When local altimeter setting not received, use Cairns AAF (Fort Novosel) altimeter setting and increase all DA 82 feet, all MDA 100 feet. Increase all LPV and LNAV/VNAV visibilities ¾ mile all Cats, LNAV and Circling Cats C and D ½ mile. Baro-VNAV and VDP NA when using Cairns AAF (Fort Novosel) altimeter setting.

MISSED APPROACH: Climb to 2000 direct ALANE and hold.

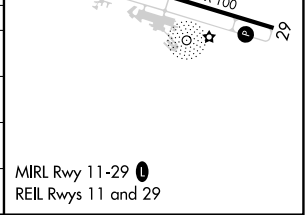
ASOS 134.875	CAIRNS APP CON ★ 133.45 239.275	UNICOM 122.8 (CTAF) 0
------------------------	---	---------------------------------



ELEV 310	TDZE 310
----------	----------



CATEGORY	A	B	C	D
LPV DA	615-1 305 (400-1)			
LNAV/VNAV DA	655-1½ 345 (400-1½)			
LNAV MDA	760-1	450 (500-1)	760-1¾	450 (500-1¾)
CIRCLING	820-1	510 (600-1)	860-1½	940-2 630 (700-2)



SE-4, 22 FEB 2024 to 21 MAR 2024

SE-4, 22 FEB 2024 to 21 MAR 2024

WAAS CH 60929 W29A	APP CRS 289°	Rwy Idg TDZE Apt Elev	6000 308 310
--	------------------------	-----------------------------	---

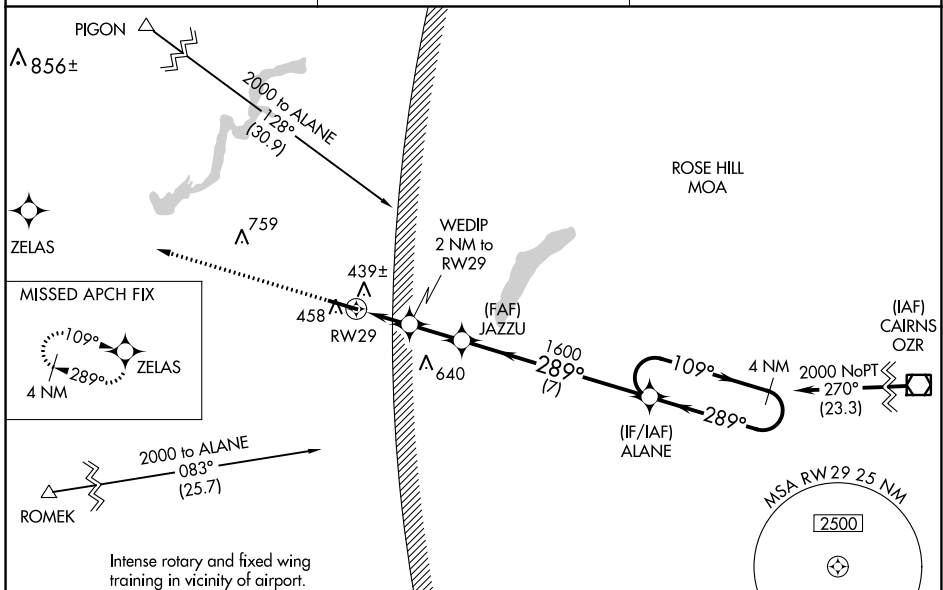
RNAV (GPS) RWY 29

SOUTH ALABAMA RGNL AT BILL BENTON FLD (79J)

⚠ For uncompensated Baro-VNAV systems, LNAV/VNAV NA below -15°C (5°F) or above 54°C (130°F). DME/DME RNP-0.3 NA. Helicopter visibility reduction below ¾ SM NA. When local altimeter setting not received, use Cairns AAF (Fort Novosel) altimeter setting and increase all DA 82 feet, all MDA 100 feet. Increase LPV and LNAV/VNAV visibilities ¾ mile, LNAV and Circling Cat C and D ¼ mile. Baro-VNAV and VDP NA when using Cairns AAF (Fort Novosel) altimeter setting.

MISSED APPROACH: Climb to 2500 direct ZELAS and hold.

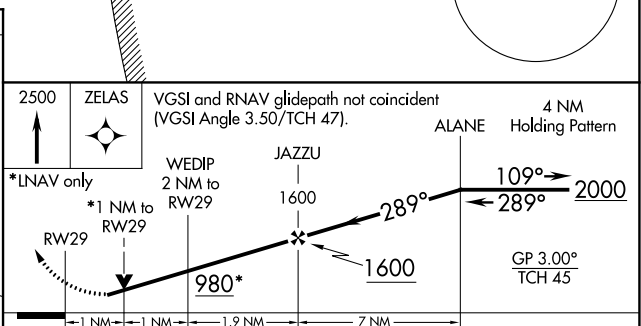
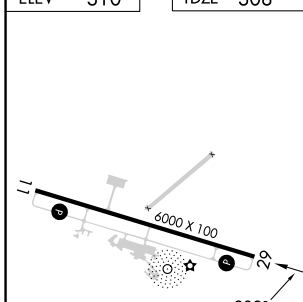
ASOS 134.875	CAIRNS APP CON ★ 133.45 239.275	UNICOM 122.8 (CTAF) 0
------------------------	---	---------------------------------



SE-4, 22 FEB 2024 to 21 MAR 2024

SE-4, 22 FEB 2024 to 21 MAR 2024

ELEV 310 TDZE 308



CATEGORY	A	B	C	D
LPV DA	630-1		322 (400-1)	
LNAV/VNAV DA	628-1		320 (400-1)	
LNAV MDA	720-1	412 (500-1)	720-1½	412 (500-1½)
CIRCLING	820-1	510 (600-1)	860-1½ 550 (600-1½)	940-2 630 (700-2)

MIRL Rwy 11-29
REIL Rws 11 and 29