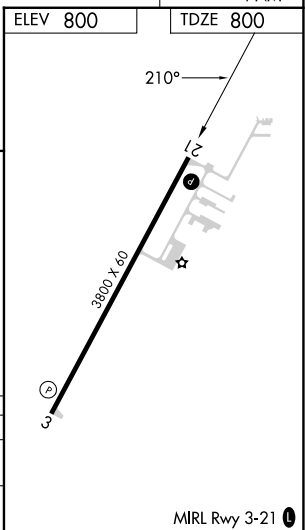
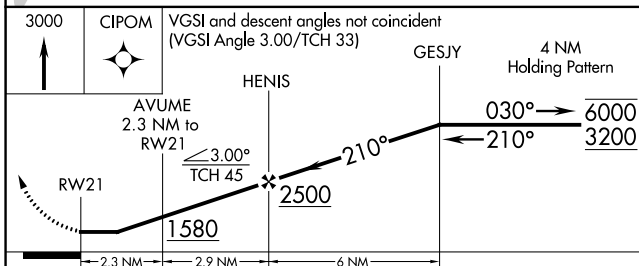
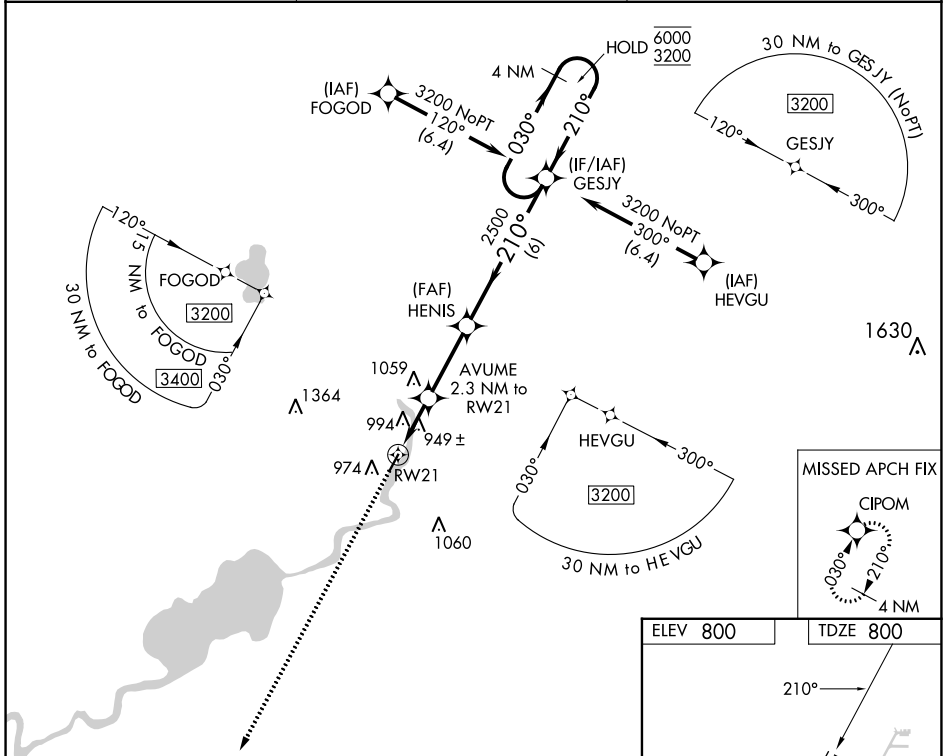


WAAS CH 45842 W21A	APP CRS 210°	Rwy Idg TDZE Apt Elev	3800 800 800
--	------------------------	-----------------------------	---

RNAV (GPS) RWY 21

FORT ATKINSON MUNI (61C)

RNP APCH.		MISSED APPROACH: Climb to 3000 direct CIPOM and hold.
<p>NA Rwy 21 helicopter visibility reduction below 3/4 SM NA. Use Watertown altimeter setting; when not received use Southern Wisconsin Rgnl altimeter setting and increase all MDA 20 feet, increase LP Cat C visibility 1/2 SM.</p>		
RVW AWOS-3 119.975	MADISON APP CON * 120.1 350.3	CTAF 122.9



CATEGORY	A	B	C	D
LP MDA	1240-1	440 (500-1)	1240-1 1/4 440 (500-1 1/4)	NA
LNAV MDA	1280-1	480 (500-1)	1280-1 3/8 480 (500-1 3/8)	NA

EC-3, 22 FEB 2024 to 21 MAR 2024

EC-3, 22 FEB 2024 to 21 MAR 2024

WAAS CH 40342 W03A	APP CRS 030°	Rwy Idg TDZE Apt Elev	3800 800 800
--	------------------------	-----------------------------	---

RNAV (GPS) RWY 3

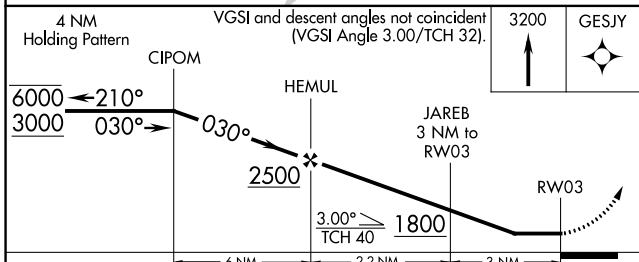
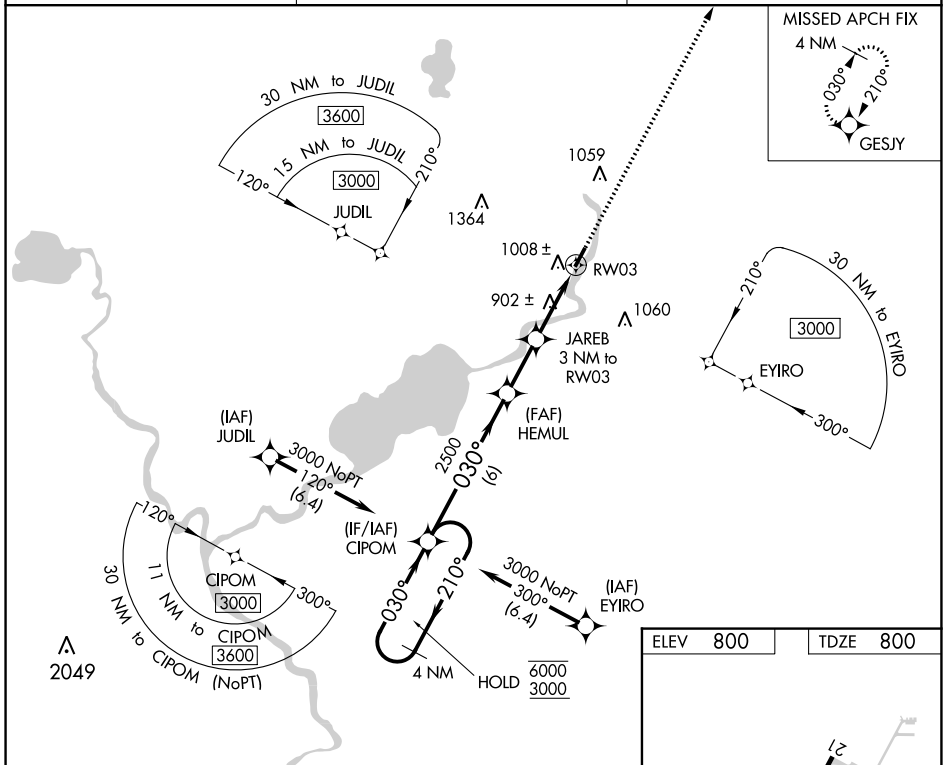
FORT ATKINSON MUNI (61C)

RNP APCH.

▼ Procedure NA at night. Rwy 3 helicopter visibility reduction below 1 SM NA.
 ▲NA Use Watertown altimeter setting; when not received use Southern Wisconsin Rgnl altimeter setting and increase all MDA 20 feet.

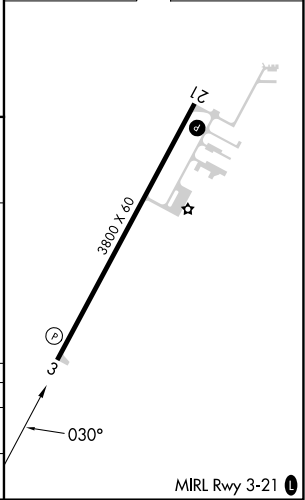
MISSED APPROACH: Climb to 3200 direct GESJY and hold.

RVW AWOS-3 119.975	MADISON APP CON * 120.1 350.3	CTAF 122.9
------------------------------	---	----------------------



ELEV 800	TDZE 800
----------	----------

CATEGORY	A	B	C	D
LP MDA	1200-1	400 (400-1)	1200-1½ 400 (400-1½)	NA
LNAV MDA	1300-1	500 (500-1)	1300-1¾ 500 (500-1¾)	NA



EC-3, 22 FEB 2024 to 21 MAR 2024

EC-3, 22 FEB 2024 to 21 MAR 2024

VOR/DME BAE 116.4 Chan 111	APP CRS 247°	Rwy Idg TDZE Apt Elev	N/A N/A 800
---	------------------------	--------------------------	--------------------------

VOR-A

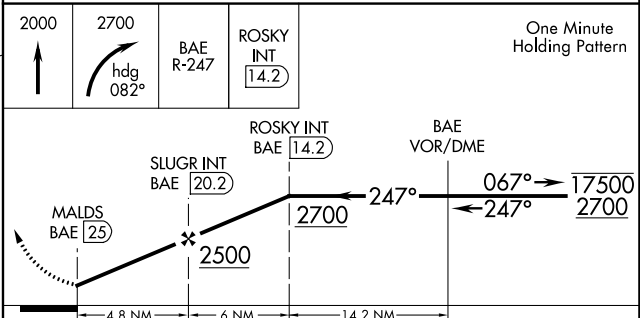
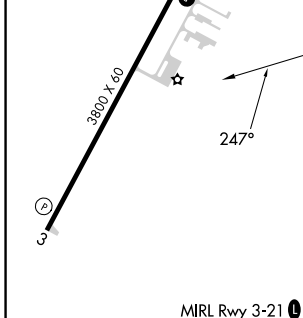
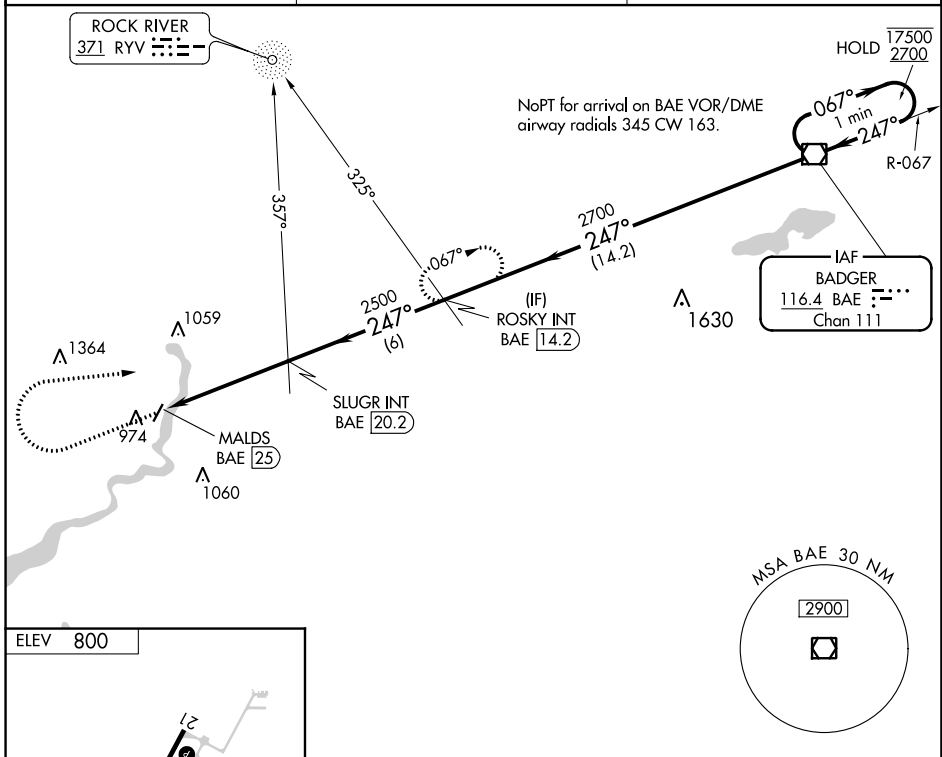
FORT ATKINSON MUNI (61C)

ADF or DME required.

▼ Circling to Rwy 3 NA at night. Rwy 3 helicopter visibility reduction below 1 SM NA. Use Watertown altimeter setting.

MISSED APPROACH: Climb to 2000 then climbing right turn to 2700 on heading 082° and on BAE VOR/DME R-247 to ROSKY INT/BAE 14.2 DME and hold.

RYV AWOS-3 119.975	MADISON APP CON * 120.1 350.3	CTAF 122.9
------------------------------	---	----------------------



FAF to MAP 4.8 NM					CATEGORY	A	B	C	D	
Knots	60	90	120	150	180	1440-1	640 (700-1)	1460-1 ³ / ₄	660 (700-1 ³ / ₄)	NA
Min:Sec	4:48	3:12	2:24	1:55	1:36	☑ CIRCLING				

EC-3, 22 FEB 2024 to 21 MAR 2024

EC-3, 22 FEB 2024 to 21 MAR 2024