

WAAS CH 56611 W23A	APP CRS 233°	Rwy Idg 4699 TDZE 431 Apt Elev 434
--	------------------------	---

RNAV (GPS) RWY 23

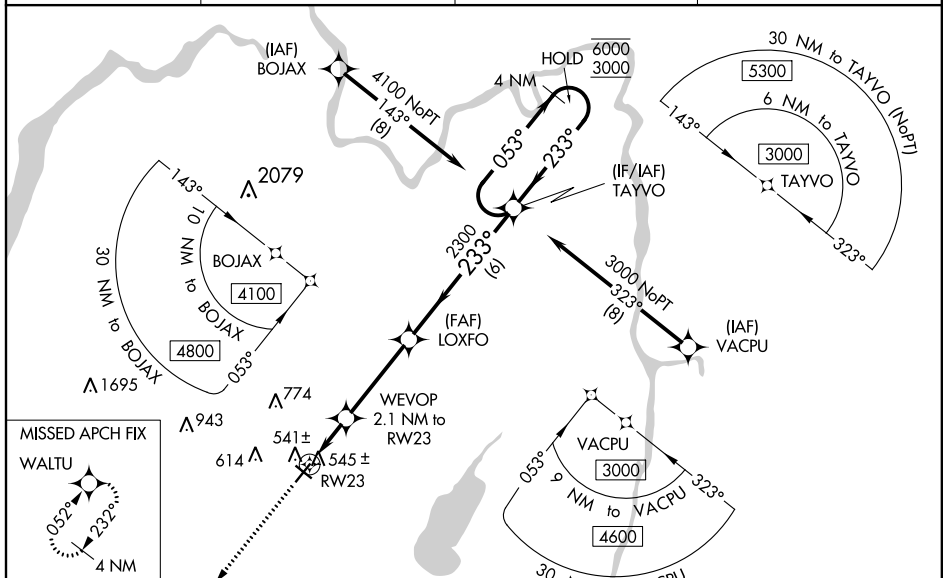
SARATOGA COUNTY (5B2)

RNP APCH

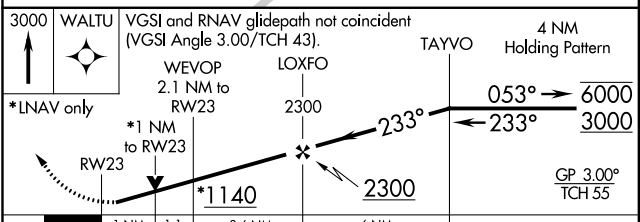
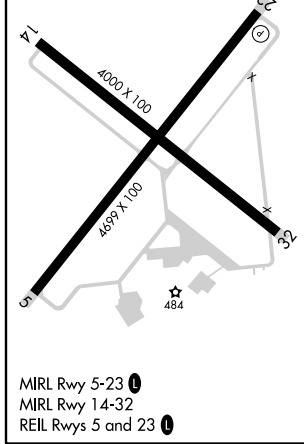
NA Baro-VNAV and VDP NA when using Albany altimeter setting. Rwy 23 helicopter visibility reduction below 3/4 SM NA. For uncompensated Baro-VNAV systems, LNAV/VNAV NA below -15°C or above 54°C. Circling NA at night. When local altimeter setting not received, use Albany altimeter setting and increase all DAs 63 feet and MDAs 80 feet. Increase LPV and LNAV/VNAV all Cats visibility 1/8 SM, LNAV Cats C/D visibility 3/8 SM, and Circling Cat C visibility 1/4 SM.

MISSED APPROACH: Climb to 3000 direct WALTU and hold.

AWOS-3 132.025	ALBANY APP CON 118.05 263.075	CLNC DEL (GCO) 118.125	UNICOM 123.075 (CTAF) 0
--------------------------	---	----------------------------------	-----------------------------------



ELEV 434	TDZE 431
-----------------	-----------------



CATEGORY	A	B	C	D
LPV DA		698-7/8	267 (300-7/8)	
LNAV/VNAV DA		706-7/8	275 (300-7/8)	
LNAV MDA		800-1	369 (400-1)	
CIRCLING	980-1 546 (600-1)	1080-1 646 (700-1)	1140-2 706 (800-2)	1340-3 906 (1000-3)

NE-2, 19 MAY 2022 to 16 JUN 2022

NE-2, 19 MAY 2022 to 16 JUN 2022

APP CRS	Rwy Idg	4699
052°	TDZE	434
	Apt Elev	434

RNAV (GPS) RWY 5

SARATOGA COUNTY (5B2)

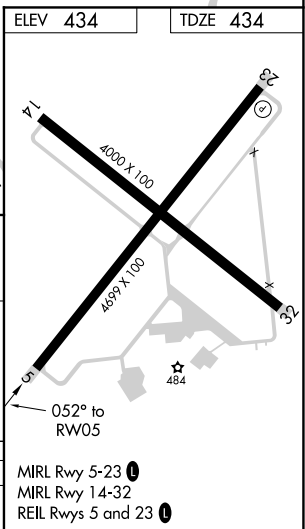
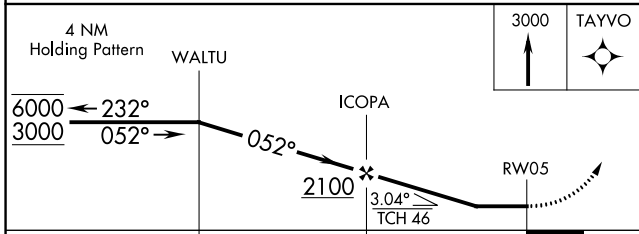
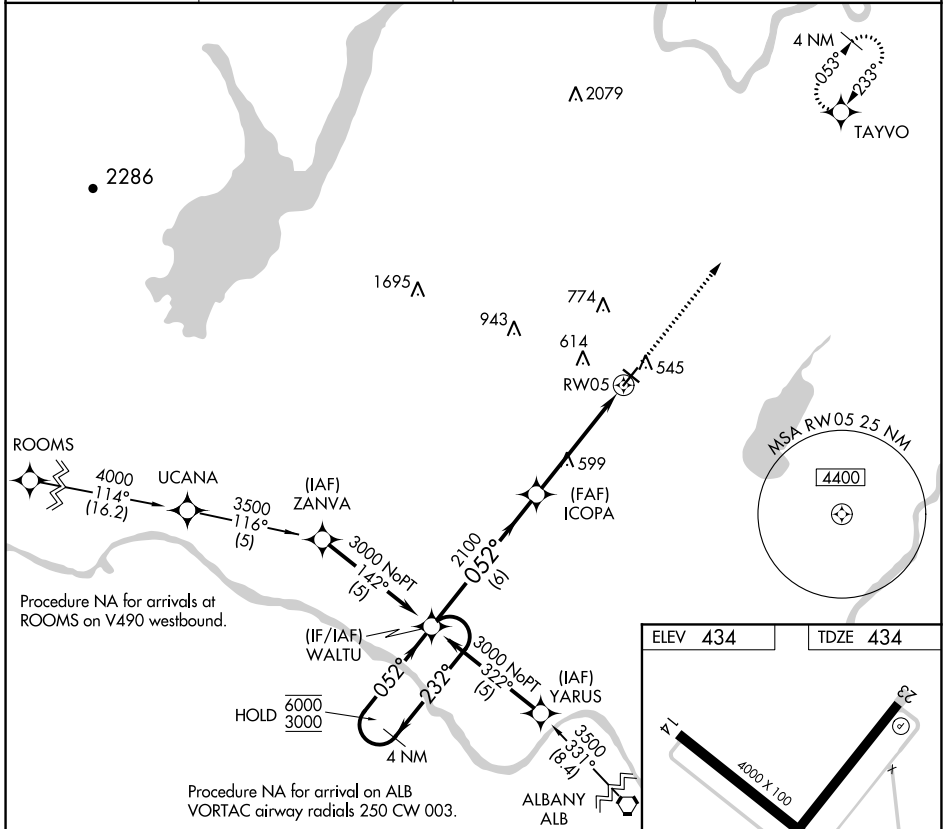
RNP APCH.

▽ Procedure NA at night. Rwy 5 helicopter visibility reduction below 1 SM NA.

▲ NA When local altimeter setting not received, use Albany altimeter setting and increase all MDAs 80 feet and LNAV Cat C/D visibilities 1/8 SM.

MISSED APPROACH: Climb to 3000 direct TAYVO and hold.

AWOS-3 132.025	ALBANY APP CON 118.05 263.075	CLNC DEL (GCO) 118.125	UNICOM 123.075 (CTAF) 0
--------------------------	---	----------------------------------	-----------------------------------



CATEGORY	A	B	C	D
LNAV MDA	860-1	426 (500-1)	860-1 1/4	426 (500-1 1/4)

NE-2, 19 MAY 2022 to 16 JUN 2022

NE-2, 19 MAY 2022 to 16 JUN 2022

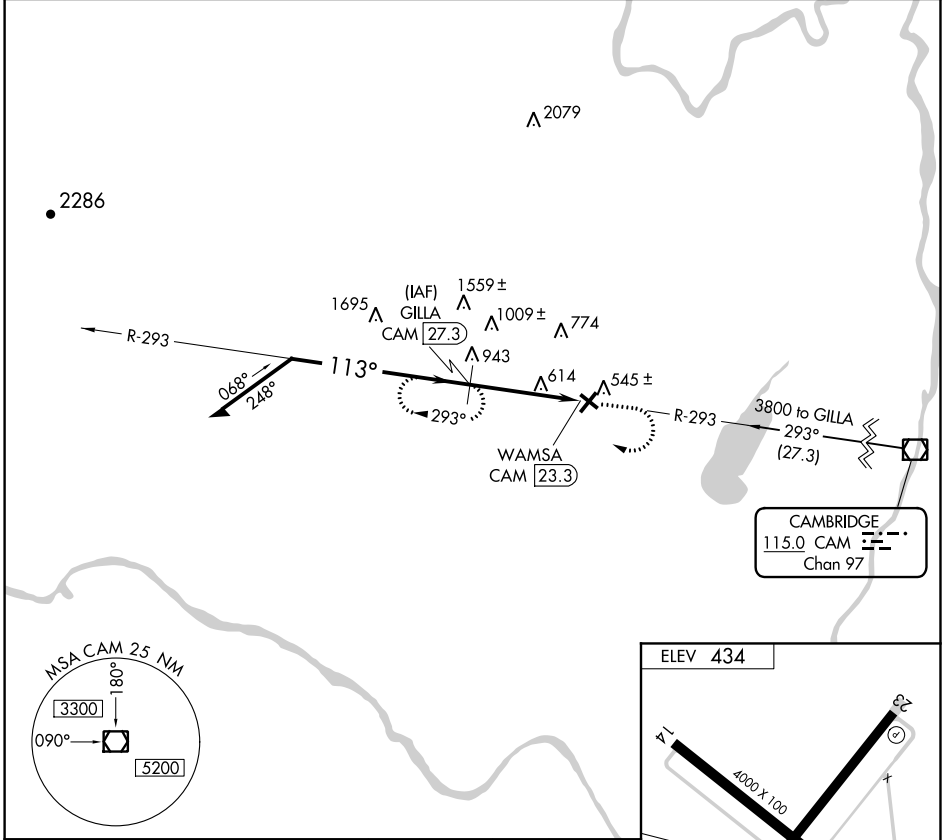
VOR/DME CAM 115.0 Chan 97	APP CRS 113°	Rwy ldg TDZE Apt Elev	N/A N/A 434
---	------------------------	-----------------------------	--

VOR/DME-A
SARATOGA COUNTY (5B2)

NA When local altimeter setting not received use Albany altimeter setting and increase all MDA 80 feet, and Cat A, C and D visibility ¼ mile. Night landing: 5, 14, 32 NA. Helicopter visibility reduction below 1 SM NA.

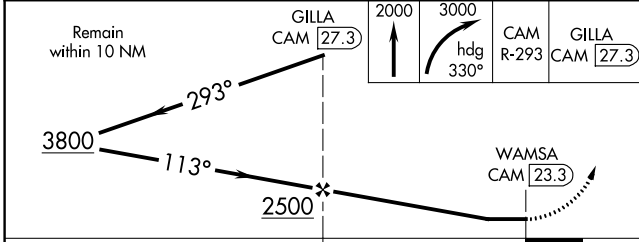
MISSED APPROACH: Climb to 2000 then climbing right turn to 3000 via heading 330° and CAM VOR/DME R-293 to GILLA/CAM 27.3 DME and hold.

AWOS-3 132.025	ALBANY APP CON 118.05 263.075	CLNC DEL (GCO) 118.125	UNICOM 123.075(CTAF) 0
--------------------------	---	----------------------------------	----------------------------------

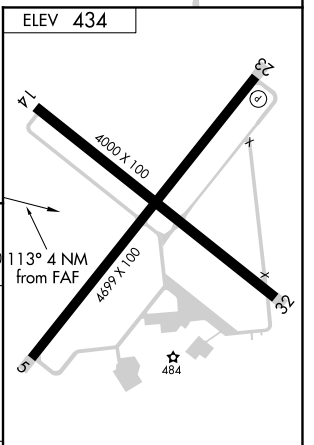


NE-2, 19 MAY 2022 to 16 JUN 2022

NE-2, 19 MAY 2022 to 16 JUN 2022



CATEGORY	A	B	C	D
CIRCLING	1260-1 826 (900-1)	1260-1¼ 826 (900-1¼)	1260-2½ 826 (900-2½)	1260-2¾ 826 (900-2¾)



MIRL Rwy 5-23 0
MIRL Rwy 14-32
REIL Rwy 5 and 23 0