

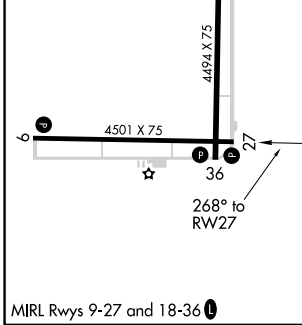
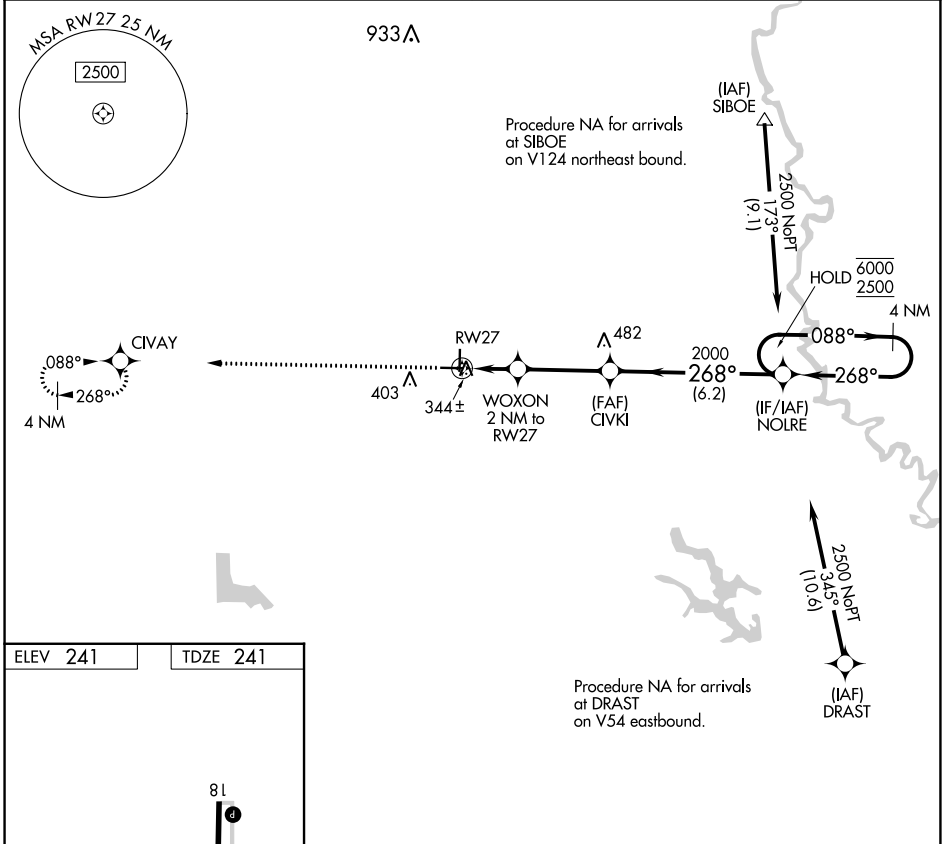
APP CRS	Rwy Idg	4501
268°	TDZE	241
	Apt Elev	241

RNAV (GPS) RWY 27

CARLISLE MUNI (4M3)

RNP APCH.		MISSED APPROACH: Climb to 2500 direct CIVAY and hold.	
Procedure NA at night. Rwy 27 helicopter visibility reduction below 1 SM NA.			

AWOS-2 119.275	LITTLE ROCK APP CON 135.4 353.6	CLNC DEL 135.4	UNICOM 122.8 (CTAF) 1
--------------------------	---	--------------------------	--



2500	CIVAY	NOLRE 4 NM Holding Pattern	
↑	✧	WOXON 2 NM to RWY 27	81 6000
		CIVKI	← 268° 2500
		TCH 47 2.98°	
		2000	
		920	
		← 2 NM	← 3.3 NM
		← 6.2 NM	
CATEGORY	A	B	C D
LNAV MDA	640-1	399 (400-1)	NA

SC-1, 22 FEB 2024 to 21 MAR 2024

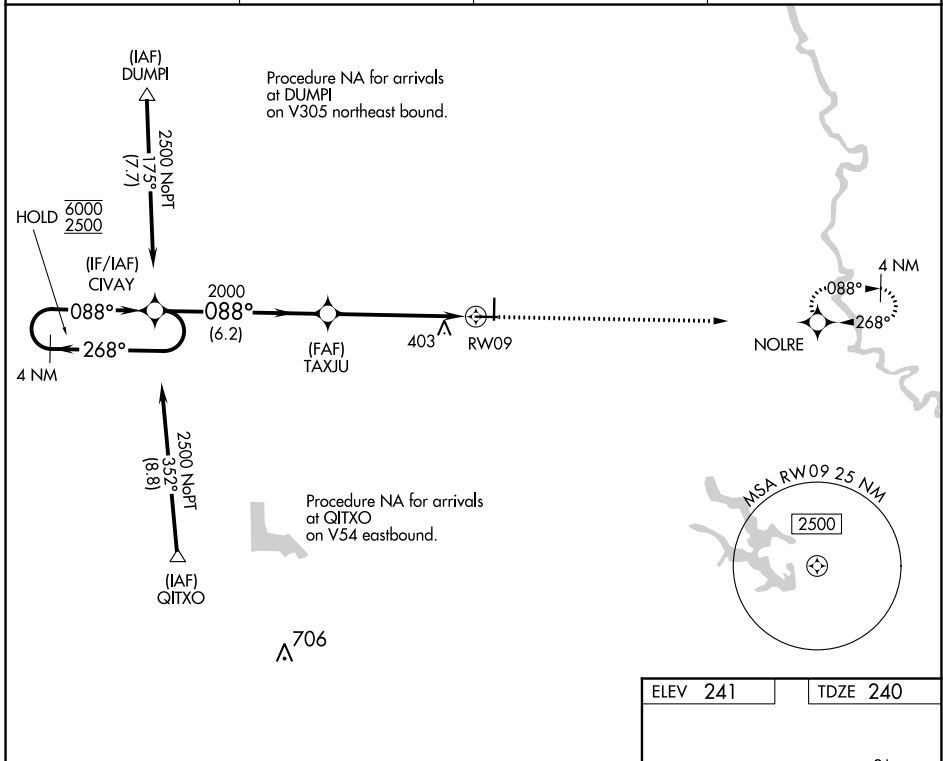
SC-1, 22 FEB 2024 to 21 MAR 2024

WAAS CH 93918 W09A	APP CRS 088°	Rwy Idg TDZE Apt Elev	4501 240 241
--	------------------------	-----------------------------	---

RNAV (GPS) RWY 9

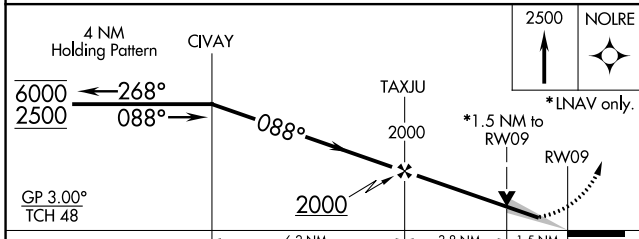
CARLISLE MUNI (4M3)

RNP APCH. Baro-VNAV NA.		MISSED APPROACH: Climb to 2500 direct NOLRE and hold.	
AWOS-2 119.275	LITTLE ROCK APP CON 135.4 353.6	CLNC DEL 135.4	UNICOM 122.8 (CTAF)

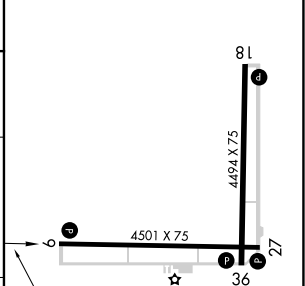


SC-1, 22 FEB 2024 to 21 MAR 2024

SC-1, 22 FEB 2024 to 21 MAR 2024



ELEV 241	TDZE 240
----------	----------



CATEGORY	A	B	C	D
LPV DA	526-1 286 (300-1)			NA
LNAV/VNAV DA	788-2 548 (600-2)			NA
LNAV MDA	780-1 540 (600-1)			NA

MRL Rwy 9-27 and 18-36