

WAAS CH 42734 W10A	APP CRS 099°	Rwy Idg TDZE Apt Elev	5000 182 185
--	------------------------	-----------------------------	---

RNAV (GPS) RWY 10

QUITMAN BROOKS COUNTY (4J5)

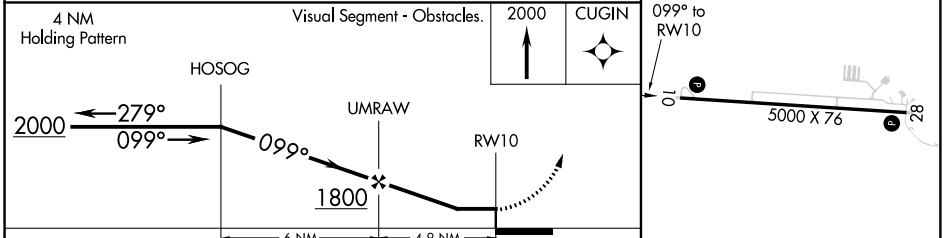
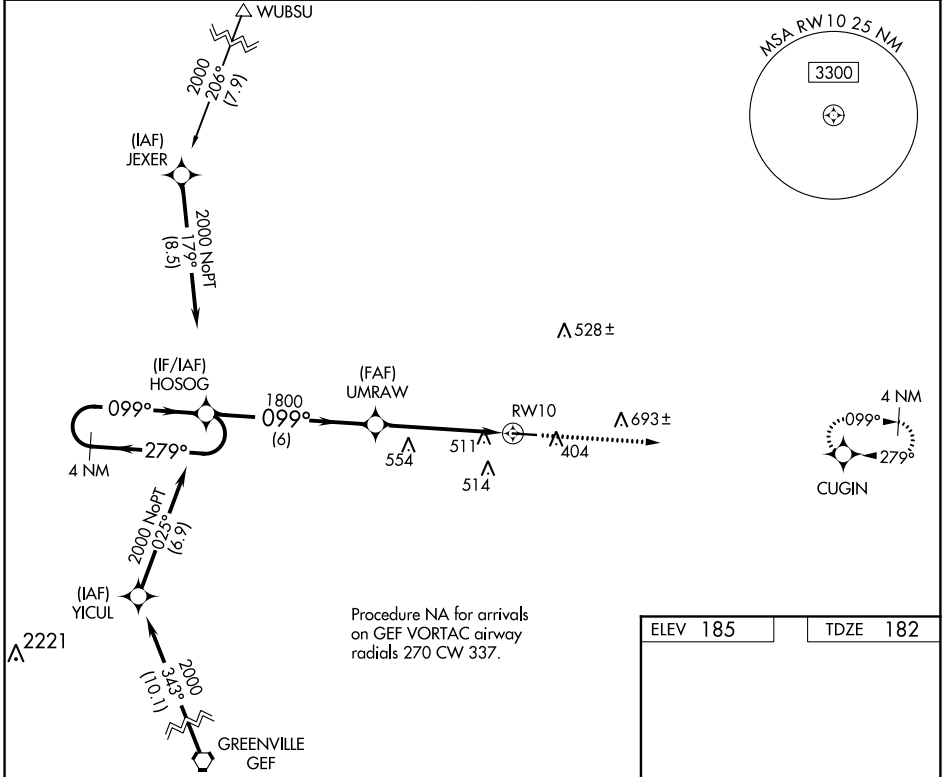
RNP APCH.

▼ Procedure NA at night. Rwy 10 helicopter visibility reduction below 1 SM NA.
 ▲NA Use Valdosta altimeter setting; when not received, use Thomasville altimeter setting and increase all MDA 20 feet; increase LP Cat C visibility 1/8 SM.

MISSED APPROACH: Climb to 2000 direct CUGIN and hold.

VALDOSTA APP CON* **126.6**

CTAF **122.9**



ELEV 185		TDZE 182		
CATEGORY	A	B	C	D
LP MDA	740-1	558 (600-1)	740-1 5/8 558 (600-1 5/8)	NA
LNAV MDA	820-1	638 (700-1)	820-1 7/8 638 (700-1 7/8)	NA

MIRL Rwy 10-28

SE-4, 16 JUL 2020 to 13 AUG 2020

SE-4, 16 JUL 2020 to 13 AUG 2020

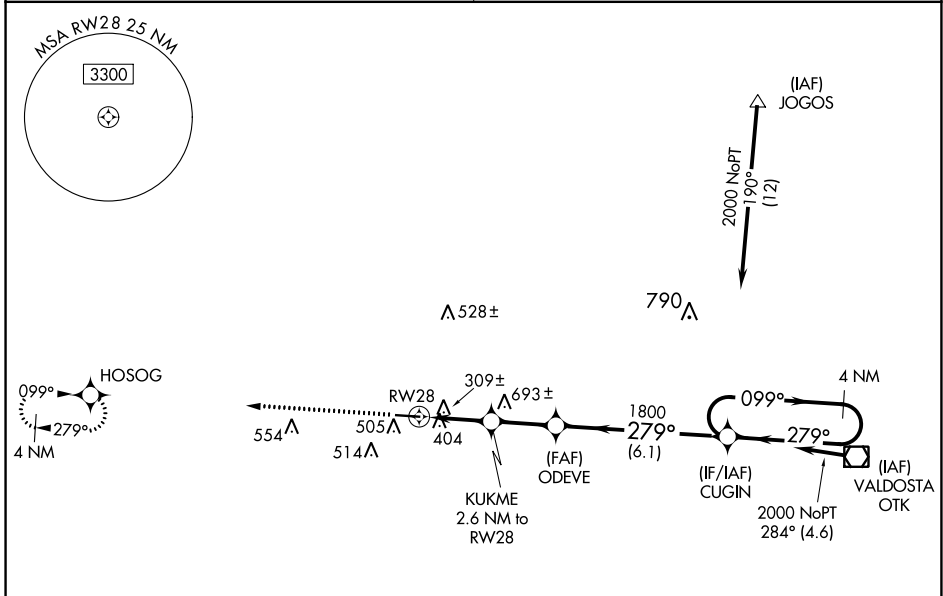
WAAS CH 99534 W28A	APP CRS 279°	Rwy Idg TDZE Apt Elev	5000 185 185
--	------------------------	-----------------------------	---

RNAV (GPS) RWY 28

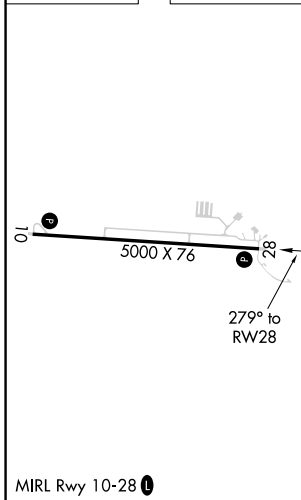
QUITMAN BROOKS COUNTY (4J5)

RNP APCH.	MISSED APPROACH: Climb to 2000 direct HOSOG and hold.
<p>Procedure NA at night. Rwy 28 helicopter visibility reduction below 1 SM NA. Use Valdosta altimeter setting; when not received, use Thomasville altimeter setting and increase all MDA 20 feet; increase LP and LNAV Cat C visibility 1/8 SM.</p>	

VALDOSTA APP CON ★ 126.6	CTAF 122.9
------------------------------------	----------------------



ELEV 185	TDZE 185
----------	----------



2000	HOSOG	Visual Segment - Obstacles.	4 NM Holding Pattern	
0	5000 X 76	RWY 28	ODEVE	
1060	1800	KUKME 2.6 NM to RWY 28	CUGIN	
279°	099°	2.6 NM	2.3 NM	
279°	279°	6.1 NM		
CATEGORY	A	B	C	D
LP MDA	600-1	415 (500-1)	600-1 1/8 415 (500-1 1/8)	NA
LNAV MDA	860-1	675 (700-1)	860-1 1/8 675 (700-1 1/8)	NA

SE-4, 16 JUL 2020 to 13 AUG 2020

SE-4, 16 JUL 2020 to 13 AUG 2020