

WAAS CH <b>63123</b> <b>W10A</b>	APP CRS <b>104°</b>	Rwy ldg <b>5504</b> TDZE <b>1191</b> Apt Elev <b>1191</b>
--	------------------------	---

# RNAV (GPS) RWY 10

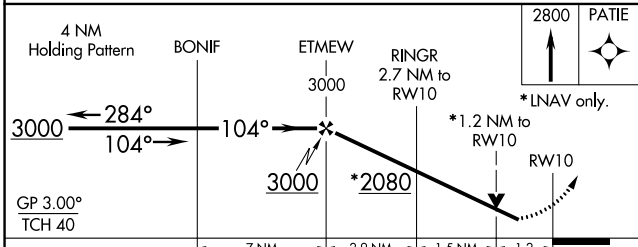
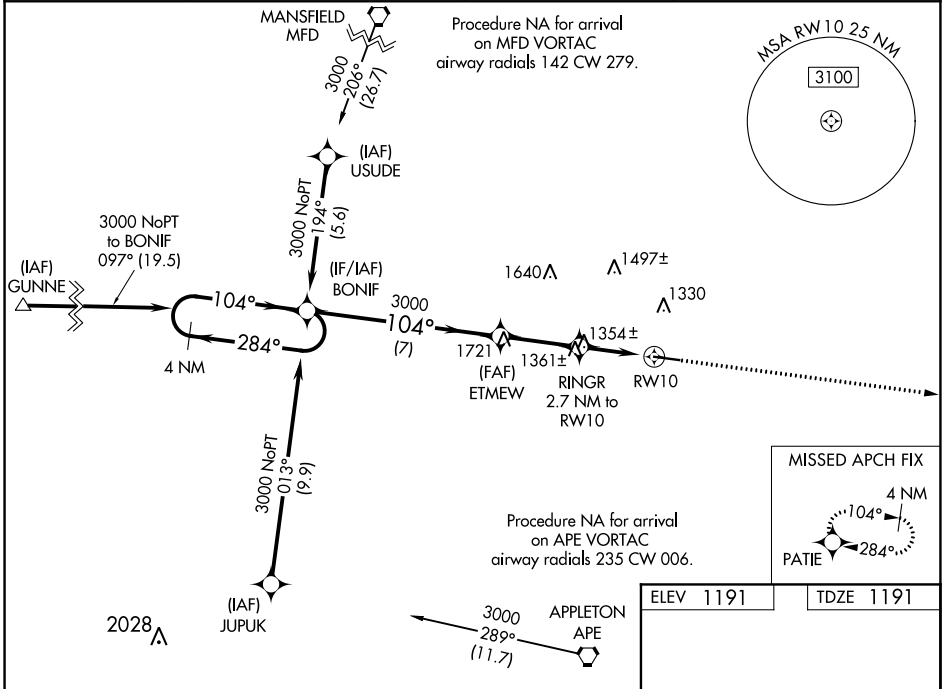
KNOX COUNTY (4I3)

RNP APCH.

Baro-VNAV and VDP NA when using Newark altimeter setting. For uncompensated Baro-VNAV systems, LNAV/VNAV NA below -17°C (2°F) or above 36°C (96°F). When local altimeter setting not received, use Newark altimeter setting and increase all DA 86 feet and all MDA 100 feet and increase LPV all Cats, LNAV/VNAV all Cats, LNAV Cat C and D visibility ¼ mile. Rwy 10 helicopter visibility reduction below ¼ SM NA.

MISSED APPROACH: Climb to 2800 direct PATIE and hold.

AWOS-3 <b>126.05</b>	COLUMBUS APP CON <b>125.95 317.775</b>	CLNC DEL <b>119.45</b>	UNICOM <b>123.05 (CTAF)</b>
-------------------------	---	---------------------------	--------------------------------



ELEV 1191	TDZE 1191
-----------	-----------

5504 X 100

104° to RW10

MIRL Rwy 10-28

REIL Rwy 10 and 28

EC-2, 02 DEC 2021 to 30 DEC 2021

EC-2, 02 DEC 2021 to 30 DEC 2021

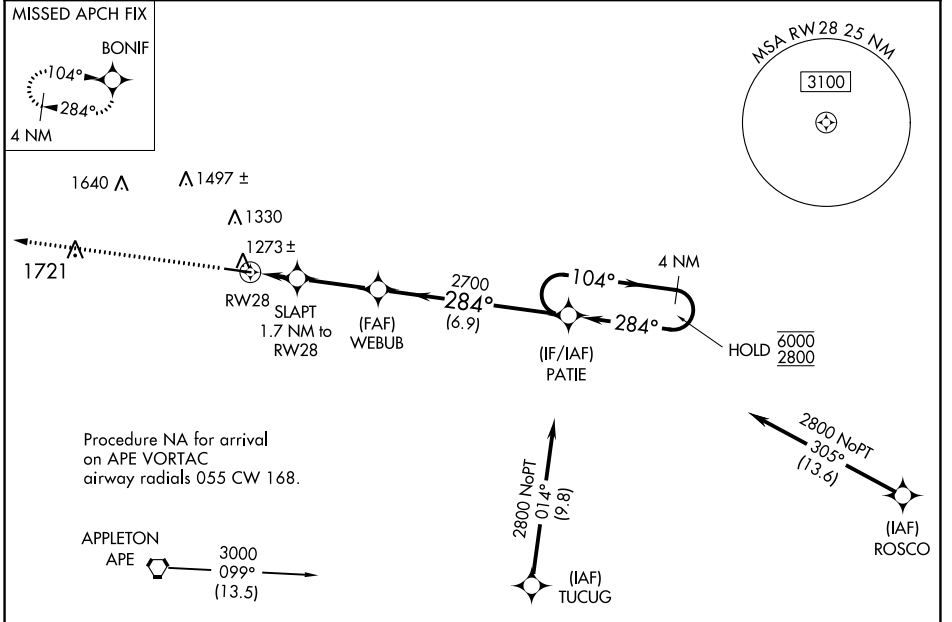
WAAS CH <b>69423</b> <b>W28A</b>	APP CRS <b>284°</b>	Rwy Idg TDZE Apt Elev	<b>5504</b> <b>1189</b> <b>1191</b>
--	------------------------	-----------------------------	---

# RNAV (GPS) RWY 28

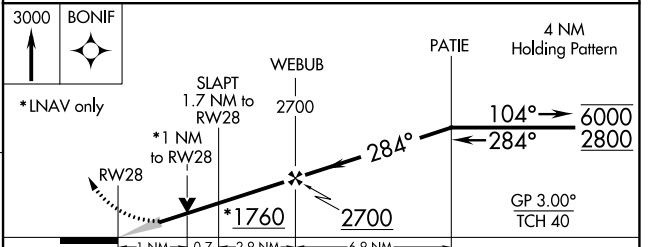
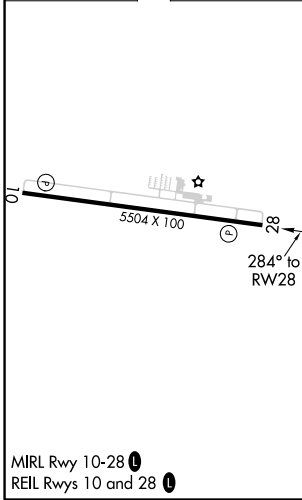
KNOX COUNTY (4I3)

RNP APCH. ▼ For uncompensated Baro-VNAV systems, LNAV/VNAV NA below -17°C or above 36°C.		MISSED APPROACH: Climb to 3000 direct BONIF and hold.	
---	--	---	--

AWOS-3 <b>126.05</b>	COLUMBUS APP CON <b>125.95 317.775</b>	CLNC DEL <b>119.45</b>	UNICOM <b>123.05 (CTAF) 0</b>
-------------------------	---	---------------------------	----------------------------------



ELEV 1191	TDZE 1189
-----------	-----------



CATEGORY	A	B	C	D
LPV DA		1389-1	200 (200-1)	
LNAV/VNAV DA		1439-1	250 (300-1)	
LNAV MDA		1540-1	351 (400-1)	

EC-2, 02 DEC 2021 to 30 DEC 2021

EC-2, 02 DEC 2021 to 30 DEC 2021

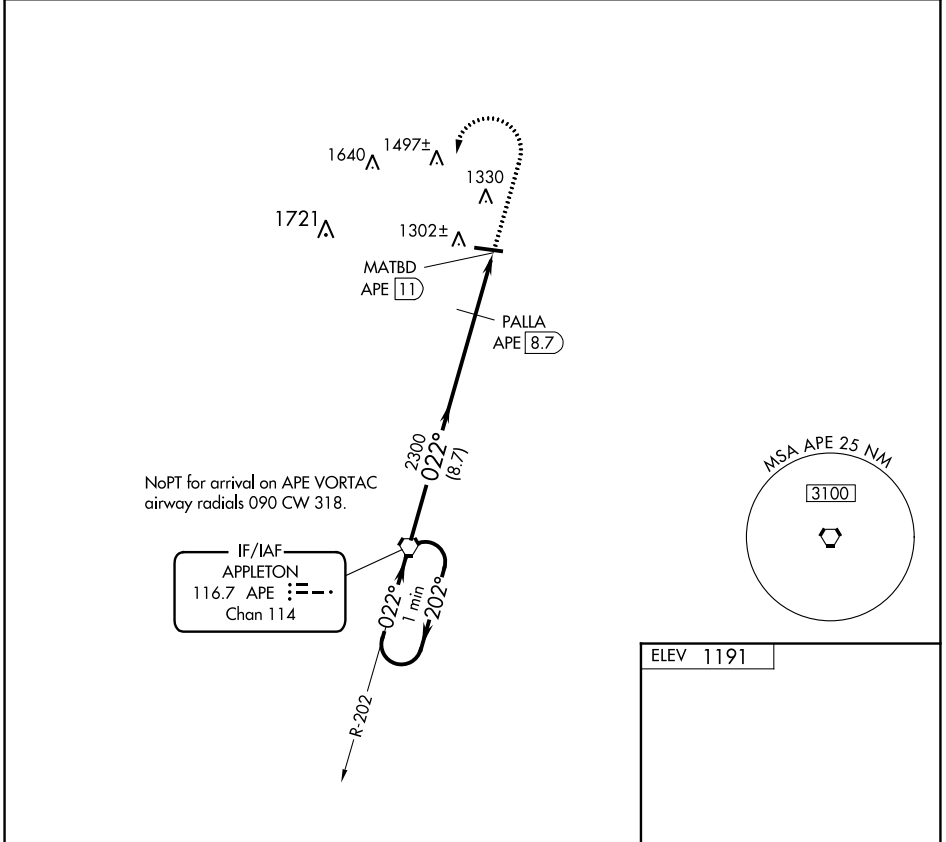
VORTAC APE <b>116.7</b> Chan <b>114</b>	APP CRS <b>022°</b>	Rwy Idg TDZE Apt Elev <b>1191</b>	<b>N/A</b> <b>N/A</b>
---	------------------------	---	--------------------------

# VOR-A

KNOX COUNTY (4I3)

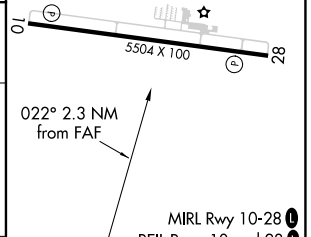
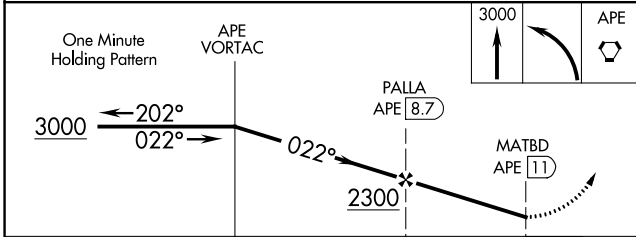
DME required.		MISSED APPROACH: Climb to 3000 then left turn direct APE VORTAC and hold.	
---------------	--	---	--

AWOS-3 <b>126.05</b>	COLUMBUS APP CON <b>125.95 317.775</b>	CLNC DEL <b>119.45</b>	UNICOM <b>123.05 (CTAF) 0</b>
-------------------------	---	---------------------------	----------------------------------



EC-2, 02 DEC 2021 to 30 DEC 2021

EC-2, 02 DEC 2021 to 30 DEC 2021



CATEGORY	A	B	C	D	FAF to MAP 2.3 NM					
CIRCLING	1660-1	469 (500-1)	1660-1½ 469 (500-1½)	1780-2 589 (600-2)	Knots	60	90	120	150	180
					Min:Sec	2:18	1:32	1:09	0:55	0:46