

# RNAV (GPS) RWY 25

MONROE COUNTY (4G5)

WAAS CH <b>65833</b> <b>W25A</b>	APP CRS <b>254°</b>	Rwy Idg TDZE Apt Elev	<b>3805</b> <b>1197</b> <b>1197</b>
--	------------------------	-----------------------------	---

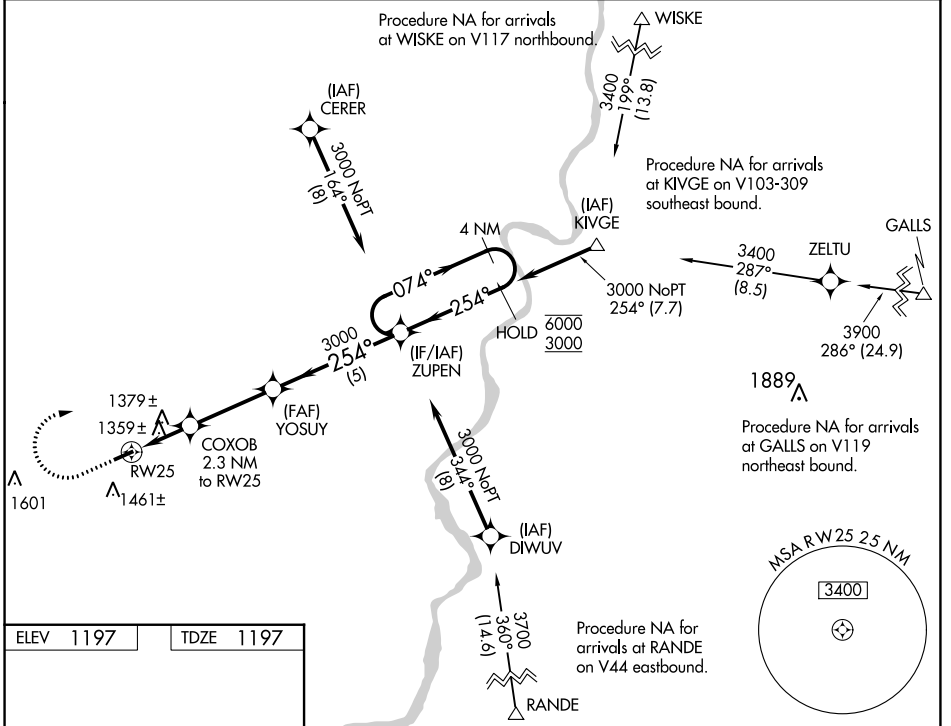
RNP APCH.

**NA** Rwy 25 helicopter visibility reduction below 1 SM NA. Use Wheeling Ohio Co, WV altimeter setting; when not received use Parkersburg, WV altimeter setting and increase all MDA 60 feet; increase LP Cat C, LNAV Cat C and Circling Cat C visibility  $\frac{1}{4}$  SM. Procedure NA at night.

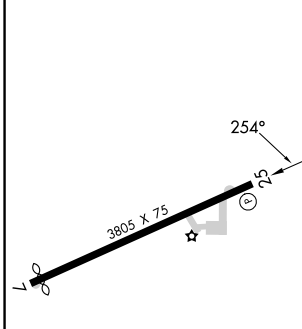
MISSED APPROACH: Climb to 1900 then climbing right turn to 3000 direct ZUPEN and hold.

CLEVELAND CENTER **126.95 239.3**

UNICOM **122.8 (CTAF)**



ELEV 1197	TDZE 1197
-----------	-----------



CATEGORY	A	B	C	D
LP MDA	1700-1	503 (600-1)	1700-1 $\frac{3}{8}$ 503 (600-1 $\frac{3}{8}$ )	NA
LNAV MDA	1720-1	523 (600-1)	1720-1 $\frac{1}{2}$ 523 (600-1 $\frac{1}{2}$ )	NA
<b>C</b> CIRCLING	1860-1	663 (700-1)	1860-1 $\frac{3}{4}$ 663 (700-1 $\frac{3}{4}$ )	NA

REIL Rwy 25 **1**  
MIRL Rwy 7-25 **1**

EC-2, 22 FEB 2024 to 21 MAR 2024

EC-2, 22 FEB 2024 to 21 MAR 2024

VOR/DME AIR	APP CRS	Rwy Idg	<b>3805</b>
<b>117.1</b>	<b>229°</b>	TDZE	<b>1197</b>
Chan <b>118</b>		Apt Elev	<b>1197</b>

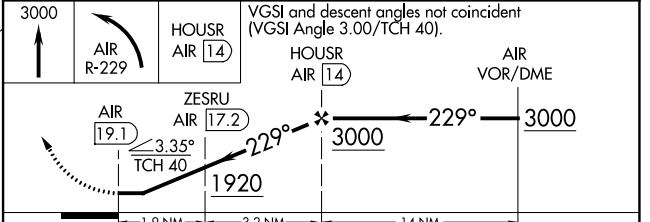
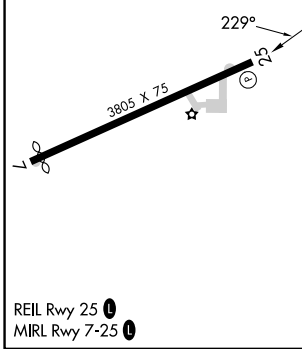
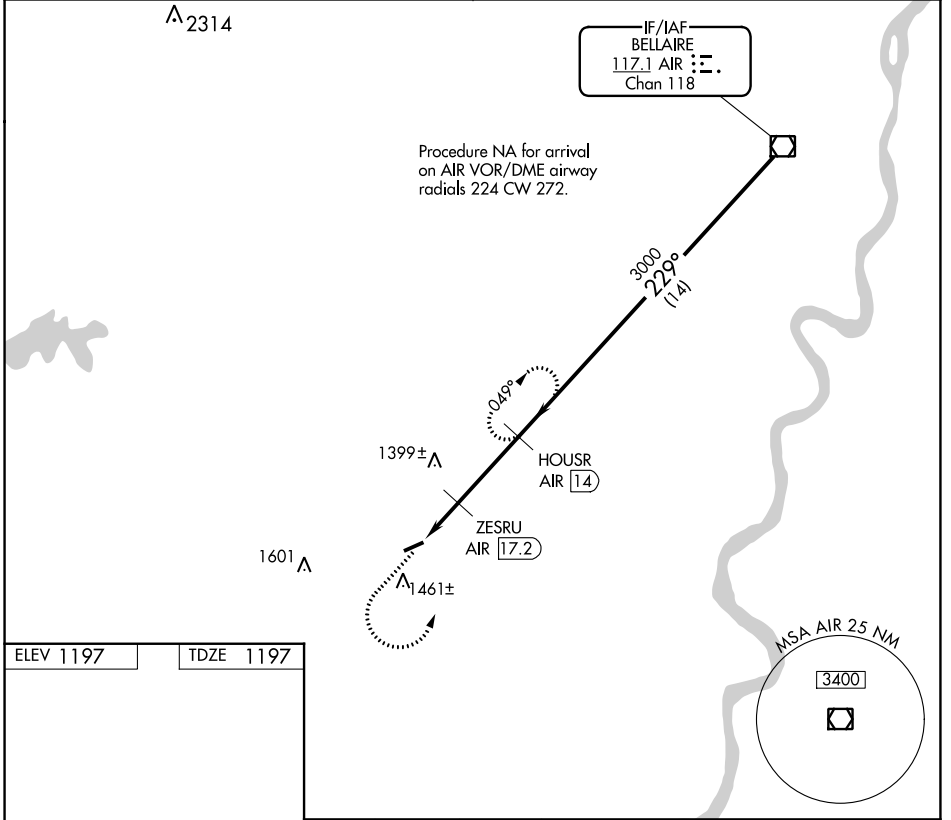
# VOR/DME RWY 25

MONROE COUNTY (4G5)

**▼** Use Wheeling Ohio Co, WV alimeter setting; when not received use Parkersburg, WV alimeter setting and increase all MDA 60 feet; increase S-25 Cat C visibility 1/8 mile and Circling Cat C visibility 1/4 mile. Procedure NA at night.  
**▲ NA** Rwy 25 helicopter visibility reduction below 1 SM NA.

MISSED APPROACH: Climb to 3000 then left turn on AIR VOR/DME R-229 to HOUSR/AIR 14 DME and hold.

CLEVELAND CENTER <b>126.95 239.3</b>	UNICOM <b>122.8 (CTAF) 0</b>
---	---------------------------------



CATEGORY	A	B	C	D
S-25	1740-1	543 (600-1)	1740-1 5/8 543 (600-1 5/8)	NA
<b>☐</b> CIRCLING	1860-1	663 (700-1)	1860-1 3/4 663 (700-1 3/4)	NA

EC-2, 22 FEB 2024 to 21 MAR 2024

EC-2, 22 FEB 2024 to 21 MAR 2024