

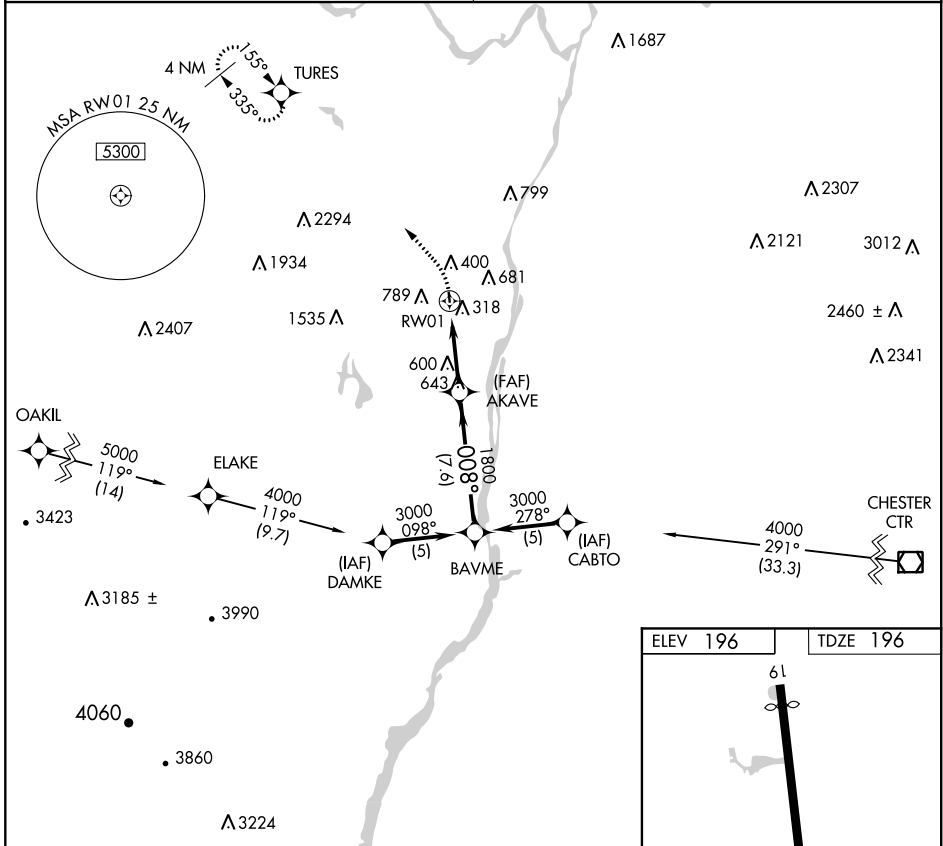
APP CRS	Rwy ldg	2703
008°	TDZE	196
	Apt Elev	196

RNAV (GPS) RWY 1

SOUTH ALBANY (4BØ)

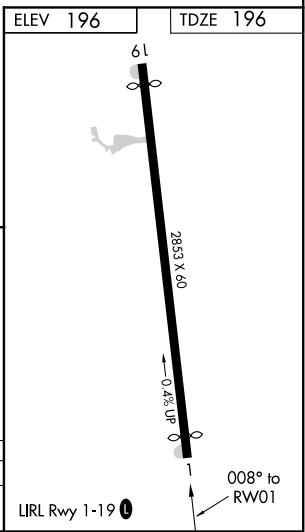
RNP APCH.	MISSED APPROACH: Climbing left turn to 3500 direct TURES WP and hold.
▼ Use Albany Intl altimeter setting. Procedure NA at night.	
▲ NA Rwy 1 helicopter visibility reduction below 1 SM NA.	

ALBANY APP CON 118.05 263.075	CTAF 122.9 0
---	------------------------

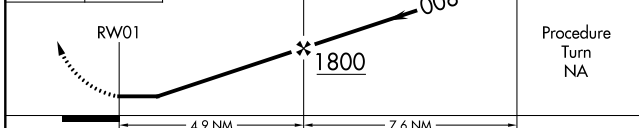


NE-2, 19 MAY 2022 to 16 JUN 2022

NE-2, 19 MAY 2022 to 16 JUN 2022



3500	TURES	Visual Segment - Obstacles.	BAYME
------	-------	-----------------------------	-------



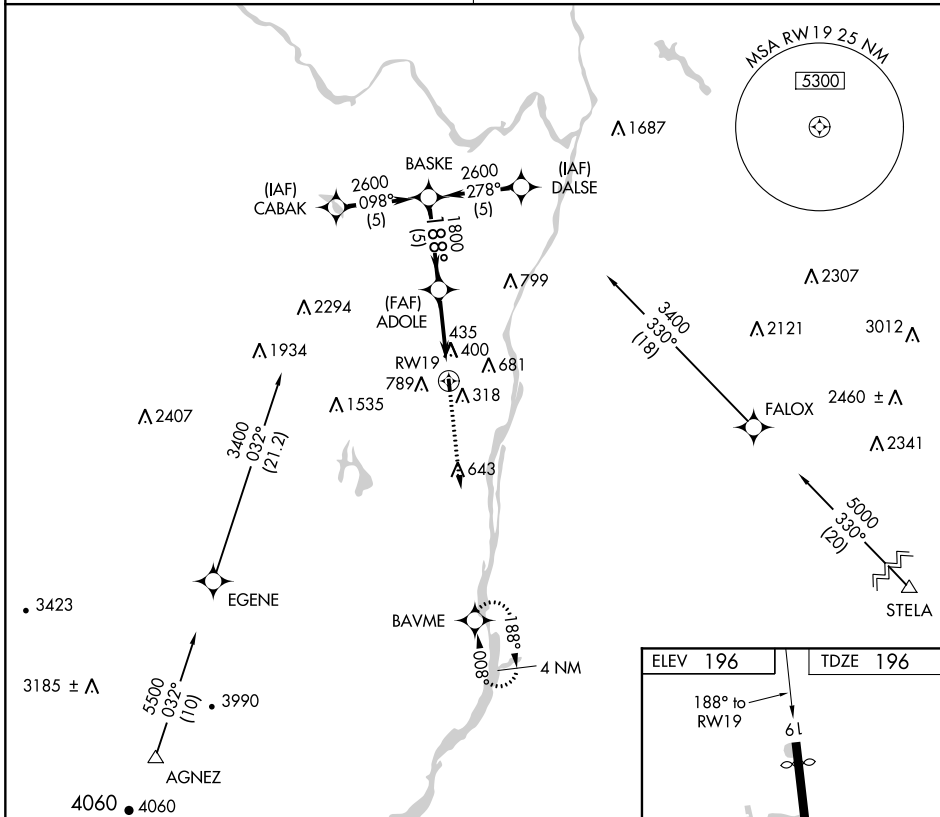
CATEGORY	A	B	C	D
LNAV MDA	960-1 764 (800-1)	960-1¼ 764 (800-1¼)		NA

APP CRS	Rwy Idg	2729
188°	TDZE	196
	Apt Elev	196

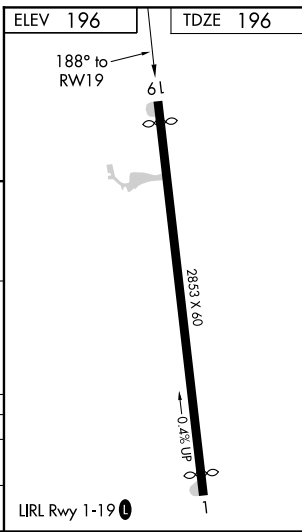
RNAV (GPS) RWY 19

SOUTH ALBANY (4B0)

RNP APCH.	Use Albany Intl altimeter setting. Procedure NA at night. Rwy 19 helicopter visibility reduction below 1 SM NA.	MISSED APPROACH: Climb to 3000 direct BAVME WP and hold.
ALBANY APP CON 118.05 263.075	CTAF 122.9 0	



Procedure Turn NA	Visual Segment - Obstacles.		3000	BAVME
	BASKE	ADOLE		
	2600	1800		RWY 19
	5 NM		4.9 NM	
CATEGORY	A	B	C	D
LNAV MDA	740-1	544 (600-1)	NA	
CIRCLING	840-1 644 (700-1)	1180-1½ 984 (1000-1½)	NA	



NE-2, 19 MAY 2022 to 16 JUN 2022

NE-2, 19 MAY 2022 to 16 JUN 2022