

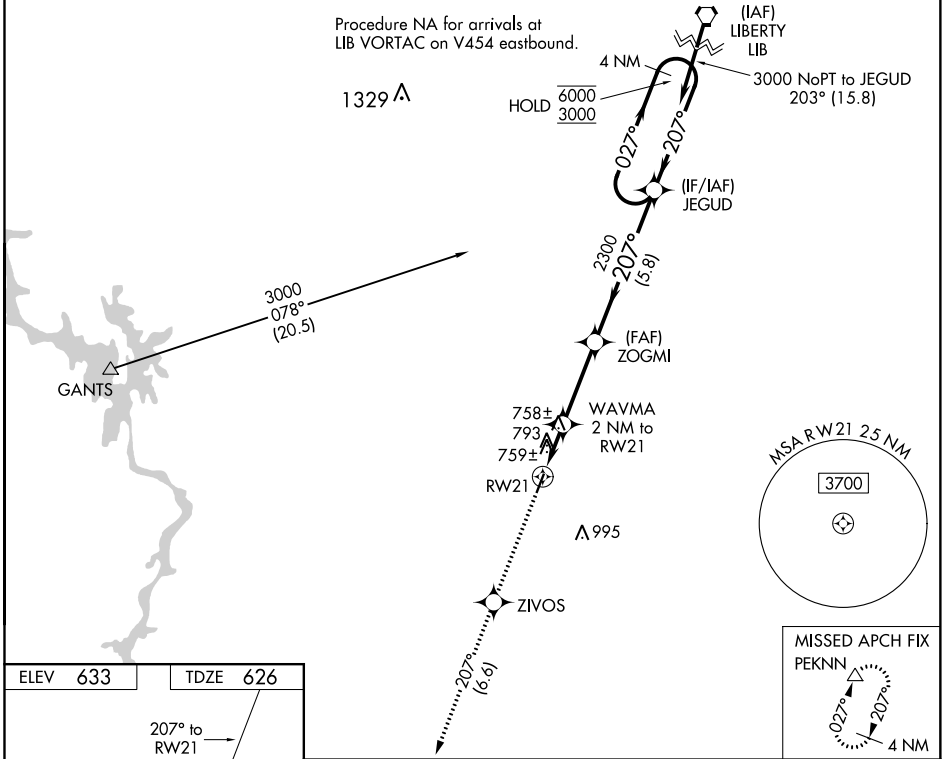
WAAS CH <b>72935</b> <b>W21A</b>	APP CRS <b>207°</b>	Rwy Idg TDZE <b>626</b> Apt Elev <b>633</b>
--	------------------------	---

# RNAV (GPS) RWY 21

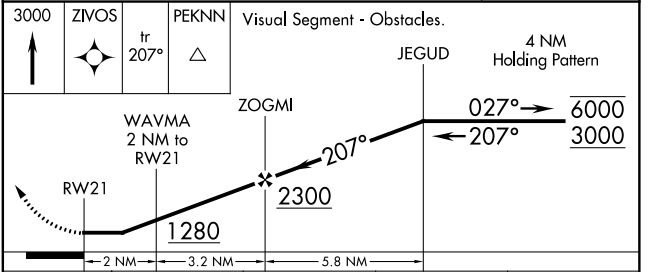
MONTGOMERY COUNTY (43A)

RNP APCH-GPS.	MISSED APPROACH: Climb to 3000 direct ZIVOS and on track 207° to PEKNN and hold.
<p>▼ Rwy 21 helicopter visibility reduction below 1 SM NA. Use Asheboro altimeter setting; when not received, use Albemarle altimeter setting. Procedure NA at night.</p> <p>▲ NA</p>	

HBI AWOS-3 <b>119.275</b>	FAYETTEVILLE APP CON <b>127.8 343.725</b>	UNICOM <b>122.8 (CTAF) 0</b>
------------------------------	--	---------------------------------



ELEV 633	TDZE 626
----------	----------



CATEGORY	A	B	C	D
LP MDA	1060-1	434 (500-1)		NA
LNAV MDA	1100-1	474 (500-1)		NA
<b>C</b> CIRCLING	1240-1 607 (700-1)	1340-1 707 (800-1)		NA

SE-2, 19 MAY 2022 to 16 JUN 2022

SE-2, 19 MAY 2022 to 16 JUN 2022

WAAS CH <b>61235</b> <b>W03A</b>	APP CRS <b>027°</b>	Rwy Idg <b>4002</b> TDZE <b>617</b> Apt Elev <b>633</b>
--	------------------------	---

# RNAV (GPS) RWY 3

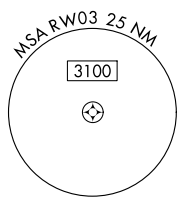
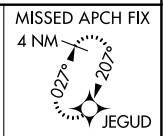
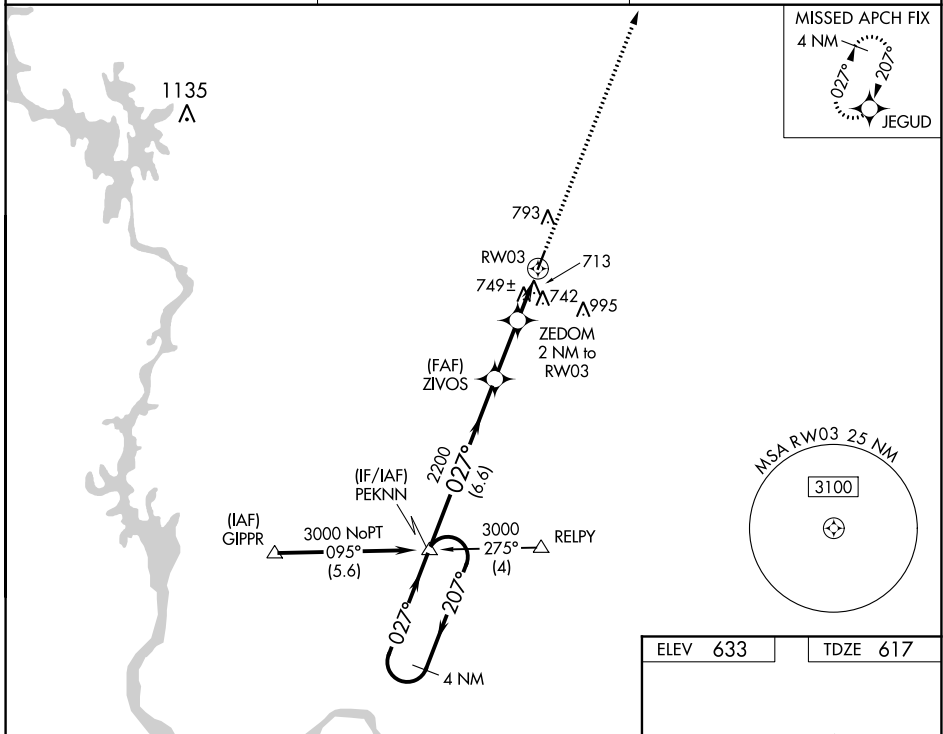
MONTGOMERY COUNTY (43A)

RNP APCH-GPS.

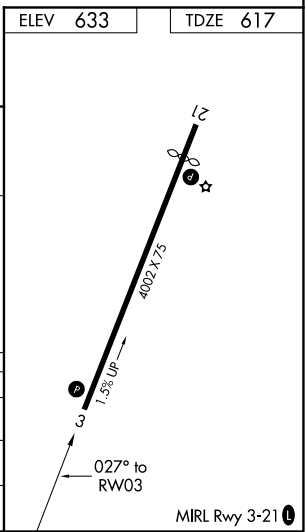
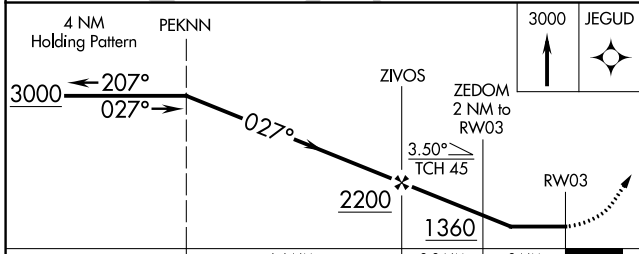
Use Asheville alimeter setting; when not received, use Albemarle alimeter setting.  
 Circling Rwy 21 NA at night. Rwy 3 helicopter visibility reduction below 3/4 SM NA.

MISSED APPROACH: Climb to 3000 direct JEGUD and hold.

HBI AWOS-3 <b>119.275</b>	FAYETTEVILLE APP CON <b>127.8 343.725</b>	UNICOM <b>122.8 (CTAF) 0</b>
------------------------------	--	---------------------------------



ELEV 633	TDZE 617
----------	----------



CATEGORY	A	B	C	D
LP MDA	1060-1	443 (500-1)		NA
LNAV MDA	1080-1	463 (500-1)		NA
CIRCLING	1240-1 607 (700-1)	1340-1 707 (800-1)		NA

SE-2, 19 MAY 2022 to 16 JUN 2022

SE-2, 19 MAY 2022 to 16 JUN 2022