

AEROZ TWO DEPARTURE (RNAV)  
(AEROZ2.AEROZ) 22APR21

LAKEWAY AIRPARK (3R9)  
LAKEWAY, TEXAS

UNICOM (CTAF)  
123.0  
AUSTIN DEP CON  
119.0 370.85

SAN ANGELO  
SJT

**TOP ALTITUDE:  
ASSIGNED BY ATC**

- NOTE: RADAR required.
- NOTE: DME/DME/IRU or GPS required.
- NOTE: RNAV 1.
- NOTE: TAKEOFF Rwy 16 requires a climb to 1700 on heading 165° prior to turning for obstacle avoidance.



TAKEOFF MINIMUMS

Rwy 16: 500-2¾ or standard with minimum climb of 265' per NM to 1500.  
Rwy 34: Standard.

NOTE: Chart not to scale.

**DEPARTURE ROUTE DESCRIPTION**

TAKEOFF RUNWAY 16: Climb heading 165° to 1700, then as assigned by ATC for vectors to cross AMUSE at or above 5000, thence....

TAKEOFF RUNWAY 34: Climb on heading 345° or as assigned by ATC for vectors to cross AMUSE at or above 5000, thence....

... on track 293° to AEROZ, then on SAN ANGELO TRANSITION. Maintain altitude assigned by ATC. Expect filed altitude 10 minutes after departure.

SAN ANGELO TRANSITION (AEROZ2.SJT)

FL180  
293°  
(91)

AEROZ

293°  
(33)

AMUSE  
5000



(AEROZ2.AEROZ) 21112  
AEROZ TWO DEPARTURE (RNAV)

AL-6677

LAKEWAY AIRPARK (3R9)  
LAKEWAY, TEXAS

(BNDIA3.BNDIA) 21112

AL-6677 (FAA)

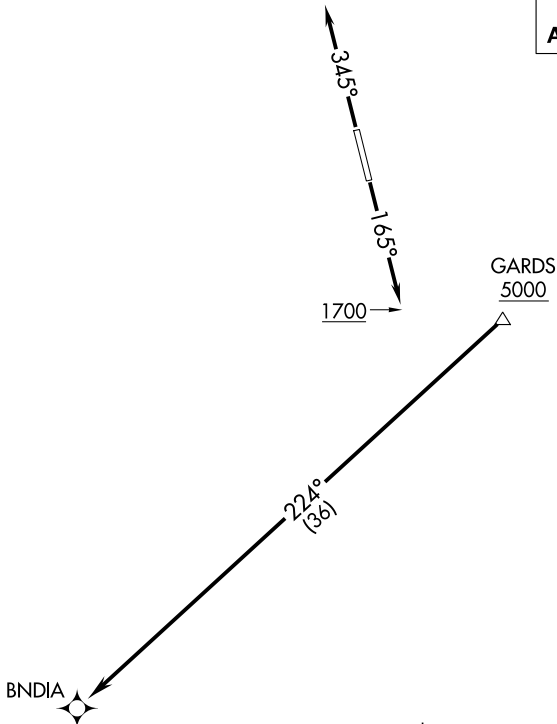
LAKEWAY AIRPARK (3R9)

# BNDIA THREE DEPARTURE (RNAV)

LAKEWAY, TEXAS

UNICOM (CTAF)  
123.0  
AUSTIN DEP CON  
119.0 370.85

**TOP ALTITUDE:  
ASSIGNED BY ATC**



- NOTE: RADAR required.
- NOTE: DME/DME/IRU or GPS required.
- NOTE: RNAV 1.
- NOTE: Takeoff Rwy 16 requires a climb to 1700 on heading 165° prior to turning for obstacle avoidance.

**TAKEOFF MINIMUMS:**

Rwy 16: 500-2¾ or standard with minimum climb of 265' per NM to 1500.  
Rwy 34: Standard.

NOTE: Chart not to scale.



## DEPARTURE ROUTE DESCRIPTION

TAKEOFF RUNWAY 16: Climb on heading 165° to 1700, then as assigned by ATC for vectors to cross GARDS at or above 5000, thence....

TAKEOFF RUNWAY 34: Climb on heading 345° or as assigned by ATC for vectors to cross GARDS at or above 5000, thence....

....on track 224° to BNDIA. Maintain altitude assigned by ATC. Expect filed altitude 10 minutes after departure.

# BNDIA THREE DEPARTURE (RNAV)

(BNDIA3.BNDIA) 22APR21

LAKEWAY, TEXAS

LAKEWAY AIRPARK (3R9)

SC-3, 22 FEB 2024 to 21 MAR 2024

SC-3, 22 FEB 2024 to 21 MAR 2024

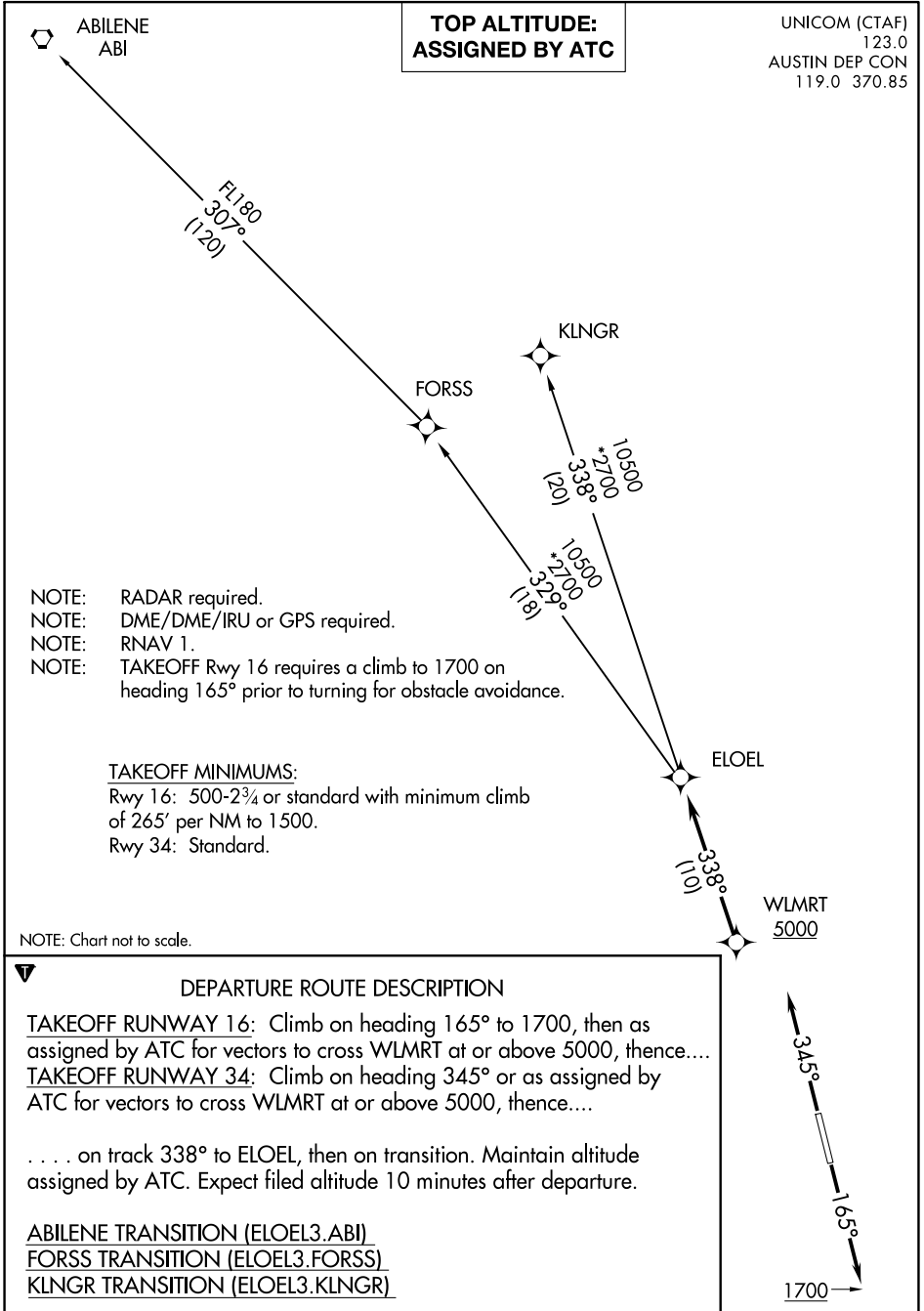
(ELOEL3.ELOEL) 21112

# ELOEL THREE DEPARTURE (RNAV)

AL-6677 (FAA)

LAKEWAY AIRPARK (3R9)

LAKEWAY, TEXAS



SC-3, 22 FEB 2024 to 21 MAR 2024

SC-3, 22 FEB 2024 to 21 MAR 2024

# ELOEL THREE DEPARTURE (RNAV)

(ELOEL3.ELOEL) 22APR21

LAKEWAY, TEXAS

LAKEWAY AIRPARK (3R9)

ILEXY FOUR DEPARTURE (RNAV)  
(ILEXY4.ILEXY) 15JUN23

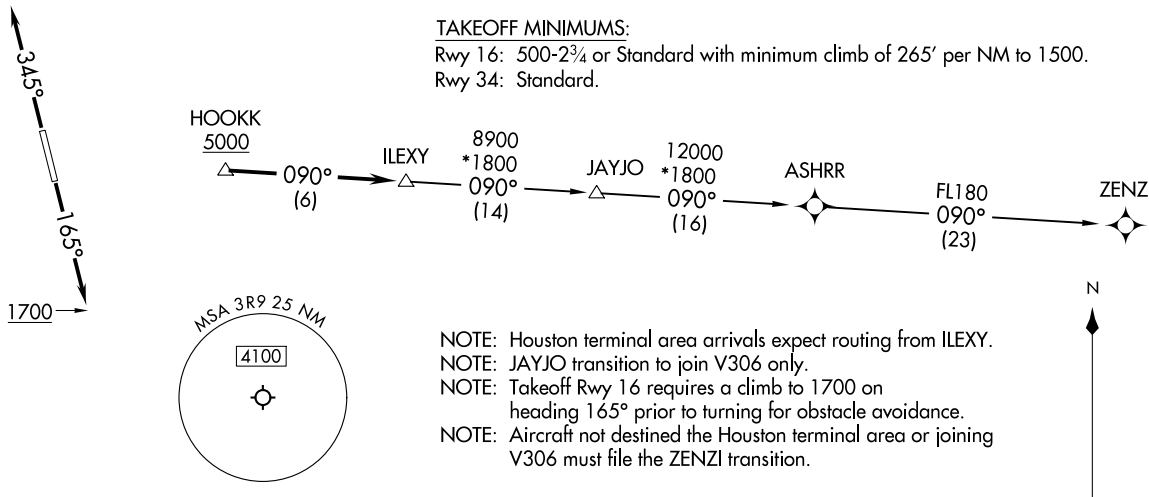
UNICOM (CTAF)  
123.0  
AUSTIN DEP CON  
119.0 370.85

RNAV 1- DME/DME/IRU or GPS.  
RADAR required.

**TOP ALTITUDE:  
ASSIGNED BY ATC**

TAKEOFF MINIMUMS:

Rwy 16: 500-2¾ or Standard with minimum climb of 265' per NM to 1500.  
Rwy 34: Standard.



- NOTE: Houston terminal area arrivals expect routing from ILEXY.
- NOTE: JAYJO transition to join V306 only.
- NOTE: Takeoff Rwy 16 requires a climb to 1700 on heading 165° prior to turning for obstacle avoidance.
- NOTE: Aircraft not destined the Houston terminal area or joining V306 must file the ZENZI transition.

NOTE: Chart not to scale.

**DEPARTURE ROUTE DESCRIPTION**

TAKEOFF RUNWAY 16: Climb on heading 165° to 1700, then as assigned by ATC for vectors to cross HOOKK at or above 5000, thence. . . .

TAKEOFF RUNWAY 34: Climb on heading 345° or as assigned by ATC for vectors to cross HOOKK at or above 5000, thence. . . .

. . . . on track 090° to ILEXY, then on transition. Maintain altitude assigned by ATC. Expect filed altitude 10 minutes after departure.

JAYJO TRANSITION (ILEXY4.JAYJO)

ZENZI TRANSITION (ILEXY4.ZENZI)

LAKEWAY, TEXAS  
LAKEWAY AIRPARK (3R9)

(ILEXY4.ILEXY) 23166  
ILEXY FOUR DEPARTURE (RNAV)

AL-6677 (FAA)

LAKEWAY AIRPARK (3R9)  
LAKEWAY, TEXAS

(MUCKY3.MUCKY) 21112

AL-6677 (FAA)

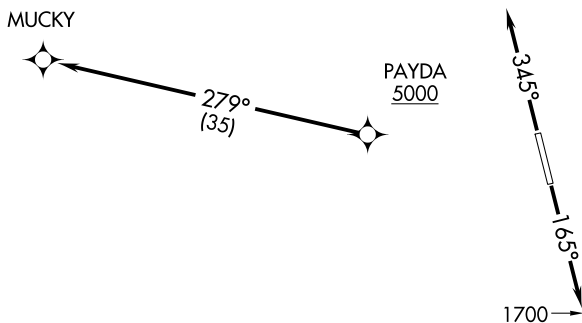
LAKEWAY AIRPARK (3R9)

# MUCKY THREE DEPARTURE (RNAV)

LAKEWAY, TEXAS

UNICOM (CTAF)  
123.0  
AUSTIN DEP CON  
119.0 370.85

**TOP ALTITUDE:  
ASSIGNED BY ATC**



### TAKEOFF MINIMUMS:

Rwy 16: 500-2<sup>3</sup>/<sub>4</sub> or standard with minimum climb of 265' per NM to 1500.  
Rwy 34: Standard.

- NOTE: RADAR required.
- NOTE: DME/DME/IRU or GPS required.
- NOTE: RNAV 1.
- NOTE: TAKEOFF Rwy 16 requires a climb to 1700 on heading 165° prior to turning for obstacle avoidance.

NOTE: Chart not to scale.



### DEPARTURE ROUTE DESCRIPTION

TAKEOFF RUNWAY 16: Climb on heading 165° to 1700, then as assigned by ATC for vectors to cross PAYDA at or above 5000, thence. . .

TAKEOFF RUNWAY 34: Climb on heading 344° or as assigned by ATC for vectors to cross PAYDA at of above 5000, thence . . . .

. . . . on track 279° to MUCKY. Maintain altitude assigned by ATC. Expect filed altitude 10 minutes after departure.

# MUCKY THREE DEPARTURE (RNAV)

(MUCKY3.MUCKY) 22APR21

LAKEWAY, TEXAS  
LAKEWAY AIRPARK (3R9)

SC-3, 22 FEB 2024 to 21 MAR 2024

SC-3, 22 FEB 2024 to 21 MAR 2024

(SAYBR3.SAYBR) 21112

# SAYBR THREE DEPARTURE (RNAV)

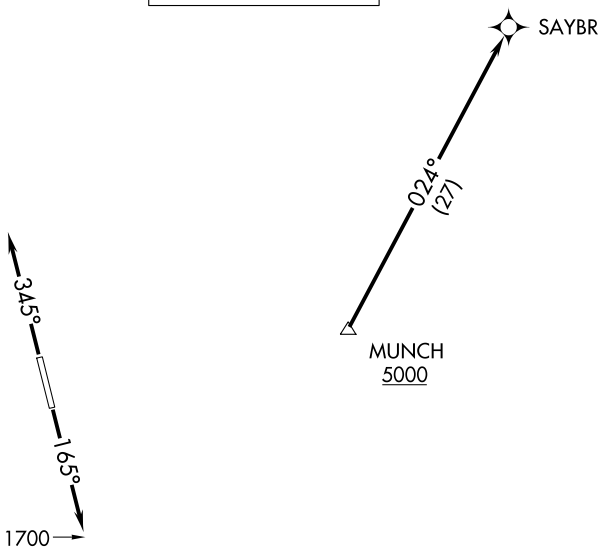
AL-6677 (FAA)

LAKEWAY AIRPARK (3R9)

LAKEWAY, TEXAS

UNICOM (CTAF)  
123.0  
AUSTIN DEP CON  
119.0 370.85

**TOP ALTITUDE:  
ASSIGNED BY ATC**



- NOTE: RADAR required.
- NOTE: DME/DME/IRU or GPS required.
- NOTE: RNAV 1.
- NOTE: Takeoff Rwy 16 requires a climb to 1700 on heading 165° prior to turning for obstacle avoidance.
- NOTE: For DFW terminal area arrivals at FL230 or below only.

### TAKEOFF MINIMUMS

- Rwy 34: Standard.
- Rwy 16: 500-2¾ or standard with minimum climb of 265' per NM to 1500.

NOTE: Chart not to scale.



### DEPARTURE ROUTE DESCRIPTION

TAKEOFF RUNWAY 16: Climb on heading 165° to 1700, then as assigned by ATC for vectors to cross MUNCH at or above 5000, thence. . . .

TAKEOFF RUNWAY 34: Climb on heading 345° or as assigned by ATC for vectors to cross MUNCH at of above 5000, thence. . . .

. . . . on track 024° to SAYBR. Maintain altitude assigned by ATC.  
Expect filed altitude 10 minutes after departure.

# SAYBR THREE DEPARTURE (RNAV)

(SAYBR3.SAYBR) 22APR21

LAKEWAY, TEXAS

LAKEWAY AIRPARK (3R9)

SC-3, 22 FEB 2024 to 21 MAR 2024

SC-3, 22 FEB 2024 to 21 MAR 2024