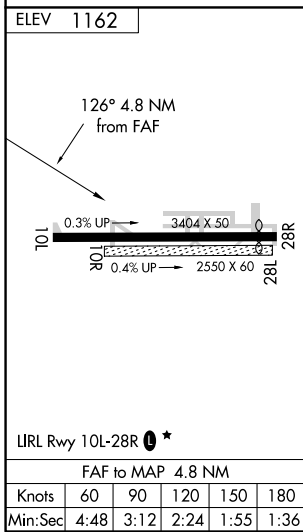
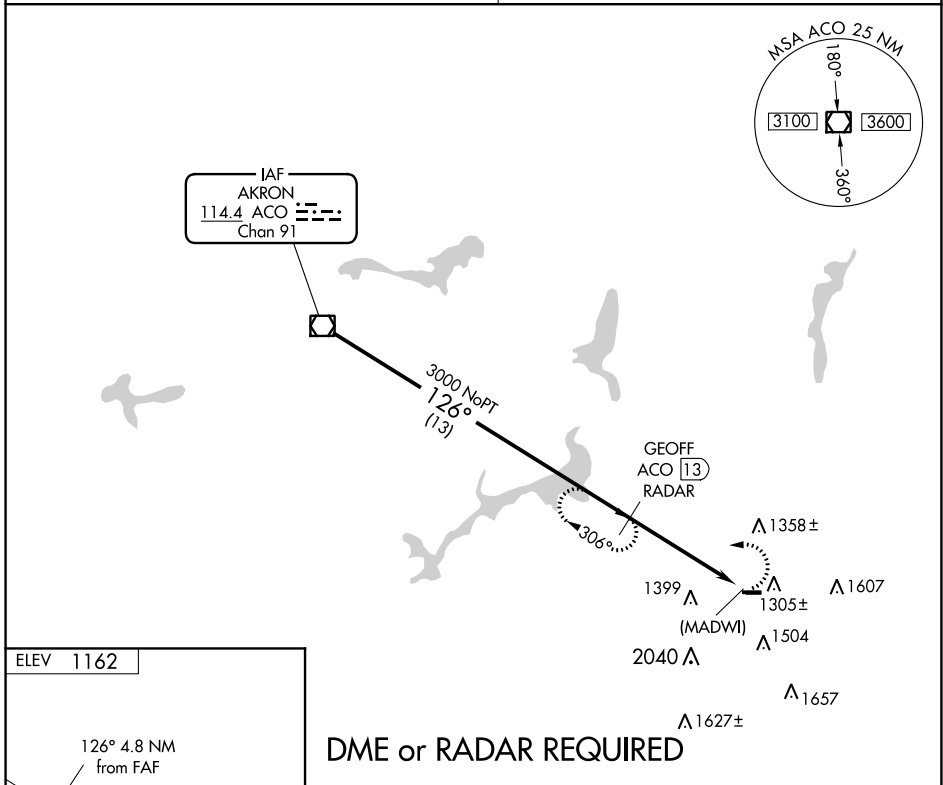


VOR/DME ACO <b>114.4</b> Chan <b>91</b>	APP CRS <b>126°</b>	Rwy Idg TDZE Apt Elev <b>N/A</b> <b>N/A</b> <b>1162</b>
---	------------------------	--

**VOR or GPS-A**  
SALEM AIRPARK INC (38D)

<b>NA</b> Obtain local altimeter on CTAF, when not received, use Youngstown altimeter setting.	MISSED APPROACH: Climbing left turn to 3000 via ACO R-126 to GEOFF and hold.
CLEVELAND APP CON * <b>125.5 371.875</b>	UNICOM <b>122.7 (CTAF) 0</b>



**DME or RADAR REQUIRED**

Procedure Turn NA	ACO VOR/DME	GEOFF ACO [13] RADAR	3000	GEOFF INT
	3000	3000	3000	(MADWI) ACO [17.8]
	13 NM		4.8 NM	
CATEGORY	A	B	C	D
CIRCLING	1680-1	518 (600-1)	1720-1½ 558 (600-1½)	NA
YOUNGSTOWN ALTIMETER SETTING MINIMUMS				
CIRCLING	1740-1	578 (600-1)	1780-1¾ 618 (700-1¾)	NA

EC-2, 28 JAN 2021 to 25 FEB 2021

EC-2, 28 JAN 2021 to 25 FEB 2021