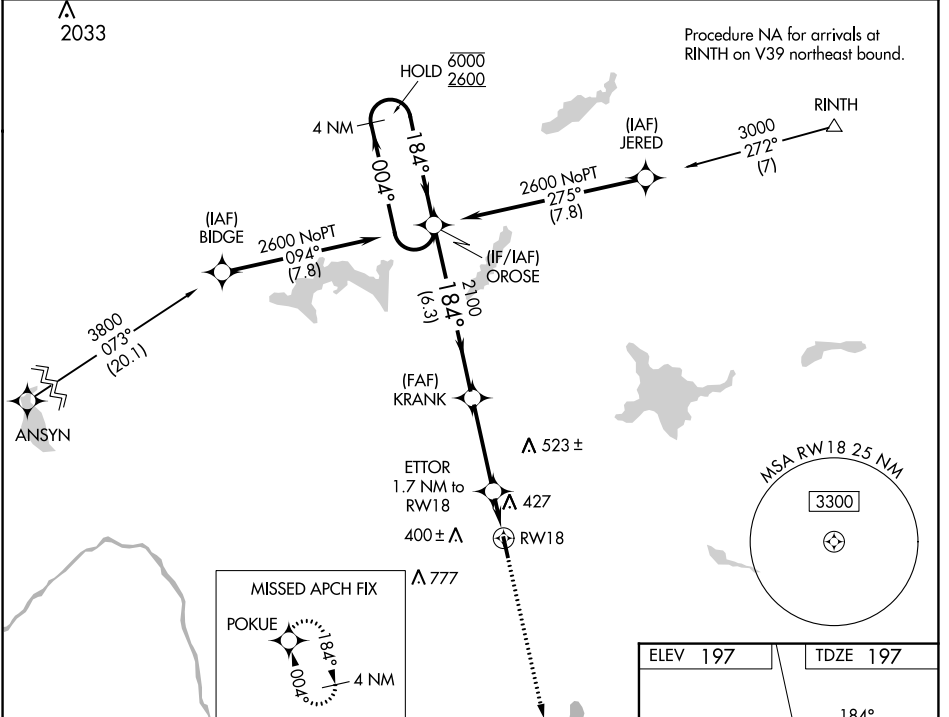


WAAS CH 53342 W18A	APP CRS 184°	Rwy Idg TDZE Apt Elev	4003 197 197
--	------------------------	-----------------------------	---

RNAV (GPS) RWY 18

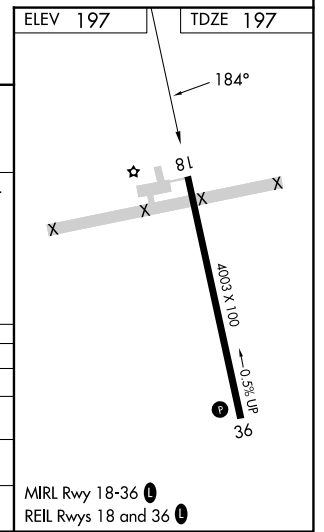
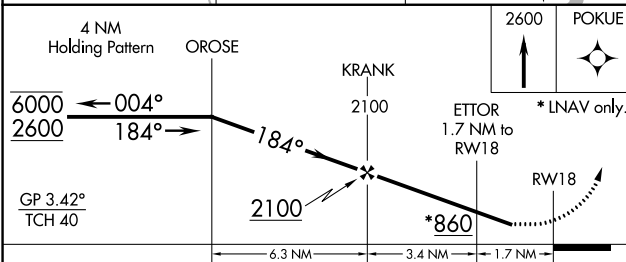
PITTSFIELD MUNI (2B7)

RNP APCH.		MISSED APPROACH: Climb to 2600 direct POKUE and hold.
V Rwy 18 helicopter visibility reduction below 3/4 SM NA. Use Bangor altimeter setting; when not received procedure NA.	NA	
BGR ASOS 127.75	BANGOR APP CON 118.925 239.3	UNICOM 122.8 (CTAF) 0



NE-1, 30 NOV 2023 to 28 DEC 2023

NE-1, 30 NOV 2023 to 28 DEC 2023



CATEGORY	A	B	C	D
LPV DA	610-1 1/8	413 (500-1 1/8)		NA
LNAV/VNAV DA	785-1 3/4	588 (600-1 3/4)		NA
LNAV MDA	740-1	543 (600-1)	740-1 5/8 543 (600-1 5/8)	NA
C CIRCLING	800-1	603 (700-1)	880-2 683 (700-2)	NA

WAAS CH 90242 W36A	APP CRS 004°	Rwy Idg TDZE Apt Elev	4003 194 197
--	------------------------	-----------------------------	---

RNAV (GPS) RWY 36

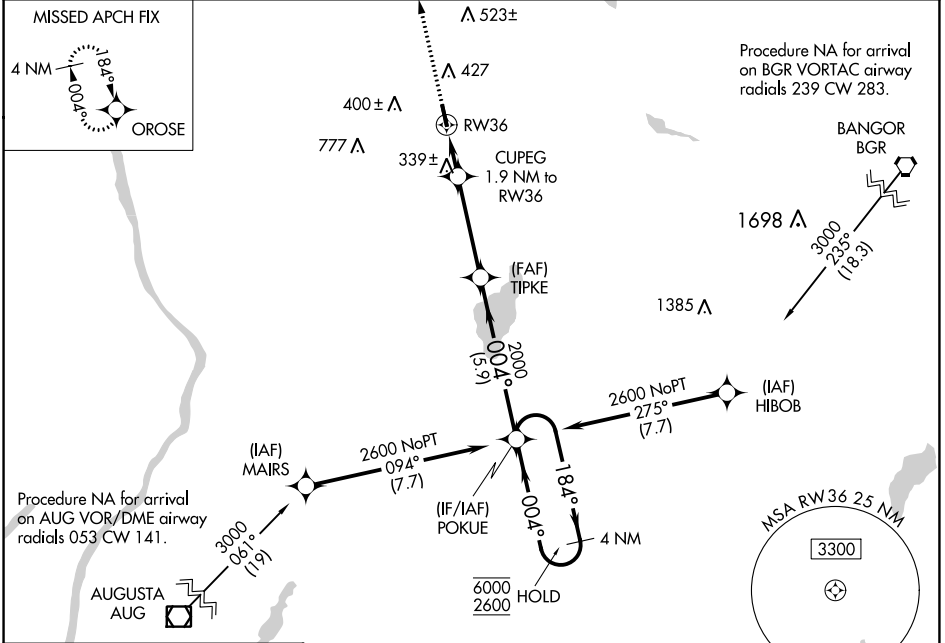
PITTSFIELD MUNI (2B7)

RNP APCH.

▼ Rwy 36 helicopter visibility reduction below 3/4 SM NA.
▲ NA Baro-VNAV NA. Use Bangor altimeter setting; when not received procedure NA.

MISSED APPROACH: Climb to 2600 direct OROSE and hold.

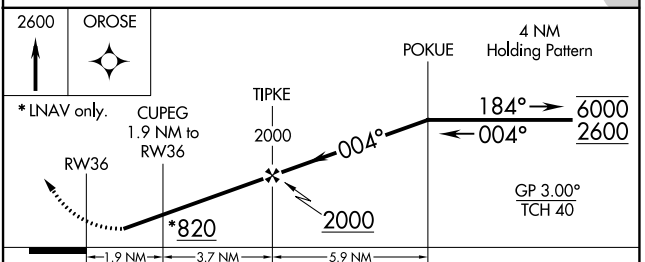
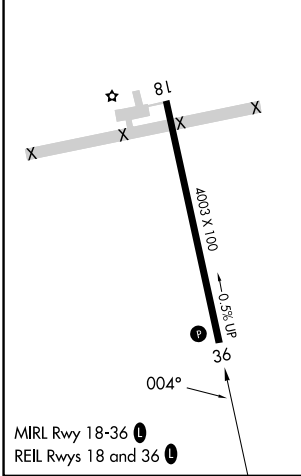
BGR ASOS 127.75	BANGOR APP CON 118.925 239.3	UNICOM 122.8 (CTAF)
---------------------------	--	-------------------------------



NE-1, 30 NOV 2023 to 28 DEC 2023

NE-1, 30 NOV 2023 to 28 DEC 2023

ELEV 197	TDZE 194
----------	----------



CATEGORY	A	B	C	D
LPV DA	499-1 305 (400-1)			NA
LNAV/VNAV DA	499-1 305 (400-1)			NA
LNAV MDA	660-1	466 (500-1)	660-1 3/8 466 (500-1 3/8)	NA
C CIRCLING	800-1	603 (700-1)	880-2 683 (700-2)	NA