

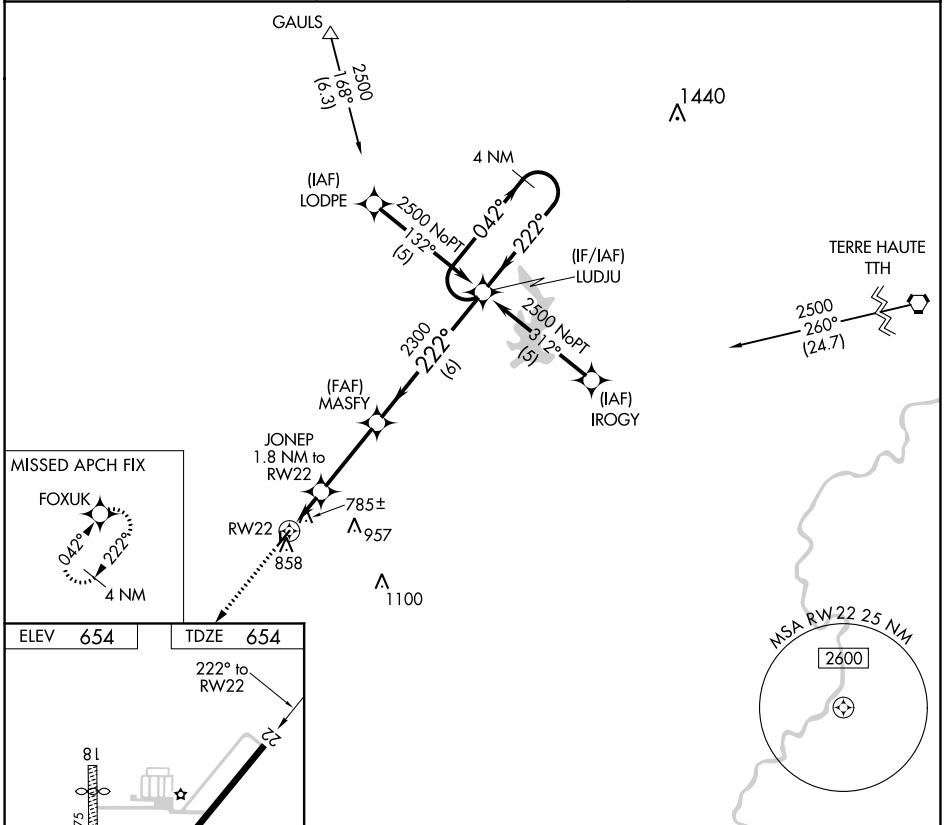
APP CRS	Rwy Idg	4001
222°	TDZE	654
	Apt Elev	654

RNAV (GPS) RWY 22

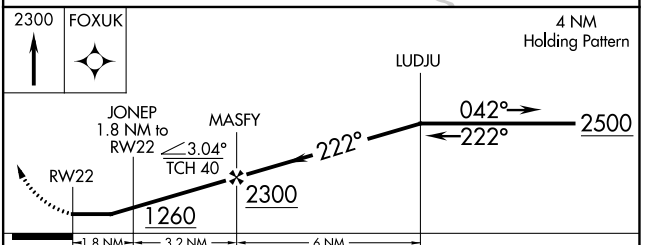
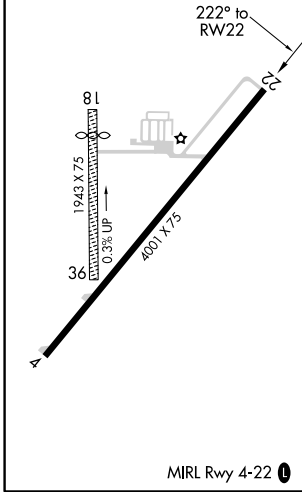
CASEY MUNI (1H8)

RNP APCH.	MISSED APPROACH: Climb to 2300 direct FOXUK and hold.
<p>▼ Rwy 22 helicopter visibility reduction below 3/4 SM NA.</p> <p>▲ NA Use Terre Haute Rgnl altimeter setting; when not received, use Robinson altimeter setting.</p>	

HUF ASOS 127.5 269.375	HULMAN APP CON 125.45 263.125	UNICOM 122.8 (CTAF) 0
----------------------------------	---	---------------------------------



ELEV 654	TDZE 654
----------	----------



CATEGORY	A	B	C	D
LNAV MDA	1180-1	526 (600-1)	1180-1½ 526 (600-1½)	1180-1¾ 526 (600-1¾)

EC-3, 11 AUG 2022 to 08 SEP 2022

EC-3, 11 AUG 2022 to 08 SEP 2022

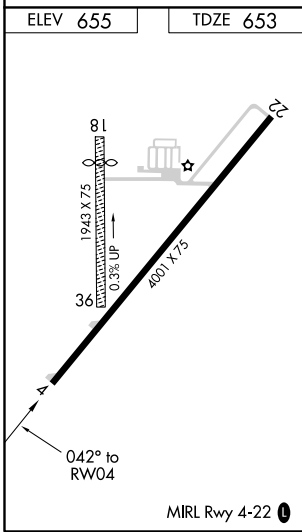
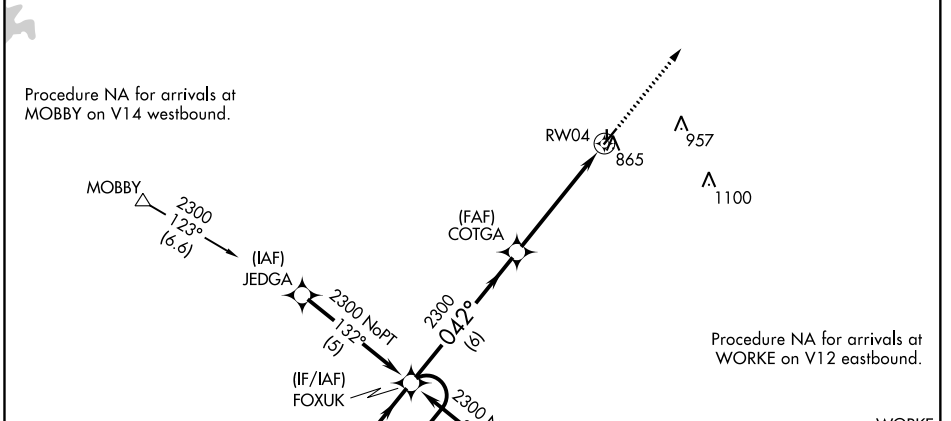
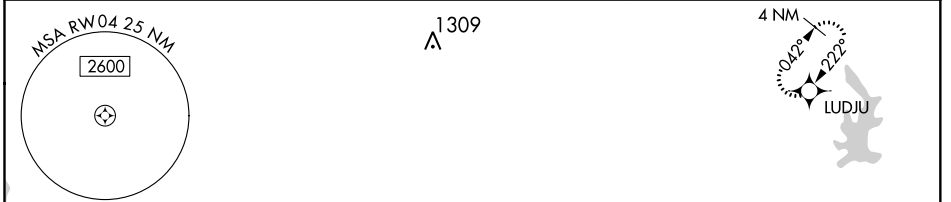
APP CRS	Rwy Idg	4001
042°	TDZE	653
	Apt Elev	655

RNAV (GPS) RWY 4

CASEY MUNI (1H8)

RNP APCH.	MISSED APPROACH: Climb to 2500 direct LUDJU and hold.
<p>▼ Rwy 4 helicopter visibility reduction below ¼ SM NA.</p> <p>▲ NA Use Terre Haute Rgnl altimeter setting; when not received, use Robinson altimeter setting.</p>	

HUF ASOS 127.5 269.375	HULMAN APP CON 125.45 263.125	UNICOM 122.8 (CTAF) 0
----------------------------------	---	---------------------------------



4 NM Holding Pattern	FOXUK	COTGA	2500	LUDJU
6000	← 222°	→ 042°	2300	
2300				
			3.04° TCH 40	RWY 4
		6 NM	5 NM	
CATEGORY	A	B	C	D
LNAV MDA	1260-1	607 (700-1)	1260-1¾ 607 (700-1¾)	1260-2 607 (700-2)

EC-3, 11 AUG 2022 to 08 SEP 2022

EC-3, 11 AUG 2022 to 08 SEP 2022