

APP CRS	Rwy Idg	3556
271°	TDZE	1183
	Apt Elev	1190

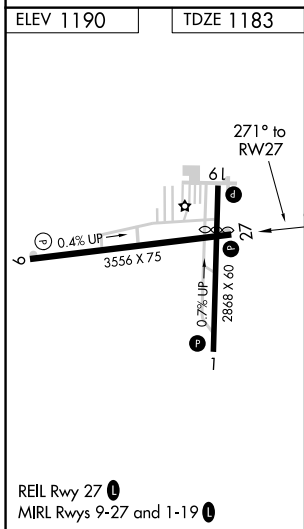
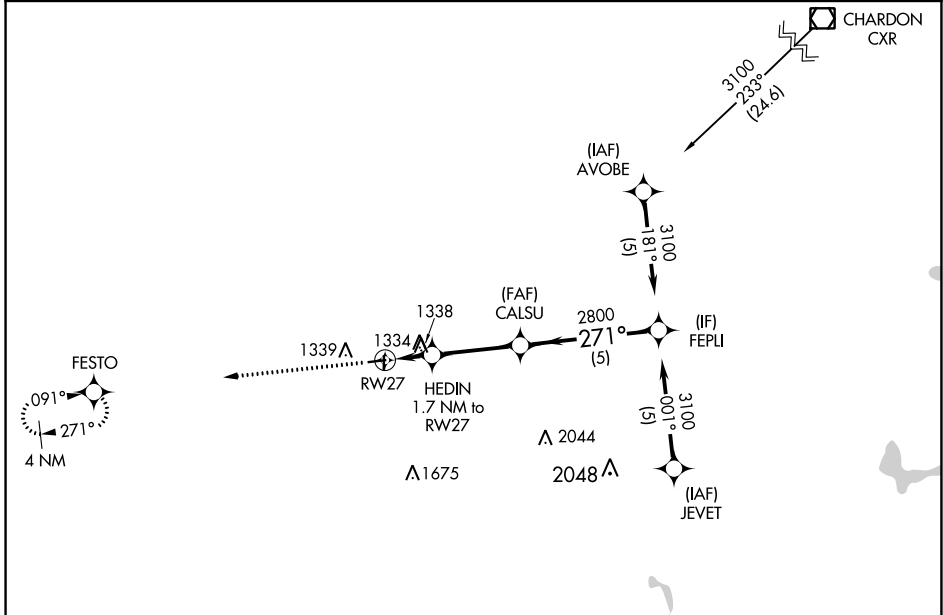
RNAV (GPS) RWY 27

MEDINA MUNI (1G5)

RNP APCH.
 ▼
 ▲ NA Rwy 27 helicopter visibility reduction below 3/4 SM NA. Use Cleveland-Hopkins Intl altimeter setting.

MISSED APPROACH: Climb to 2800 direct FESTO and hold.

CLE ASOS 127.85	CLEVELAND APP CON 125.35 346.325	UNICOM 123.0 (CTAF) 0
---------------------------	--	---------------------------------



ELEV 1190	TDZE 1183	MSA RWY 27 25 NM 3100			
2800	FESTO	Visual Segment - Obstacles.			
		HEDIN 1.7 NM to RWY27	CALSU	FEPLI	3100
		RWY27	2800		271°
		1760			
		1.7 NM	3.2 NM	5 NM	
CATEGORY	A	B	C	D	
LNAV MDA	1700-1	517 (600-1)	1700-1 3/8 517 (600-1 3/8)	NA	

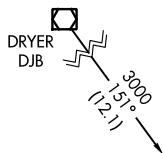
APP CRS 091°	Rwy Idg 3556
	TDZE 1179
	Apt Elev 1190

RNAV (GPS) RWY 9

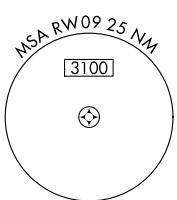
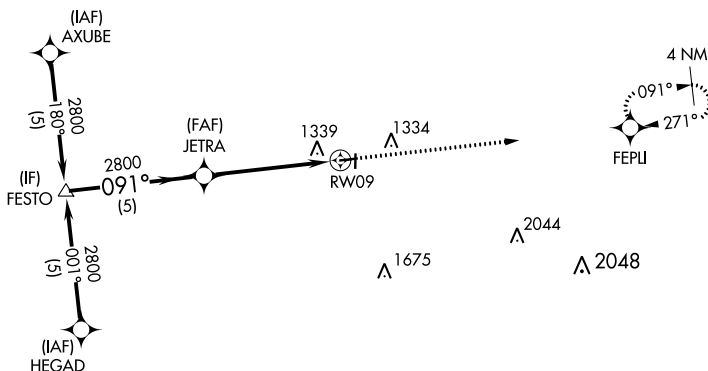
MEDINA MUNI (1G5)

RNP APCH.	<p>Procedure NA at night. Rwy 9 helicopter visibility reduction below 1 SM NA. Use Cleveland-Hopkins Intl altimeter setting.</p>	MISSED APPROACH: Climb to 2800 direct FEPLI and hold.
-----------	--	---

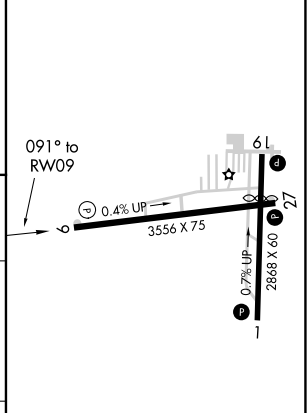
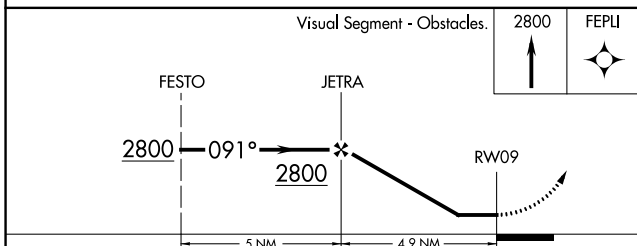
CLE ASOS 127.85	CLEVELAND APP CON 125.35 346.325	UNICOM 123.0 (CTAF) 0
---------------------------	--	---------------------------------



Procedure NA for arrival on DJB VOR/DME airway radials 074 CW 219.



ELEV 1190	TDZE 1179
-----------	-----------



CATEGORY	A	B	C	D
LNAV MDA	1700-1	521 (600-1)	1700-1½ 521 (600-1½)	NA

REIL Rwy 27 0
MIRL Rwy 9-27 and 1-19 0

EC-2, 30 DEC 2021 to 27 JAN 2022

EC-2, 30 DEC 2021 to 27 JAN 2022

VOR/DME ACO 114.4 Chan 91	APP CRS 278°	Rwy Idg TDZE 1183 Apt Elev 1190	3556
---	------------------------	---	-------------

VOR RWY 27

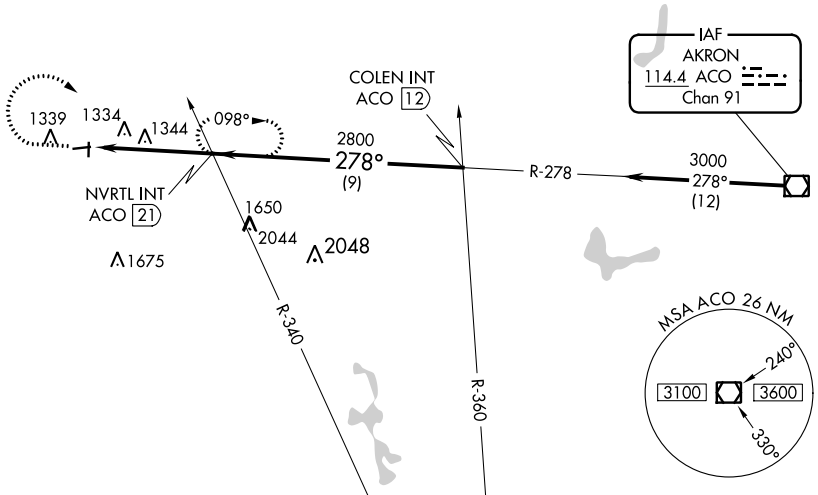
MEDINA MUNI (1G5)

NA Use Cleveland-Hopkins Intl altimeter setting. Circling Rwy 1, 9, 19 NA at night. Rwy 27 helicopter visibility reduction below 3/4 SM NA.

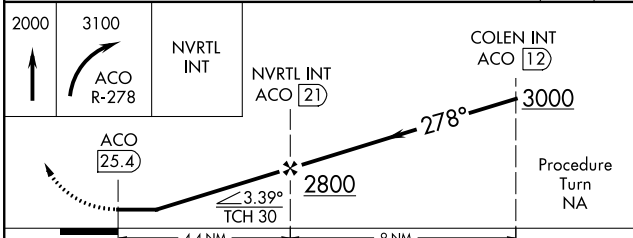
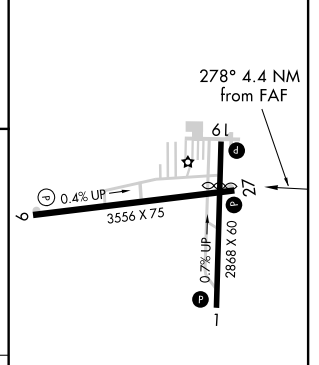
MISSED APPROACH: Climb to 2000 then climbing right turn to 3100 on ACO R-278 to NVRTL Int/21 DME and hold, continue climb-in-hold to 3100.

CLE ASOS 127.85	CLEVELAND APP CON 125.35 346.325	UNICOM 123.0 (CTAF) 0
---------------------------	--	---------------------------------

Procedure NA for arrivals on ACO VOR/DME airway radials 237 CW 323.



ELEV 1190	TDZE 1183
-----------	-----------



CATEGORY	A	B	C	D
S-27	1760-1 577 (600-1)	1760-1¼ 577 (600-1¼)	1760-1½ 577 (600-1½)	NA
CIRCLING	1800-1 610 (700-1)	1800-1¼ 610 (700-1¼)	1800-1¾ 610 (700-1¾)	NA

REIL Rwy 27 (L)
MIRL Rwy 9-27, 1-19 (I)

FAF to MAP 4.4 NM

Knots	60	90	120	150	180
Min:Sec	4:24	2:56	2:12	1:46	1:28

EC-2, 30 DEC 2021 to 27 JAN 2022

EC-2, 30 DEC 2021 to 27 JAN 2022