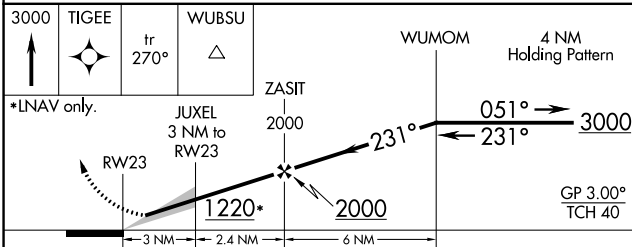
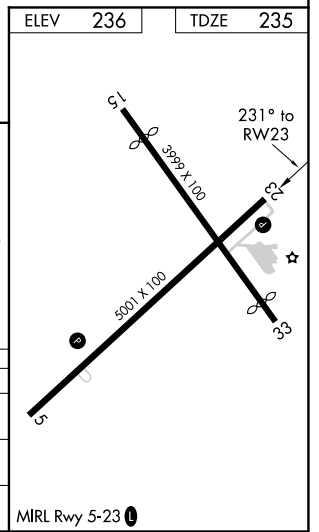
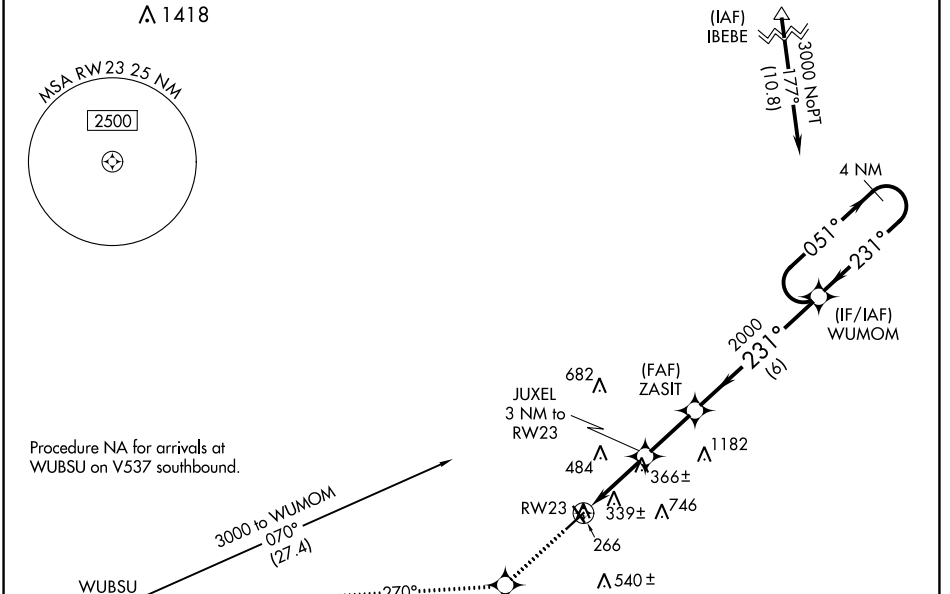


WAAS CH 81833 W23A	APP CRS 231°	Rwy Idg 5001 TDZE 235 Apt Elev 236
--	------------------------	---

RNAV (GPS) RWY 23

COOK COUNTY (15J)

RNP APCH.		MISSED APPROACH: Climb to 3000 direct TIGEE and on track 270° to WUBSU and hold.
<p>Baro-VNAV NA. Use Moultrie altimeter setting; when not received, use Valdosta Rgnl altimeter setting and increase all DA 7 feet and all MDA 20 feet, increase LNAV/VNAV all Cats visibility 1/8 SM and LNAV Cat C and D visibility 1/8 SM.</p>		
MGR AWOS-3PT 118.925	VALDOSTA APP CON* 126.6 285.6	UNICOM 122.8 (CTAF) 0



CATEGORY	A	B	C	D
LPV DA	536-1		301 (400-1)	
LNAV/VNAV DA	689-1½		454 (500-1½)	
LNAV MDA	740-1	505 (600-1)	740-1⅓	505 (600-1⅓)

SE-4, 10 SEP 2020 to 08 OCT 2020

SE-4, 10 SEP 2020 to 08 OCT 2020

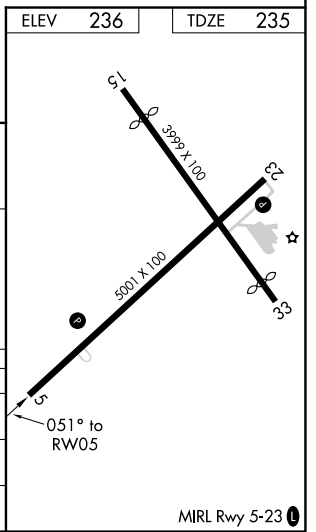
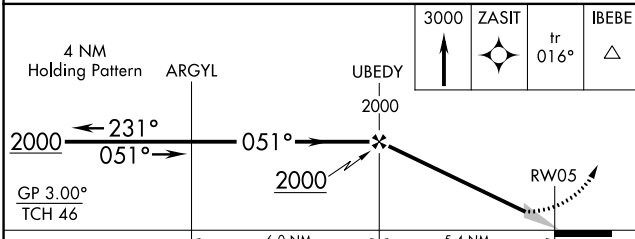
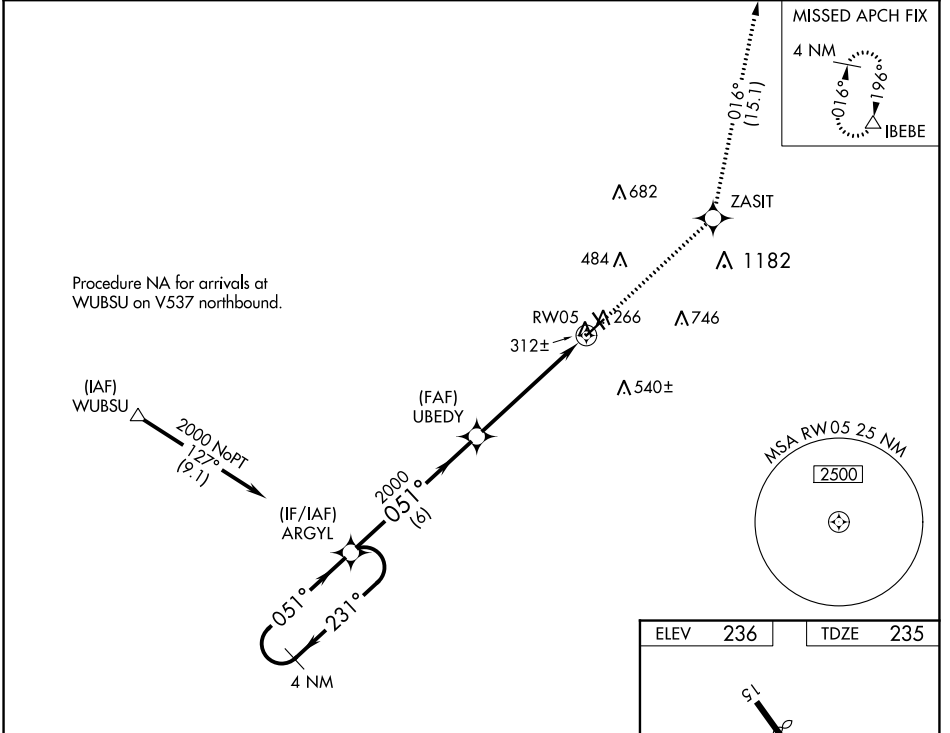
WAAS CH 42506 W05A	APP CRS 051°	Rwy Idg TDZE Apt Elev	5001 235 236
--	------------------------	-----------------------------	---

RNAV (GPS) RWY 5

COOK COUNTY (15J)

RNP APCH.	<p>Baro-VNAV NA. Use Moultrie altimeter setting; when not received, use Valdosta Rgnl altimeter setting and increase all DA 7 feet and all MDA 20 feet.</p>	<p>MISSED APPROACH: Climb to 3000 direct ZASIT and on track 016° to IBEBE and hold.</p>
-----------	---	---

MGR AWOS-3PT 118.925	VALDOSTA APP CON* 126.6 285.6	UNICOM 122.8 (CTAF) 0
--------------------------------	---	---------------------------------



CATEGORY	A	B	C	D
LPV DA	536-1 301 (300-1)			
LNAV/VNAV DA	720-1 7/8 485 (500-1 7/8)			
LNAV MDA	840-1	605 (700-1)	840-1 3/4	605 (700-1 3/4)

SE-4, 10 SEP 2020 to 08 OCT 2020

SE-4, 10 SEP 2020 to 08 OCT 2020