

WAAS CH <b>56236</b> <b>W23A</b>	APP CRS <b>234°</b>	Rwy ldg TDZE <b>265</b> Apt Elev <b>265</b>	<b>4460</b>
--	------------------------	---	-------------

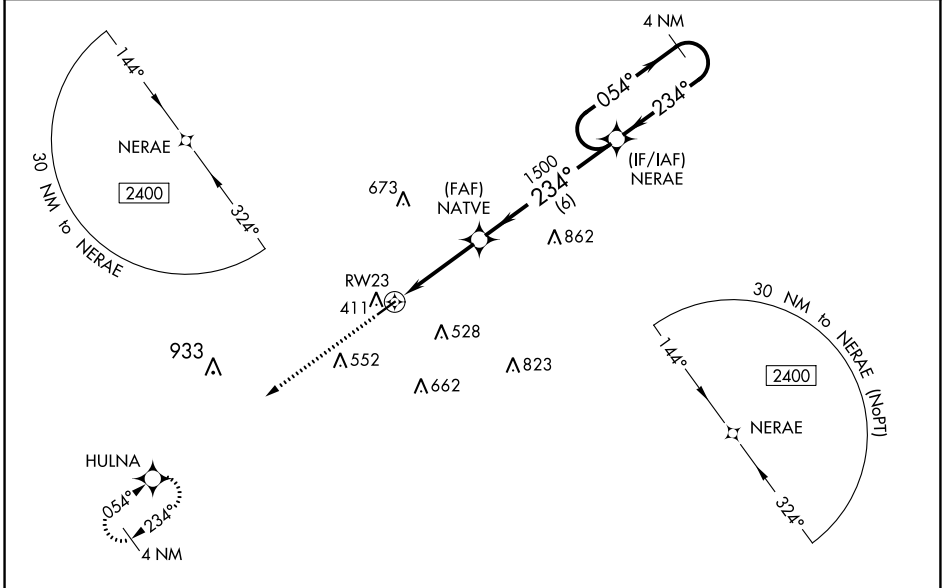
# RNAV (GPS) RWY 23

COLUMBIA-MARION COUNTY (ØRØ)

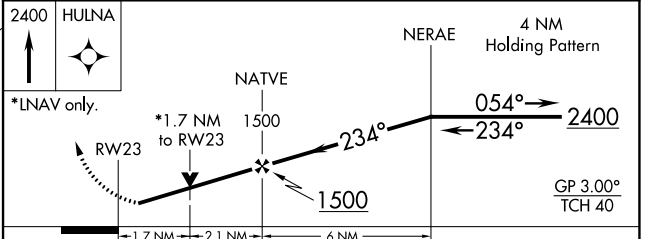
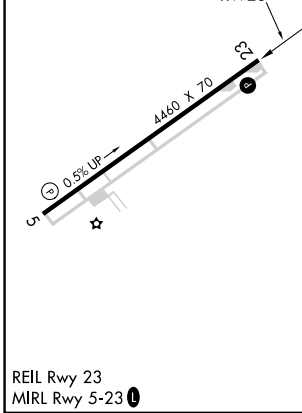
**⚠** For uncompensated Baro-VNAV systems, LNAV/VNAV NA below -15°C (5°F) or above 54°C (130°F). DME/DME RNP-0.3 NA. When local altimeter setting not received, use Hattiesburg-Laurel altimeter setting and increase all DA 66 feet and all MDA 80 feet; increase LPV and LNAV/VNAV all Cats and Circling Cat C visibilities ¼ mile, increase Circling Cat D visibility ½ mile, increase LNAV Cat C and D visibility ½ mile. VDP and Baro-VNAV NA when using Hattiesburg-Laurel altimeter setting. Rwy 23 helicopter visibility reduction below ¾ SM NA.

**MISSED APPROACH:**  
Climb to 2400 direct HULNA and hold.

AWOS-3PT <b>120.675</b>	HOUSTON CENTER <b>126.8 327.8</b>	UNICOM <b>122.8 (CTAF) Ø</b>
----------------------------	--------------------------------------	---------------------------------



ELEV <b>265</b>	TDZE <b>265</b>
-----------------	-----------------



CATEGORY	A	B	C	D
LPV DA		534-7/8	269 (300-7/8)	
LNAV/VNAV DA		766-1¾		501 (600-1¾)
LNAV MDA	860-1	595 (600-1)		860-1¾ 595 (600-1¾)
<b>ⓐ</b> CIRCLING	860-1	595 (600-1)		920-1¾ 1000-2¼ 655 (700-1¾) 735 (800-2¼)

WAAS CH <b>81836</b> <b>W05A</b>	APP CRS <b>054°</b>	Rwy Idg TDZE Apt Elev	<b>4460</b> <b>256</b> <b>265</b>
--	------------------------	-----------------------------	---

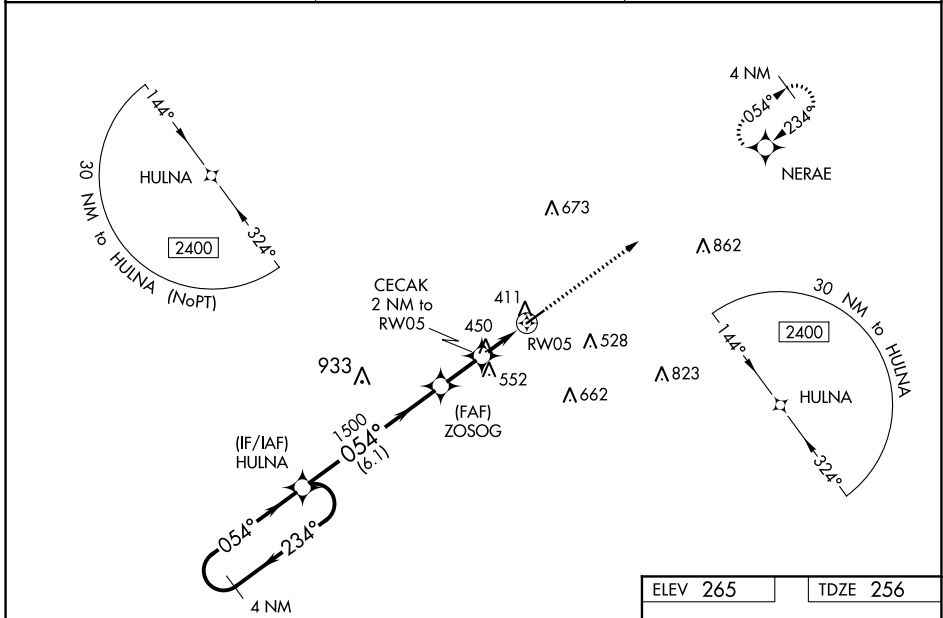
# RNAV (GPS) RWY 5

COLUMBIA-MARION COUNTY (ØRØ)

**⚠** For uncompensated Baro-VNAV systems, LNAV/VNAV NA below -15°C (5°F) or above 54°C (130°F). DME/DME RNP-0.3 NA. When local altimeter setting not received, use Hattiesburgh-Laurel Rgnl altimeter setting and increase all DA 66 feet and all MDA 80 feet; increase LPV all Cats visibility 1/8 mile and LNAV/VNAV all Cats and Circling Cat C visibilities 1/4 mile, increase Circling Cat D visibility 1/2 mile, increase LNAV Cat C and D visibility 3/8 mile. VDP and Baro-VNAV NA when using Hattiesburgh-Laurel Rgnl altimeter setting. Rwy 5 helicopter visibility reduction below 3/4 SM NA.

**MISSED APPROACH:**  
Climb to 2400 direct NERAE and hold.

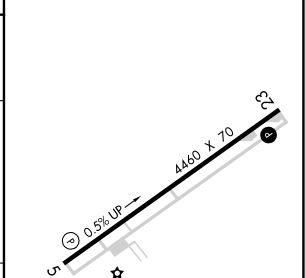
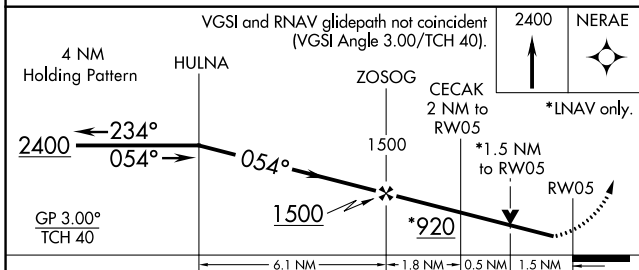
AWOS-3PT <b>120.675</b>	HOUSTON CENTER <b>126.8 327.8</b>	UNICOM <b>122.8 (CTAF) Ø</b>
----------------------------	--------------------------------------	---------------------------------



SC-4, 12 AUG 2021 to 09 SEP 2021

SC-4, 12 AUG 2021 to 09 SEP 2021

ELEV 265	TDZE 256
----------	----------



CATEGORY	A	B	C	D
LPV DA		506-7/8	250 (300-7/8)	
LNAV/VNAV DA		744-1 5/8	488 (500-1 5/8)	
LNAV MDA	760-1	504 (500-1)	760-1 3/8	504 (500-1 3/8)
<b>C</b> CIRCLING	760-1 495 (500-1)	820-1 555 (600-1)	920-1 3/4 655 (700-1 3/4)	1000-2 1/4 735 (800-2 1/4)

REIL Rwy 23  
MRL Rwy 5-23 Ø