

APP CRS	Rwy Idg	3849
045°	TDZE	281
	Apt Elev	288

RNAV (GPS) RWY 6R

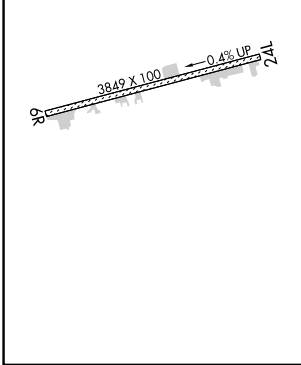
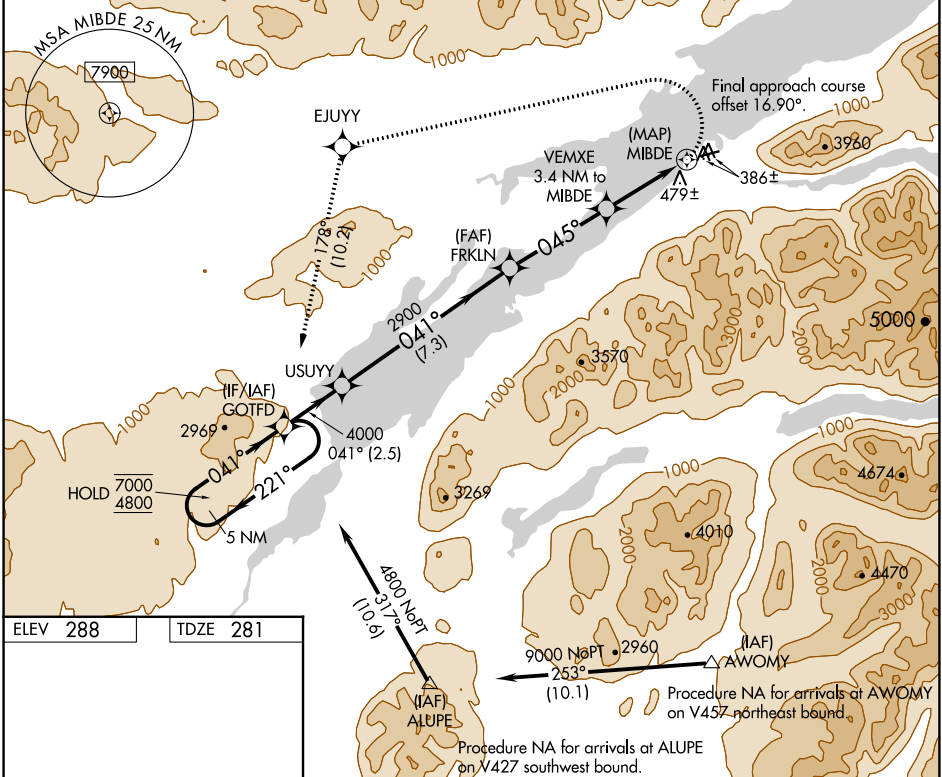
WILDER RUNWAY (Ø5K)(PAKX)

RNP APCH-GPS.

▼ Circling NA south of Rwy 6R and 24L.
 ▲ Procedure NA at night.
 ❄️ -19°C Rwy 6R helicopter visibility reduction below 1 SM NA.

MISSED APPROACH: Climbing left turn 4800 direct EJUY and on track 178° to GOTFD and hold, continue climb-in-hold to 4800.

AWOS-3P 118.025	ANCHORAGE CENTER 118.8 351.8	CTAF 122.9
---------------------------	--	----------------------



5 NM Holding Pattern	Visual Segment - Obstacles.				
	4800	EJUY	tr 178°	GOTFD	
7000 ← 221°	USUY	FRKLN	VEMXE 3.4 NM to MIBDE	MIBDE	
4800 041° →					2900
	← 2.5 NM	← 7.3 NM	← 4.1 NM	← 3.4 NM	← 0.5 NM
CATEGORY	A	B	C	D	
LNAV MDA	860-1 579 (600-1)		NA		
❑ CIRCLING	1280-1¼ 992 (1000-1¼)	1980-1½ 1692 (1700-1½)	NA		

AK, 25 JAN 2024 to 21 MAR 2024

AK, 25 JAN 2024 to 21 MAR 2024