

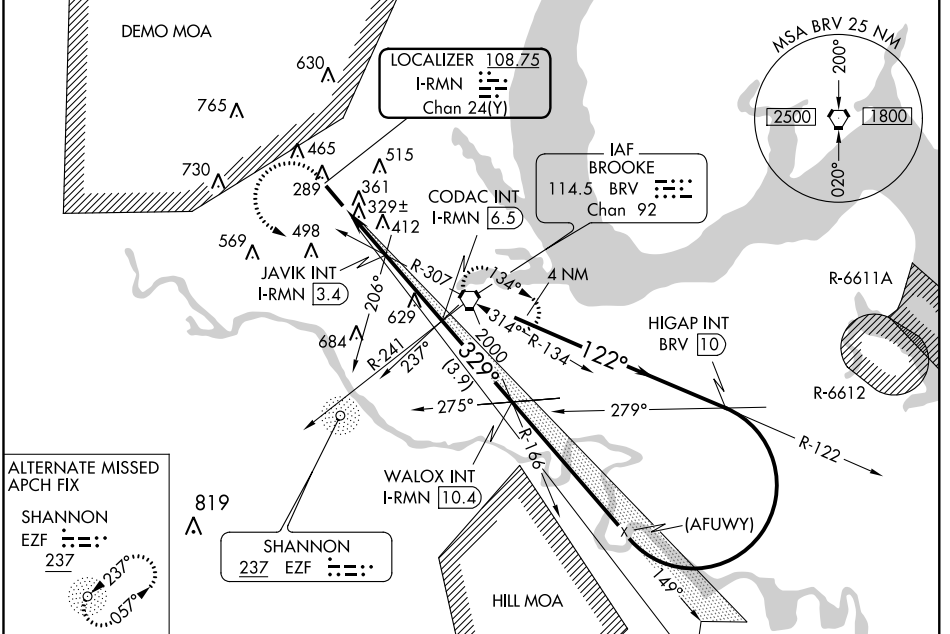
LOC/DME I-RMN	APP CRS	Rwy Idg	5000
<b>108.75</b>	<b>329°</b>	TDZE	196
Chan 24 (Y)		Apt Elev	212

# ILS or LOC RWY 33

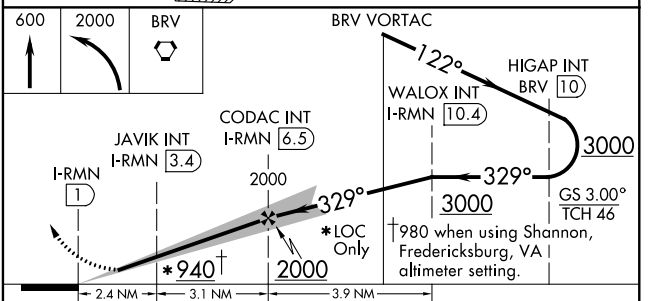
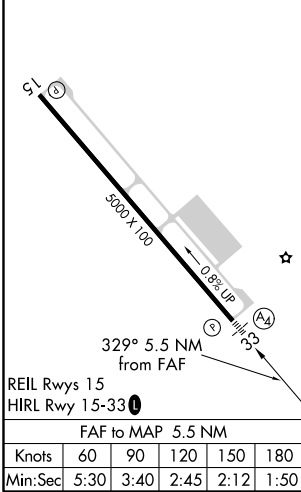
STAFFORD RGNL (RMN)

<p><b>▽</b> If local altimeter setting not received, use Shannon, Fredericksburg, VA altimeter setting and increase all DH/MDAs 40 feet.</p> <p><b>△NA</b> Inoperative table does not apply to S-ILS 33 and to S-LOC Cats B and C. DME or ADF required.</p>	<p>MALS</p>	<p>MISSED APPROACH: Climb to 600 then climbing left turn to 2000 direct BRV VORTAC and hold.</p>
---	-------------	--

AWOS-3 <b>126.325</b>	POTOMAC APP CON <b>128.525 306.925</b>	GCO <b>135.075</b>	UNICOM <b>122.725 (CTAF) 0</b>
--------------------------	---	-----------------------	-----------------------------------



ELEV 212	TDZE 196
----------	----------



	2.4 NM	3.1 NM	3.9 NM	
CATEGORY	A	B	C	D
S-ILS 33		396- <sup>3</sup> / <sub>4</sub>	200 (200- <sup>3</sup> / <sub>4</sub> )	
S-LOC 33		580- <sup>3</sup> / <sub>4</sub>	384 (400- <sup>3</sup> / <sub>4</sub> )	580-1 <sup>1</sup> / <sub>4</sub> 384 (400-1 <sup>1</sup> / <sub>4</sub> )
CIRCLING	720-1 508 (600-1)	740-1 528 (600-1)	840-1 <sup>3</sup> / <sub>4</sub> 628 (700-1 <sup>3</sup> / <sub>4</sub> )	860-2 648 (700-2)

NE-3, 14 SEP 2017 to 12 OCT 2017

NE-3, 14 SEP 2017 to 12 OCT 2017

WAAS CH <b>81805</b> <b>W33A</b>	APP CRS <b>329°</b>	Rwy Idg TDZE Apt Elev	<b>5000</b> <b>196</b> <b>212</b>
--	------------------------	-----------------------------	---

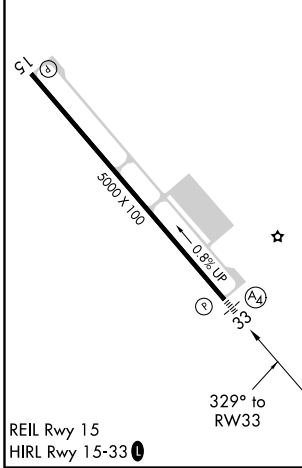
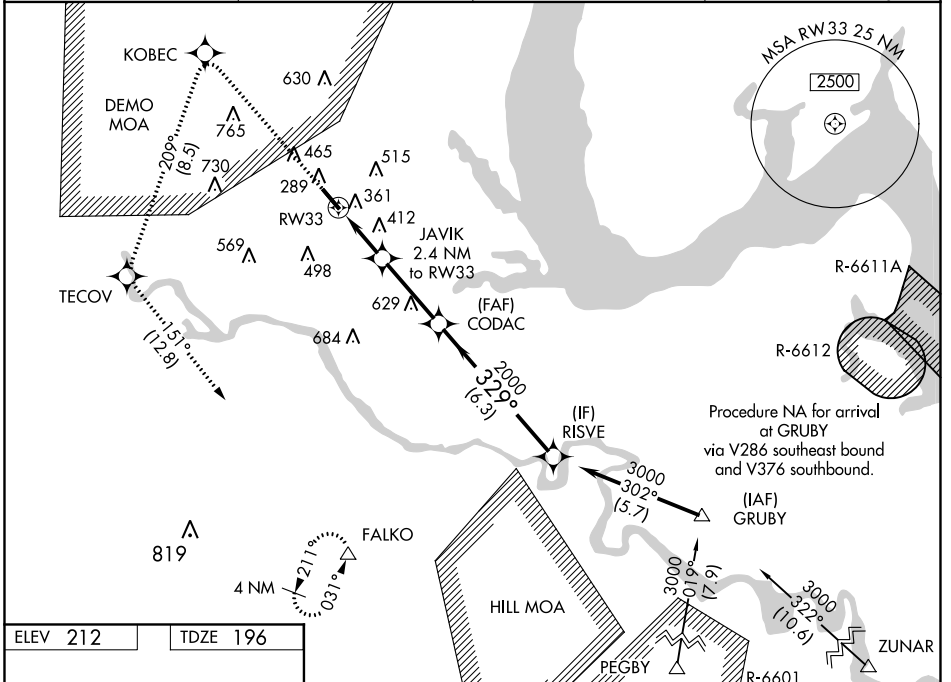
# RNAV (GPS) RWY 33

STAFFORD RGNL (RMN)

**NA** If local altimeter setting not received, use Shannon, Fredericksburg, VA altimeter setting and increase all DAs/MDAs 40 feet. Baro/VNAV NA below -15°C (5°F). VDP and Baro-VNAV NA when using Shannon, Fredericksburg, VA altimeter setting. Inoperative table does not apply to LNAV Cat C. DME/DME RNP-0.3 NA.

**MALS** MISSED APPROACH: Climb to 4000 direct KOBEC and left turn via 209° track to TECOV and left turn via 151° track to FALCO and hold.

AWOS-3 <b>126.325</b>	POTOMAC APP CON <b>128.525 306.925</b>	GCO <b>135.075</b>	UNICOM <b>122.725 (CTAF)</b>
--------------------------	---	-----------------------	---------------------------------



4000	KOBEC	TECOV	FALCO	RISVE
↑	209° TRK	151° TRK		
	JAVIK 2.4 NM to RW33	CODAC	3000	Procedure Turn NA
	* 1.5 NM to RW33	* 980	2000	GP 3.00° TCH 46
	1.5 NM	0.9	3.1 NM	6.3 NM
CATEGORY	A	B	C	D
LPV DA	450-¾	254 (300-¾)		450-1 254 (300-1)
LNAV/ VNAV DA	460-¾	264 (300-¾)		460-1 264 (300-1)
LNAV MDA	700-¾	504 (500-¾)	700-1½	504 (500-1½)
CIRCLING	720-1 508 (600-1)	740-1 528 (600-1)	840-1¾ 628 (700-1¾)	880-2 668 (700-2)

NE-3, 14 SEP 2017 to 12 OCT 2017

NE-3, 14 SEP 2017 to 12 OCT 2017

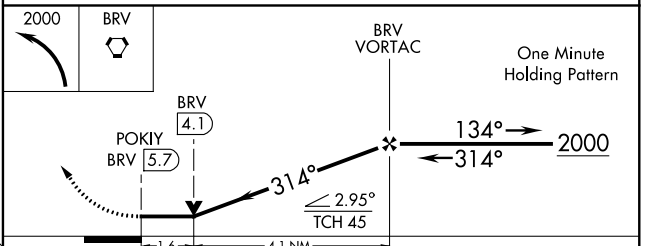
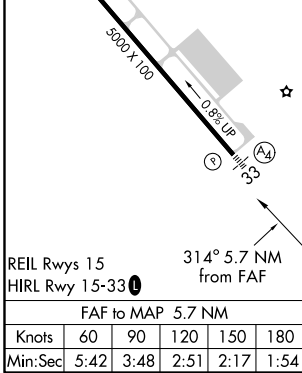
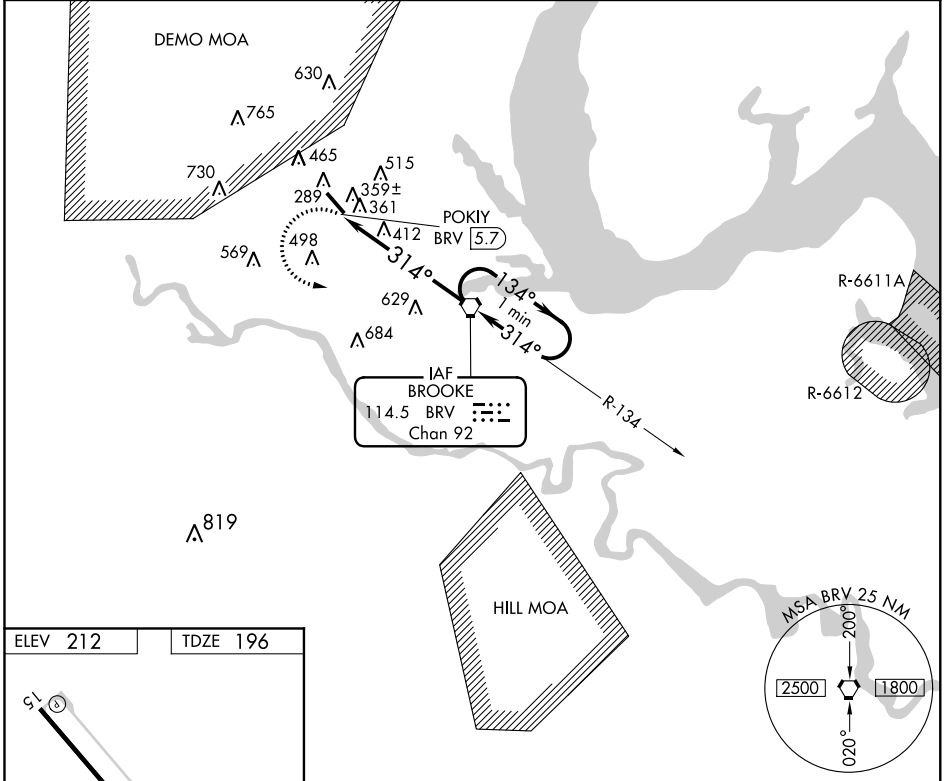
VORTAC BRV <b>114.5</b> Chan <b>92</b>	APP CRS <b>314°</b>	Rwy Idg TDZE Apt Elev	<b>5000</b> <b>196</b> <b>212</b>
--	------------------------	-----------------------------	---

**VOR RWY 33**  
STAFFORD RGNL (RMN)

▼ If local altimeter setting not received, use Shannon, Fredericksburg, VA altimeter setting and increase all MDAs 40 feet. VDP NA with Shannon, Fredericksburg, VA altimeter setting. Inoperative table does not apply to Cat C.

MALS  $(A_4) \equiv$  MISSED APPROACH: Climbing left turn to 2000 direct BRV VORTAC and hold.

AWOS-3 <b>126.325</b>	POTOMAC APP CON <b>128.525 306.925</b>	GCO <b>135.075</b>	UNICOM <b>122.725 (CTAF) 0</b>
--------------------------	---	-----------------------	-----------------------------------



CATEGORY	A	B	C	D
S-33	740-¾ 544 (600-¾)		740-1½ 544 (600-1½)	740-1¾ 544 (600-1¾)
CIRCLING	740-1 528 (600-1)		840-1¾ 628 (700-1¾)	860-2 648 (700-2)

NE-3, 14 SEP 2017 to 12 OCT 2017

NE-3, 14 SEP 2017 to 12 OCT 2017